



# morton.

**SYDNEY** 3010/70 Market Street

 2  2  1

A blue ribbon executive offering set high above the renowned 'Swissotel', this exceptional apartment defines a lifestyle of rare exclusivity and unquestionable convenience. Bathed in afternoon light, stunning views stretch across the Queen Victoria Building to the distant peaks of the Blue Mountains.

- A stunning investment with a high potential yield
- Immaculately finished for ultra contemporary living
- Spacious master bedroom has ensuite and built-ins
- Deluxe kitchen, granite benches, gas appliances
- 5 star facilities include the option for room service and housekeeping
- In-house day spa, health club, concierge and gym
- Outdoor heated pool, spa, storeroom, sun deck
- Special privileges to park one car in valet parking

### View

As advertised or by appointment

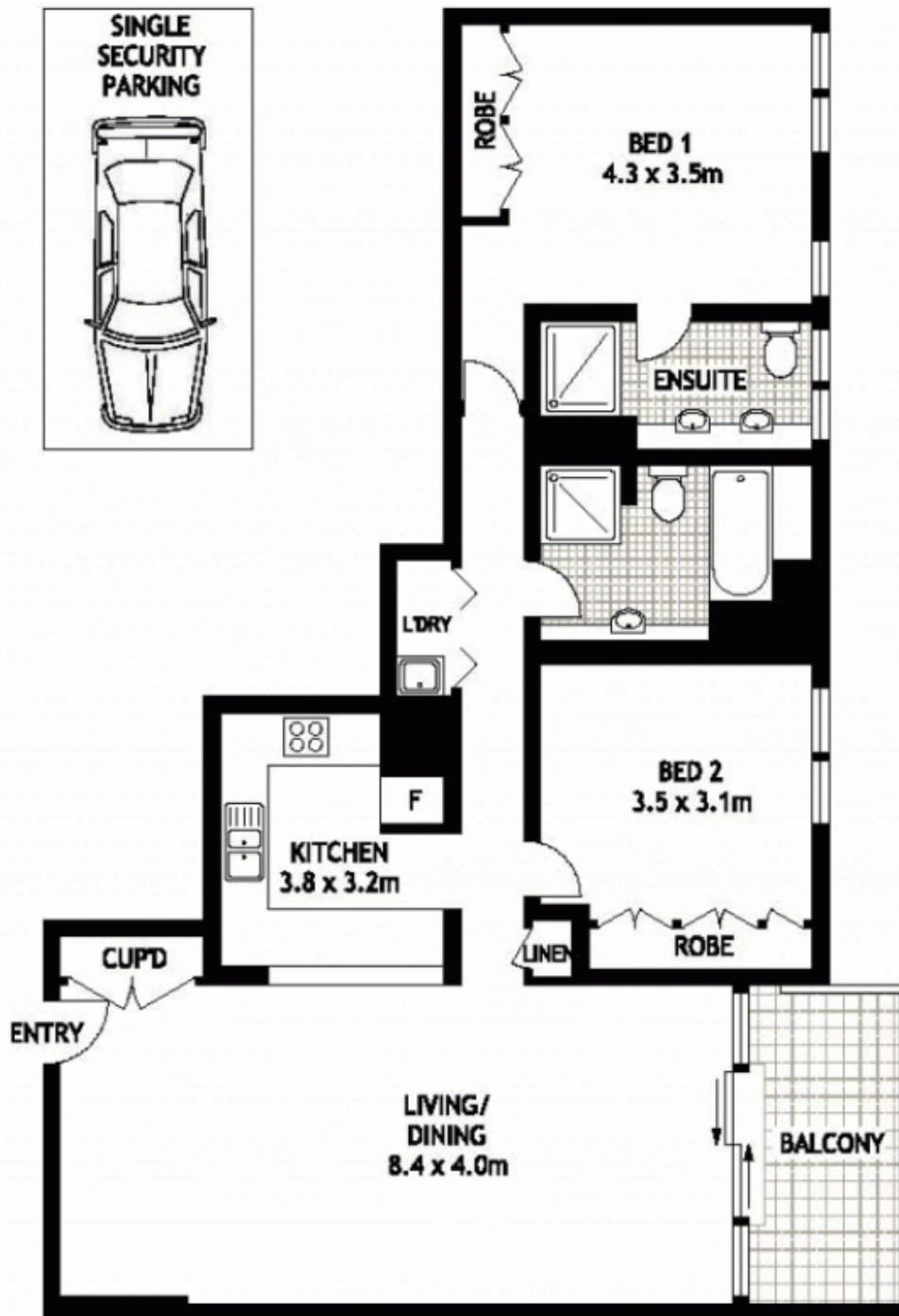
### Agent

**Ettiene West**

 0410 593 749

 [ettiene@morton.com.au](mailto:ettiene@morton.com.au)

[morton.com.au](http://morton.com.au)



**THIRTIETH FLOOR**



**3010/70 MARKET STREET**

**SYDNEY**

SCAPE Floor Planing Disclaimer: This floor plan is conceptual only. It is provided for illustrative purposes only and should not be relied upon. We make no guarantees to the correctness of this plan. All interested parties should make and rely on their own enquiries in determining the accuracy of the information contained in this floor plan.