



# morton.

**DAWES POINT** 16 Pottinger Street

 3  3  2

Located in heart of Walsh Bay, this outstanding 341sqm three bedroom residence offers a unique lifestyle blending the best attributes of CBD apartment living with the conventional layout of a family terrace house.

Arranged over three levels plus basement parking and private lift, the open and spacious design beautifully balances the sophistication of a modern designer lifestyle with the functional practicalities of family living.

The ground floor of this tightly held property features a large open plan lounge/dining room with high ceilings and access to a front patio with Harbour Bridge glimpses. A generous family kitchen with breakfast area is positioned to the rear of the ground level which opens to a fantastic private entertainers courtyard. The top floor comprises an expansive master suite offering some harbour views and features a unique roof top courtyard, ensuite & walk in wardrobe.

[morton.com.au](http://morton.com.au)

### View

As advertised or by appointment

### Agent

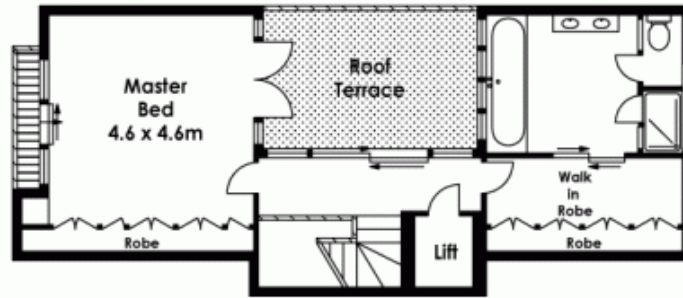
**Ettiene West**

 0410 593 749

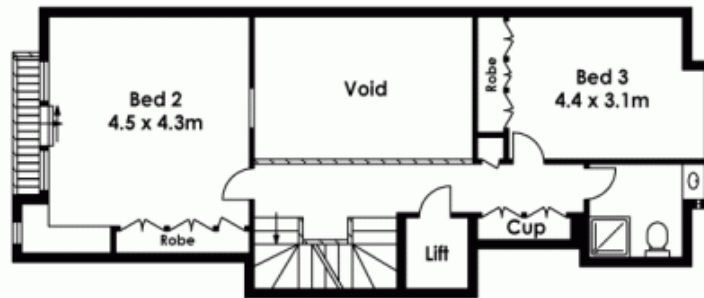
 [ettiene@morton.com.au](mailto:ettiene@morton.com.au)



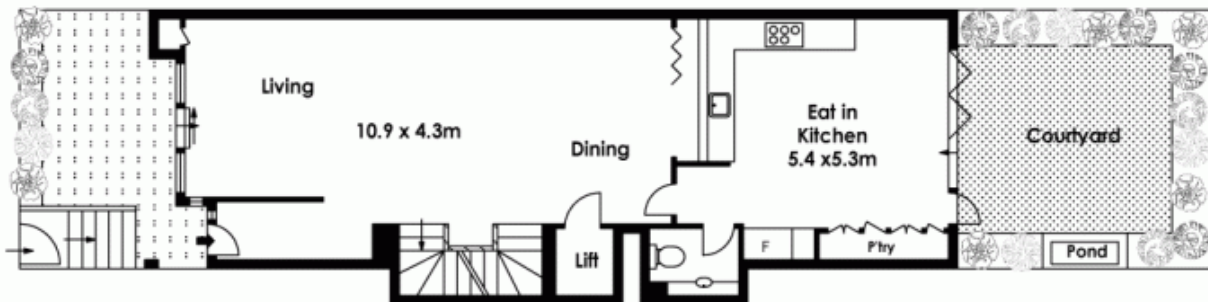
# 16 Pottinger Street, Walsh Bay



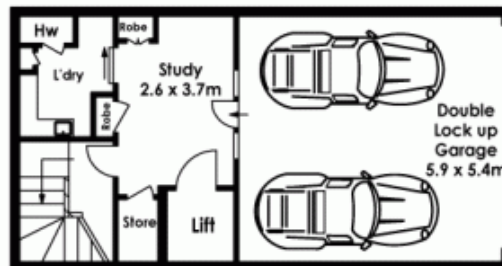
Level Two



Level One



Ground Level



Lower Ground Level



The information above is provided in good faith and has been provide to us from a variety of sources. We have not verified whe accurate and do not have any belief one way or other in its accuracy. We do not accept any responsibility to any person for it pass it on. All interested parties should rely on their own inquiries in order to determine whether or not this information is

Floor Plan by [www.squaremeter.com.au](http://www.squaremeter.com.au)