



morton.

SYDNEY 16/2 Phillip Street

 1  1  1

This magnificent jewel radiates sophistication, and offers the height of elegance and refinement. From its wide entrance hall, be enticed by the spectacular panoramic view of the world famous Sydney Harbour. Bright, spacious 126sqm living, accommodates a wrap around balcony making this the most spectacular one bedroom apartment in Sydney.

- Beautifully appointed kitchen, with separate convection cook top, sensor lighting
- Magnificent views of Sydney Harbour
- Lounge/Dining area leading to balcony overlooking the harbour
- Master bedroom with walk in robe, separate balcony access
- Main/ensuite tiled bathroom with huge shower and twin basins, heated towel rail
- Level 16, one of only three apartments on this floor
- Ample storage, laundry facility
- Wide entrance hall, 2.6m high ceilings
- Car space plus two storage cages
- Secure building with concierge

morton.com.au

View

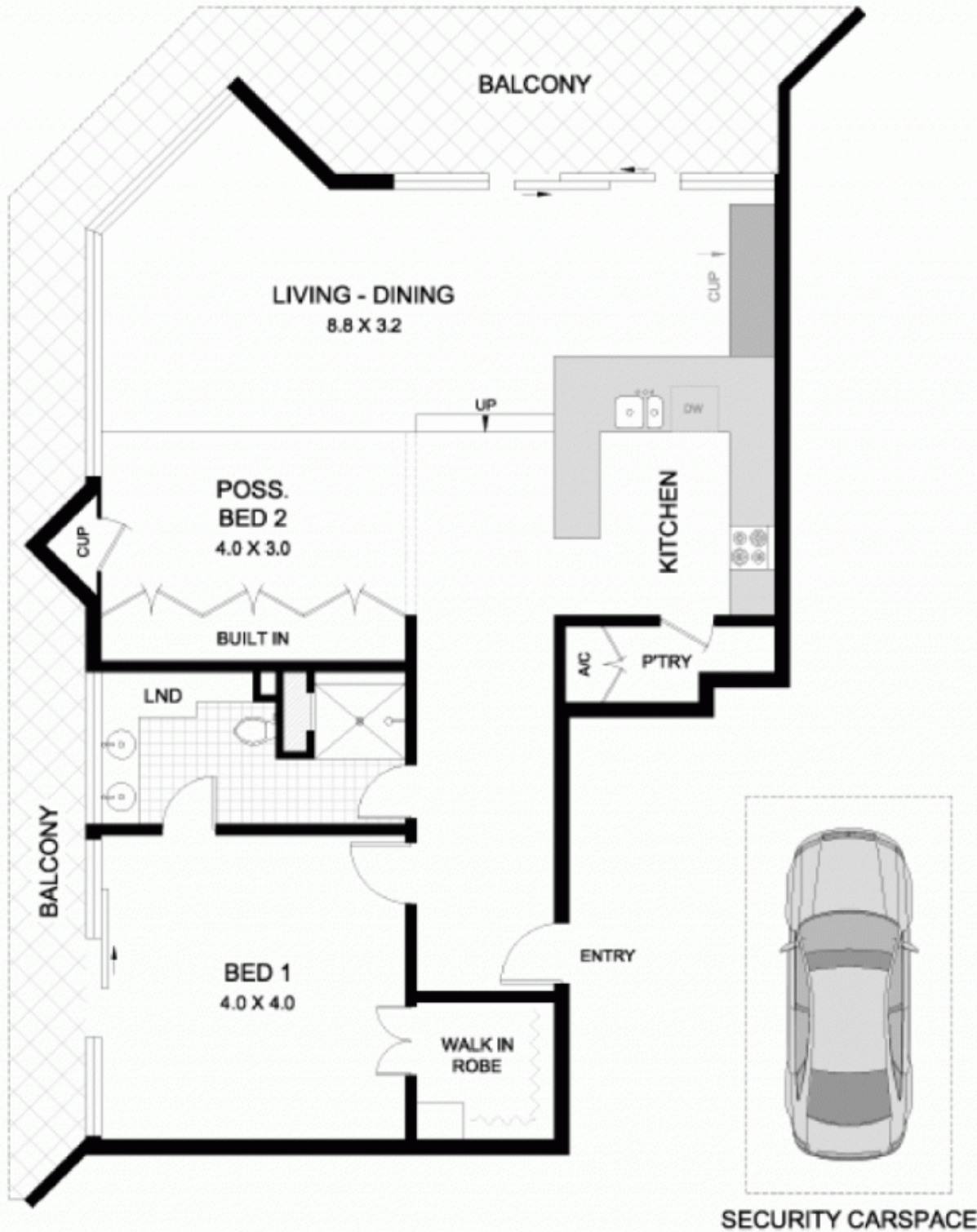
As advertised or by appointment

Agent

Ettiene West

 0410 593 749

 ettiene@morton.com.au



All information contained herein is gathered from sources we believe to be reliable. However, we cannot guarantee its accuracy and interested persons should rely on their own enquiries. Dimensions are approximate.

**THE QUAY, 2 PHILLIP STREET
SYDNEY**