



morton.

SYDNEY 1402/2 Bond Street

 3  2  1

Sitting proud on the north easterly corner of the 14th floor of the highly sought after 'Mantra', is this superb three bedroom apartment. Offering an abundance of space and bathed in natural light this is an impeccable showcase for premium city living. This property combines convenience and luxury to create an exceptional standard of living.

- Spacious open plan living/dining area, opens to terrace
- Entertainers' terrace with retractable awning
- Three excellent sized bedrooms with large built-in robes
- Master bedroom with ensuite and two Juliette balconies
- Deluxe granite kitchen with Smeg appliances and generous storage
- Main marble bathroom with corner bath tub
- Integrated laundry, ducted split air-conditioning
- The rental market value has been appraised at \$1500 furnished per week approx
- Secure underground parking for one car
- Secure key access, 24 hour concierge
- Rooftop gym, pool, spa and BBQ areas with harbour

View

As advertised or by appointment

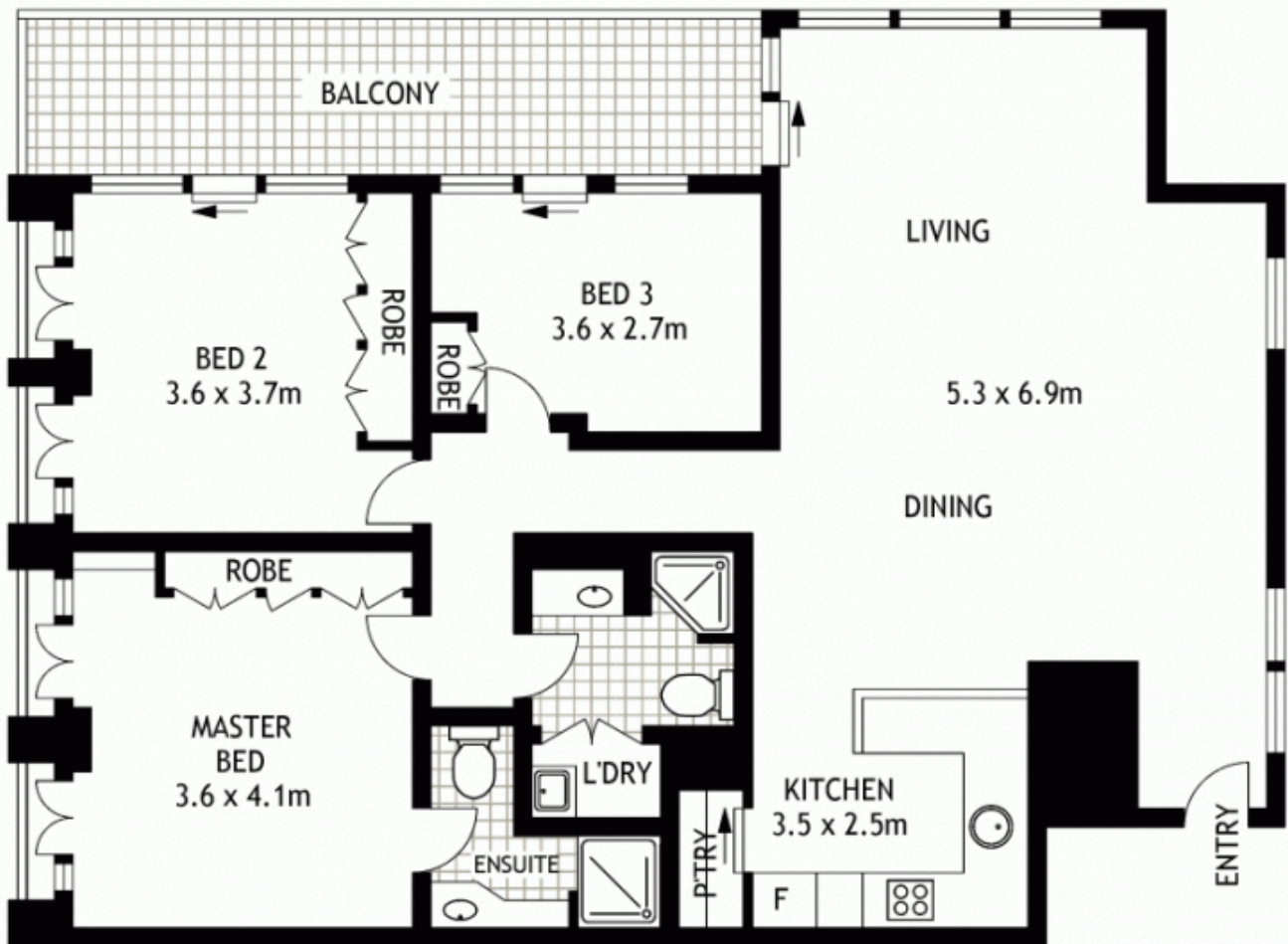
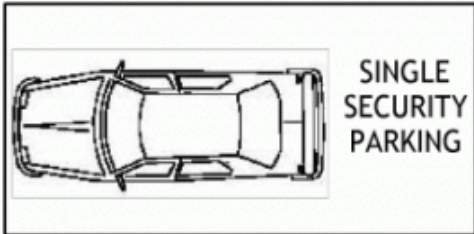
Agent

Ettiene West

 0410 593 749

 ettiene@morton.com.au

morton.com.au



FOURTEENTH FLOOR

1402/2 BOND STREET

SYDNEY

SCAPE Floor Planing Disclaimer: This floor plan is conceptual only. It is provided for illustrative purposes only and should not be relied upon. We make no guarantees to the correctness of this plan. All interested parties should make and rely on their own enquiries in determining the accuracy of the information contained in this floor plan.