



morton.

MILLERS POINT 901/1 Pottinger Street

 3  2  2

Submerge yourself in the beauty of Sydney from this stunning three bedroom penthouse. With its slick design and generous interiors this 376sqm entertainers' dream with its huge terrace is the pinnacle of luxurious living. Situated on the desirable north easterly corner, drenched with sun light, absorb the magnificent views of Sydney Harbour Bridge and glistening waters.

- Magnificent tiled living area with fireplace
- Living surrounded in floor-to-ceiling glass
- Dining area with sliding doors to separate family room
- Family room with balcony access
- Huge wrap around entertainers' terrace
- Terrace on the favoured north easterly corner
- Granite gas kitchen, Miele appliances
- Five burner cook top, ample cupboard space
- Impeccable, uninterrupted views of Sydney Harbour Bridge
- King sized master bedroom with masses of wardrobe space
- Master bedroom overlooking the water
- Spacious second bedroom with walk-in robe and balcony

morton.com.au

View

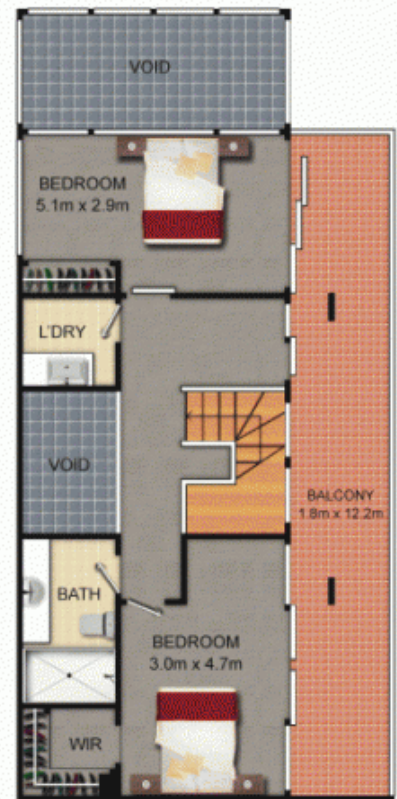
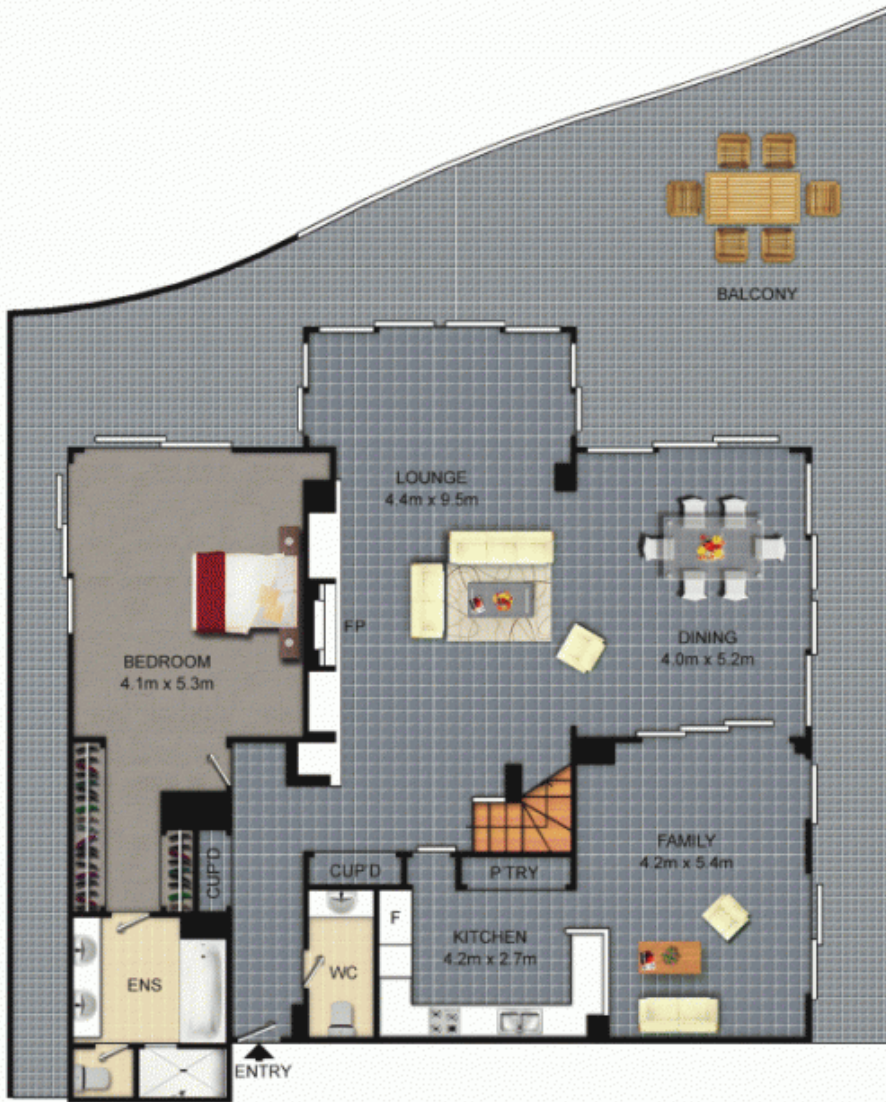
As advertised or by appointment

Agent

Ettiene West

 0410 593 749

 ettiene@morton.com.au



Scale shown in metres. All dimensions herein are approximate and gathered from sources believed to be reliable. Whilst every effort is made for the accuracy of our floor plans, interested parties should rely on their own enquires. Floor Plans by Industrie Media. www.industriemedia.com.au

