



morton.

DARLINGHURST 601/227 Victoria Street

 2  2  1

This spacious 123sqm dual level 2 bedroom apartment is located on the 6th floor of the iconic Top Of The Town.

Displaying a contemporary interior, the apartment comprises a large balcony of the living room, modern commercial style stainless steel kitchen, and a large master bedroom with built in wardrobes. The apartment includes two bathrooms located upstairs with a separate toilet/laundry downstairs. Additionally, the property features ducted air conditioning and a single secure car space. Top Of The Town has a 24 hour concierge, pool, sauna and gym.

This apartment is close to schools, shops and transport, and offers some of the most exciting cafes, restaurants and bars in the eastern suburbs, right at your doorstep. With only a 2 minute walk to Paddington and Oxford Streets famous shopping precinct, this property is perfect for anyone working in the city with just a 10 minute walk to the CBD through Hyde Park.

View

As advertised or by appointment

Agent

Sarah Fowell

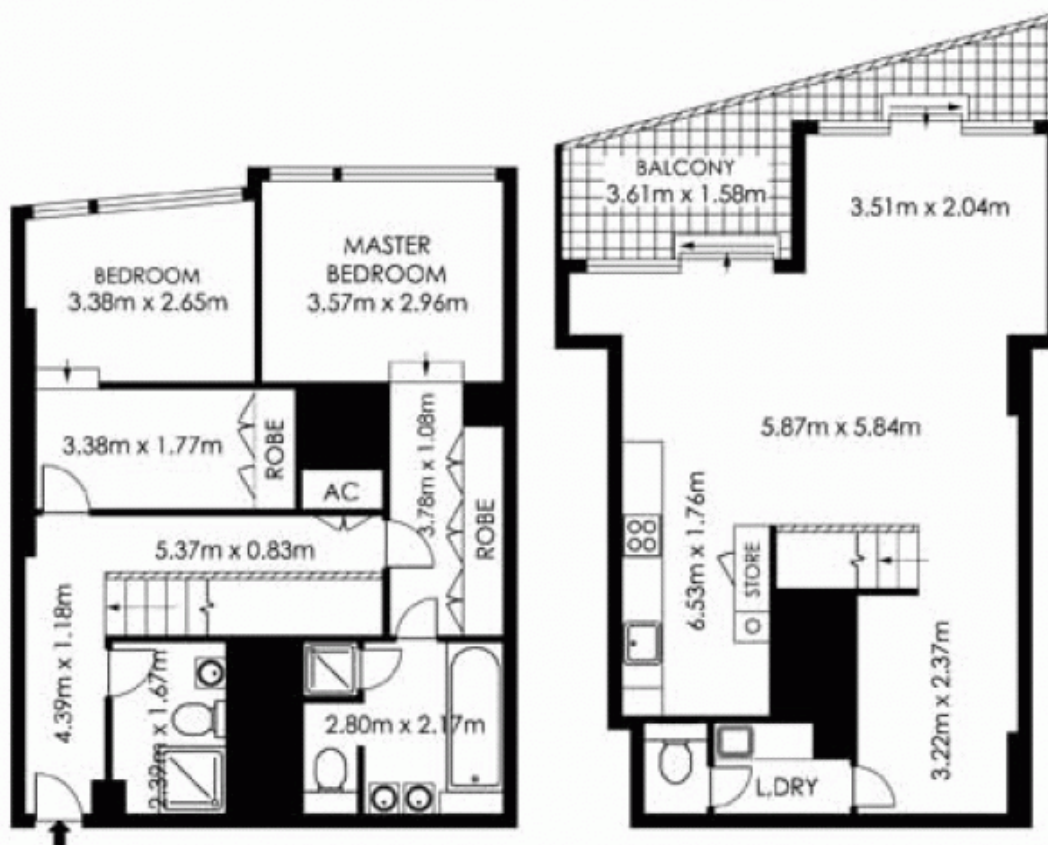


 sarah@morton.com.au

morton.com.au



601/227 Victoria Street, Darlinghurst



SINGLE CAR SPACE



STORAGE

The information above is provided in good faith and has been provide to us from a variety of sources. We have not verified whe accurate and do not have any belief one way or other in its accuracy. We do not accept any responsibility to any person for it pass it on. All interested parties should rely on their own inquiries in order to determine whether or not this information is

Floor Plan by www.squaremeter.com.au