



morton.

LITTLE BAY 8 Darwin Avenue

🛏 5 🚿 1 🚗 2

Set amidst the immaculately manicured gardens and peaceful coastal atmosphere of 'Prince Henry at Little Bay' is this rare opportunity to possess a piece of history. Known as 'Hill Theatre Building No 2' and built in the mid 1930s, this unique Art Deco building is zoned residential 2D.

- Classified as having exceptional heritage significance
- Originally was one of the hospital's operating theatres
- Complete structure is approximately 530sqm internally
- Current DA plans allow for creation of two apartments
- Three bed apartment is approximately 180sqm internally
- Two bed apartment is approximately 140sqm internally
- Huge common areas, private deck, storerooms, cellar
- Potential attic/3rd apt with approved DA modification
- Possible reconfiguration as a grand family residence
- Ducted air conditioning, alarm and parking spaces

View

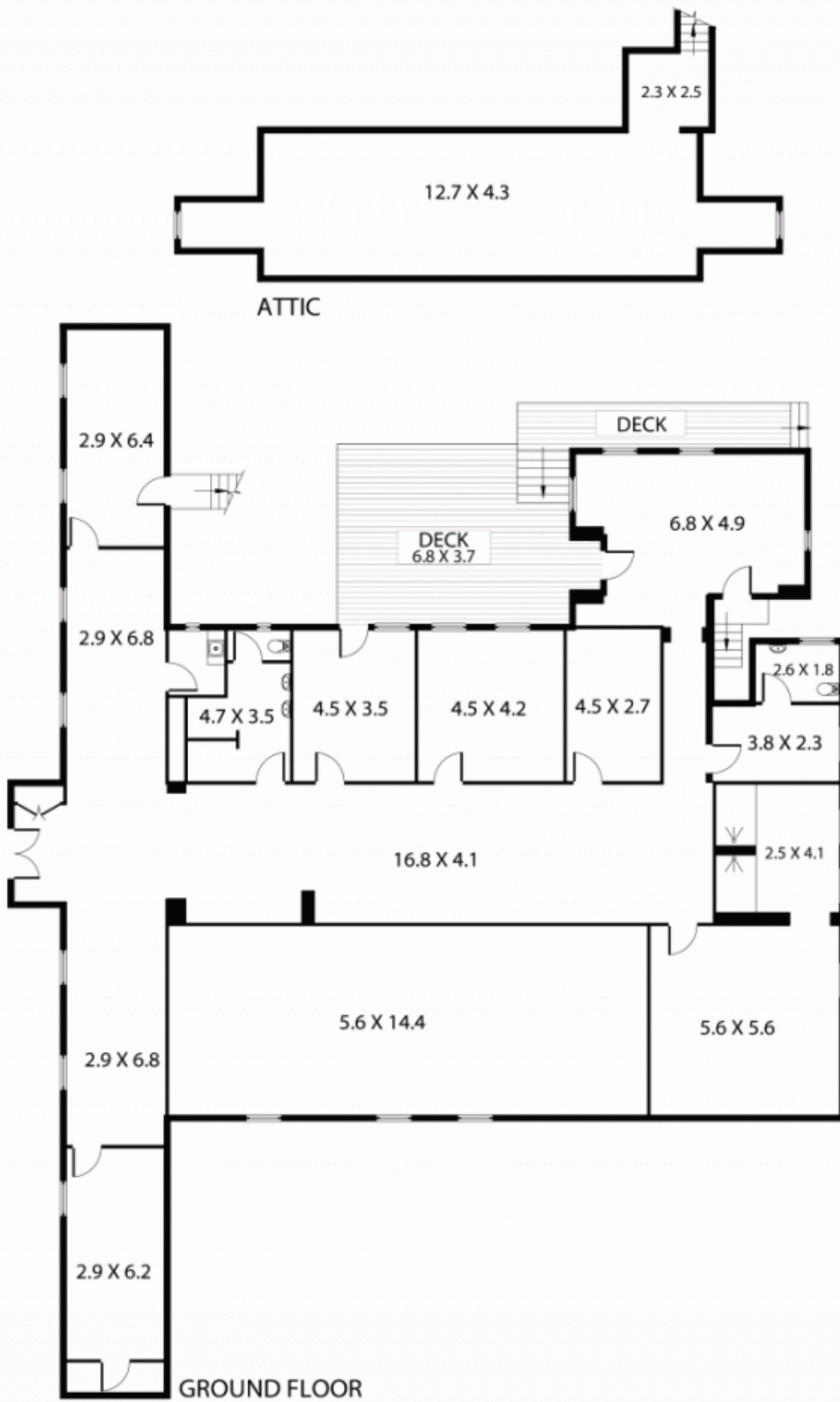
As advertised or by appointment

Agent

Morton RE

📞 info@morton.com.au

morton.com.au



0 1 2 3 4 5



Plans shown are for presentation purposes only and are not part of any legal document or title. They are subject to errors, omissions, inaccuracies and should not be used as a sole and accurate reference. Interested parties should make their own inquiries using independent sources.