



morton.

SURRY HILLS 808/1 Poplar Street

 2  2  1

Set in this enviable location in one of Sydney's trendiest suburbs Surry Hills; this fabulous split level top floor apartment is on the door step to the City and Hyde Park and would make an ideal first step into the Sydney property market.

The apartment is situated on level 8, it measures 97 square metres and comprises living room with partial double height ceilings, offering space for living and dining areas, open plan kitchen as well as access to a useable 6 metre balcony. The two bedrooms are upstairs, master bedroom with built-ins and en-suite and second bathroom.

Additional features include intercom access, one secure parking space plus storage and access to communal gym and sauna.

The apartment is within walking distance to Hyde Park, CBD and Oxford Street plus it is conveniently located to all major transport links, Sydney's galleries, museums, theatres, shops, bars and restaurants that Sydney has to offer.

morton.com.au

View

As advertised or by appointment

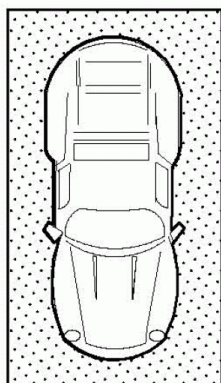
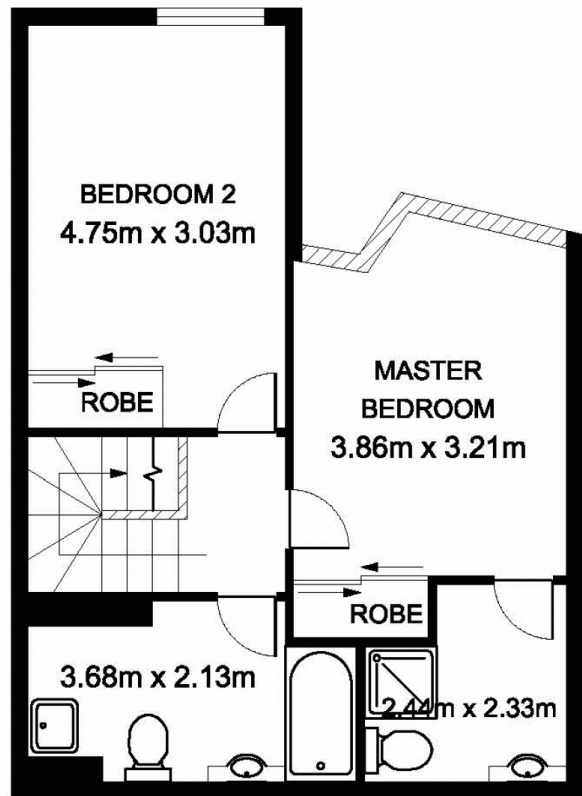
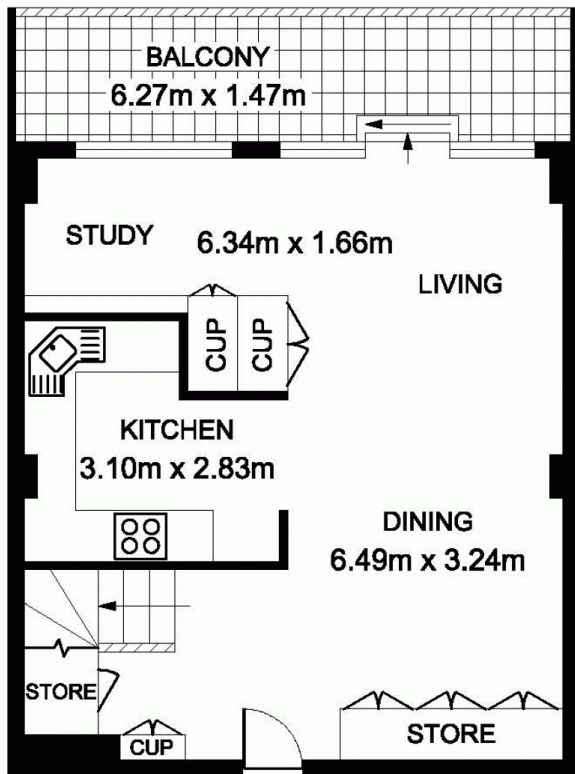
Agent

Ettiene West

 0410 593 749

 ettiene@morton.com.au

808/1 Poplar Street, Surry Hills



**SINGLE
CAR SPACE**

