



# morton.

**SYDNEY** 702/35 Shelley Street

 2  2  1

Situated in a highly desirable position with views from all rooms, this stylish designer apartment has lavishly appointed interiors and breathtaking views over Darling Harbour. Located right in the heart of King Street Wharf, this property is surrounded by streets lined with world class restaurants and cafes, shopping and attractions.

- Open plan living area opens to balcony overlooking harbour
- Stylish marble kitchen, stainless benchtops, Gaggenau appliances
- Master bedroom with luxurious ensuite
- Second bedroom with built-in wardrobes
- Elegant marble bathrooms
- Separate study, internal laundry
- Secure car space, ample storage
- Air-conditioning, concierge, 24 hour security
- Heated pool, gymnasium, barbeque area, sauna
- Attractive investment or home
- Walk to the CBD, business centre, transport, bars and restaurants

[morton.com.au](http://morton.com.au)

### View

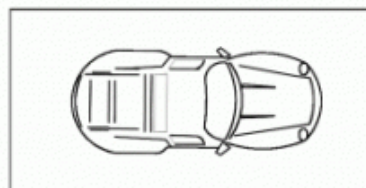
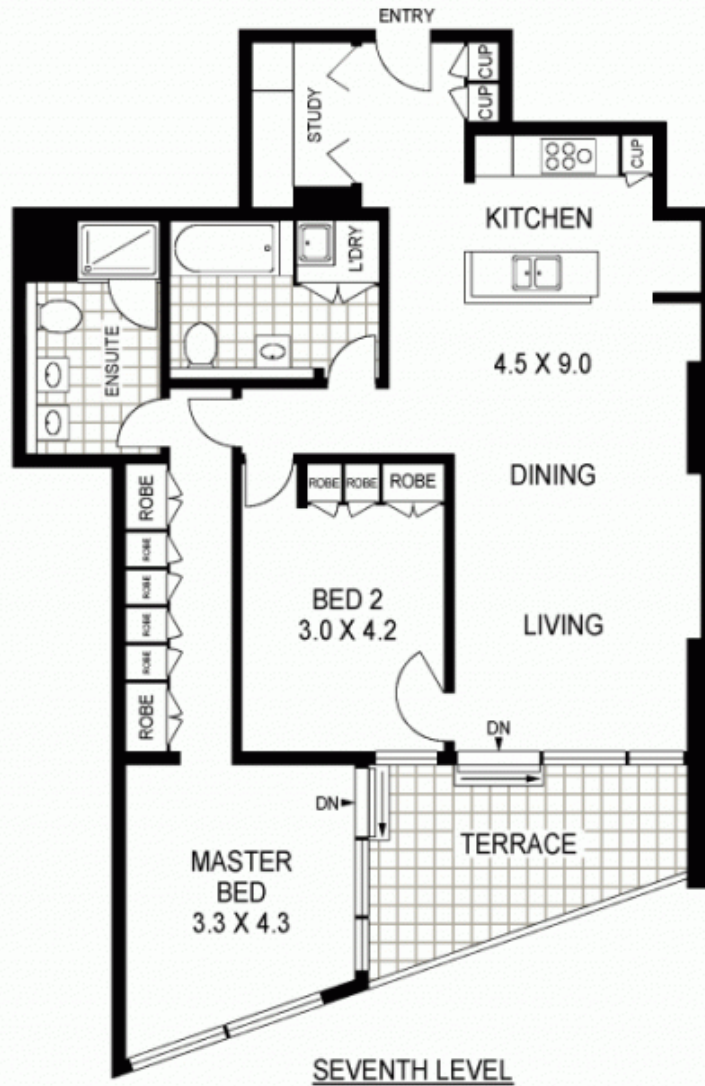
As advertised or by appointment

### Agent

**Ettiene West**

 0410 593 749

 [ettiene@morton.com.au](mailto:ettiene@morton.com.au)



GROUND LEVEL

NOTE :- ONE CAR SPACE  
AVAILABLE ON  
SECURITY PARKING

APPROX : GROSS INTERNAL AREA :- 94 SQM



**702/35 SHELLEY STREET**

**SYDNEY**

**Floor Plan Disclaimer:** Mind the Gap (mtg) floor plans / site plans are intended as a guide only. No representations or warranties of any nature whatsoever are given or intended and any person using this information should always rely on their own enquiries. mtg property marketing services - 1300 133 145 - photography, floor plans, virtual tours, video tours, copywriting, project marketing - [www.mindthegap.com.au](http://www.mindthegap.com.au)