



# morton.

**SYDNEY** S704/35 Shelley Street

 3  3  2

One of the best waterfront apartments on King Street Wharf, this stylish designer apartment provides lavishly appointed interiors and breathtaking views over Darling Harbour. Comprising of a large open plan living areas and floor to ceiling windows leading onto a 46sqm alfresco wrap around patio overlooking the enchanting harbour, this apartment is perfect for entertaining and enjoying the afternoon sun

- 199sqm harbour front living including 46sqm patio
- Sweeping harbour views from every room
- Impressive entrance hall with ample storage
- Two bedrooms with ensuites, third bedroom or study
- Three elegantly appointed marble bathrooms
- Immaculate stylish open plan kitchen, stainless steel appliances
- Internal laundry, air conditioning, timber flooring, electrical blinds
- Two secure car spaces, ample storage, intercom, and concierge
- Heated outdoor swimming pool, sauna, gymnasium and BBQ

### View

As advertised or by appointment

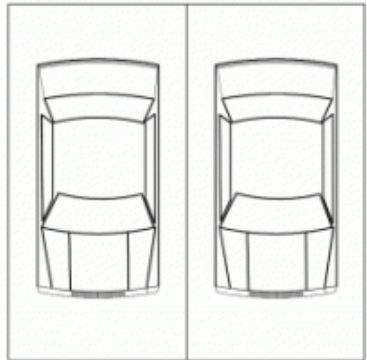
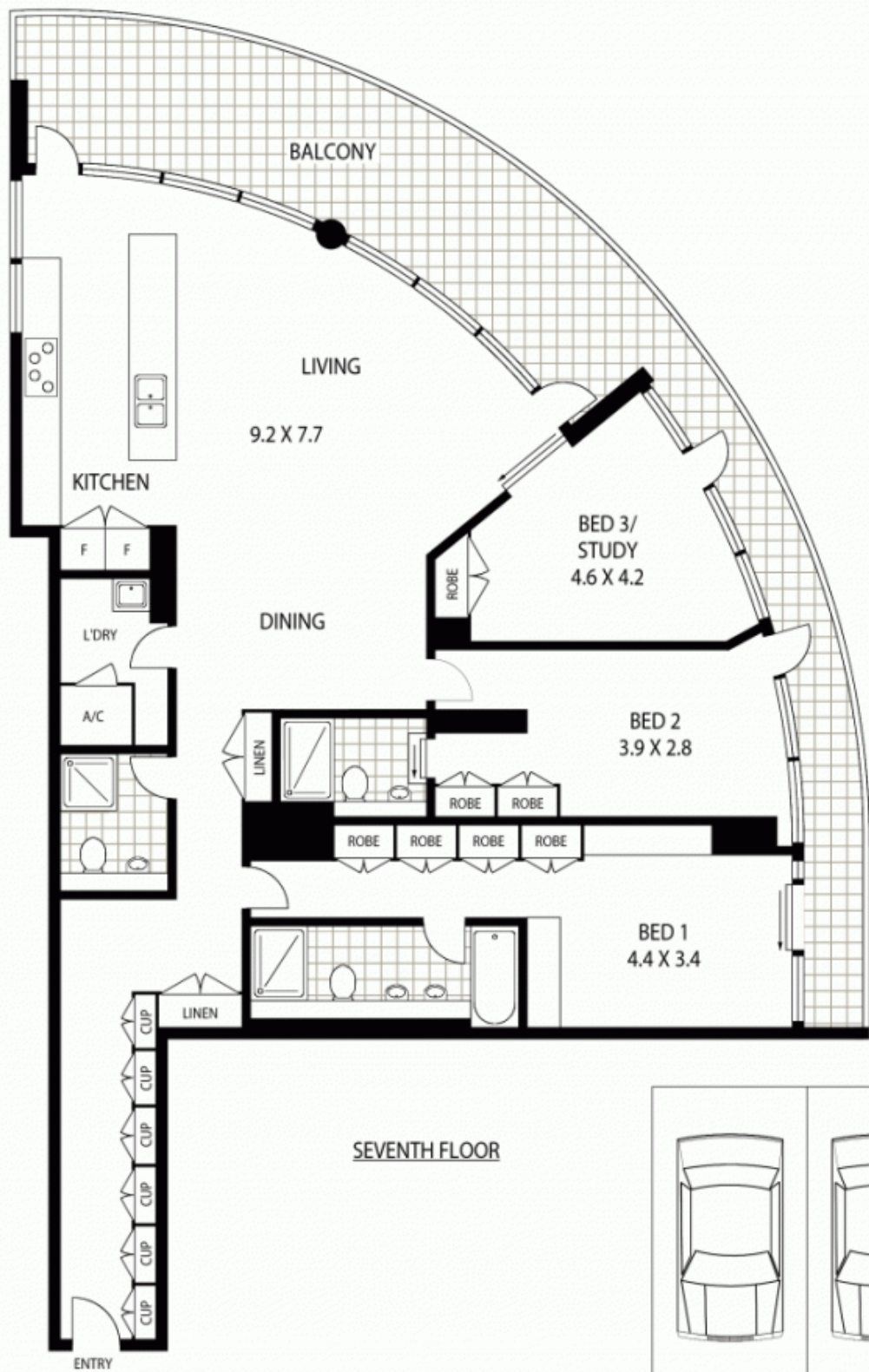
### Agent

**Ettiene West**

 0410 593 749

 [ettiene@morton.com.au](mailto:ettiene@morton.com.au)

[morton.com.au](http://morton.com.au)



NOTE :- DOUBLE SECURITY  
PARKING



704/35 SHELLEY STREET

SYDNEY

**SCAPE Floor Planning Disclaimer:** This floor plan is conceptual only. It is provided for illustrative purposes only and should not be relied upon. We make no guarantee as to the correctness of this plan. All interested parties should make and rely on their own enquiries in determining the accuracy of the information contained in this floor plan.