



morton.

SYDNEY 217/45-49 Shelley Street

 1  1  1

Located in chic King Street Wharf precinct this apartment is ideal for the professional on the run wanting to reside or invest in an urban location. Consisting of a very desirable floor plan with quality finishes and ample space, this property has an air of modernity and style.

- Bedroom with built-in cupboards
- Separate study area
- Open plan living/ dining area
- Modern kitchen
- Bathroom and internal laundry
- Study area
- Secure under cover car space
- Air conditioning, security building

View

As advertised or by appointment

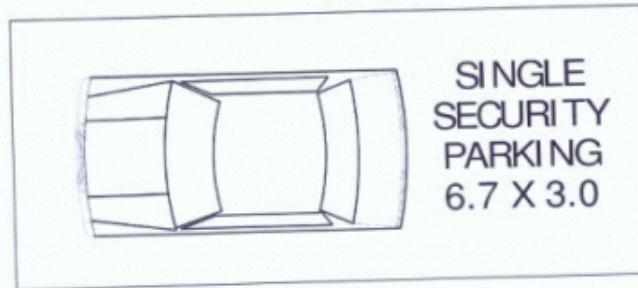
Agent

Ettiene West

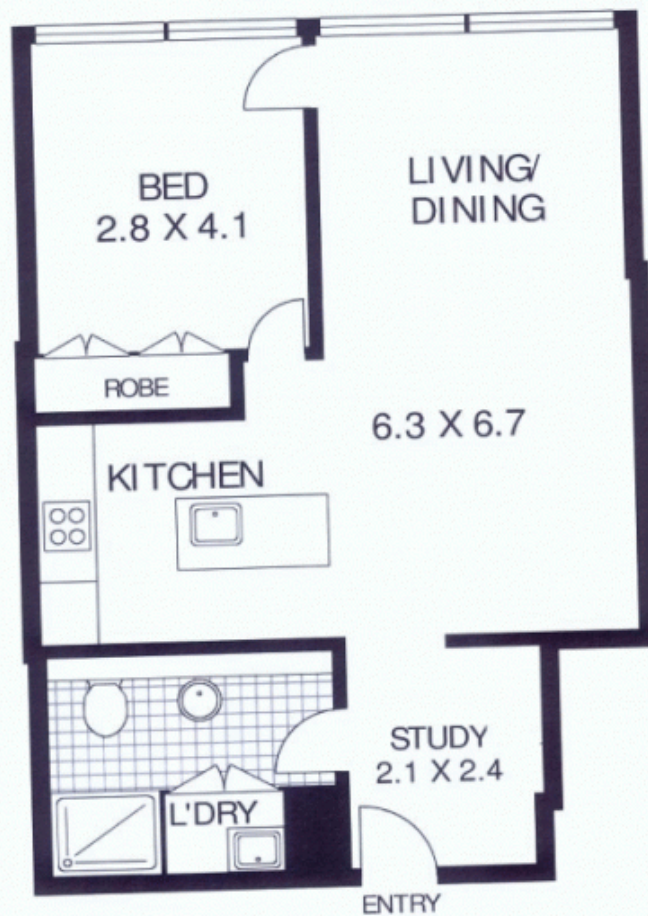
 0410 593 749

 ettiene@morton.com.au

morton.com.au



BASEMENT FLOOR



SECOND FLOOR



217/ 49 SHELLEY STREET

SYDNEY

SCAPE Floor Planning Disclaimer: This floor plan is conceptual only. It is provided for illustrative purposes only and should not be relied upon. We make no guarantee as to the correctness of this plan. All interested parties should make and rely on their own enquiries in determining the accuracy of the information contained in this floor plan.

Water Rates: \$142p/q approx
Council Rates: \$201p/q approx
Strata Rates: \$1369p/q approx

All information contained herein is gathered from sources we believe to be reliable, however we cannot guarantee its accuracy and interested persons should rely on their own enquiries.