



morton.

SURRY HILLS 725/20 Pelican Street

 1  1  1

Located in the prestigious architecturally designed Monument building, just moments to Oxford Street's cafes, shops and night spots, this contemporary 72sqm one bedroom plus study property is the ultimate inner-city pad.

- North facing entertainers' balcony
- Spectacular city and district views
- Open plan layout with floor to ceiling glass
- Gourmet kitchen with Miele appliances
- Large bedroom with built-ins and balcony access
- Study, internal laundry
- Security parking, air conditioning
- Concierge, video intercom, pool and gym
- Pet friendly

View

As advertised or by appointment

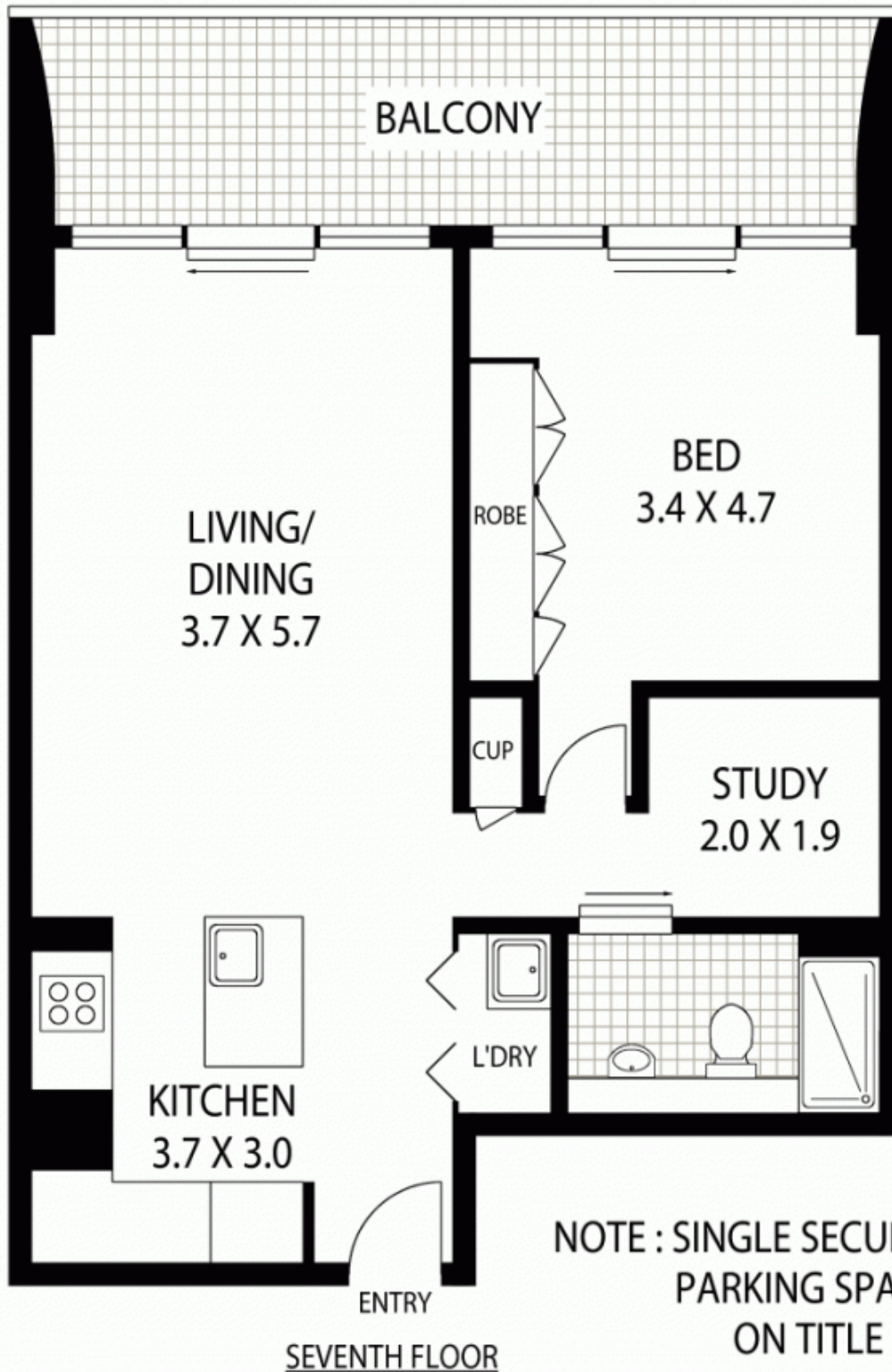
Agent

Ettiene West

 0410 593 749

 ettiene@morton.com.au

morton.com.au



725/20 PELICAN STREET

SURRY HILLS

SCAPE Floor Planning Disclaimer: This floor plan is conceptual only. It is provided for illustrative purposes only and should not be relied upon. We make no guarantee as to the correctness of this plan. All interested parties should make and rely on their own enquiries in determining the accuracy of the information contained in this floor plan.