



# morton.

**SURRY HILLS** 1111/20 Pelican Street

 1  1  1

This unique loft-style split level apartment, situated in the iconic Monument complex in Surry Hills, is the ultimate in urban living. The Monument characterises inner-city style with the CBD, Oxford Street, Central Station and transport all seconds from your door.

- Gourmet Caesar Stone kitchen with Miele appliances
- Modern bathroom with oversized shower recess
- Generous open plan lounge/dining opening to balcony
- Generous loft-style bedroom with built-ins
- North facing balcony with city and district views
- Internal laundry, ample storage and reverse cycle a/c
- Security building, concierge, AV intercom and storage cage
- Gymnasium, pool and landscaped gardens

### View

As advertised or by appointment

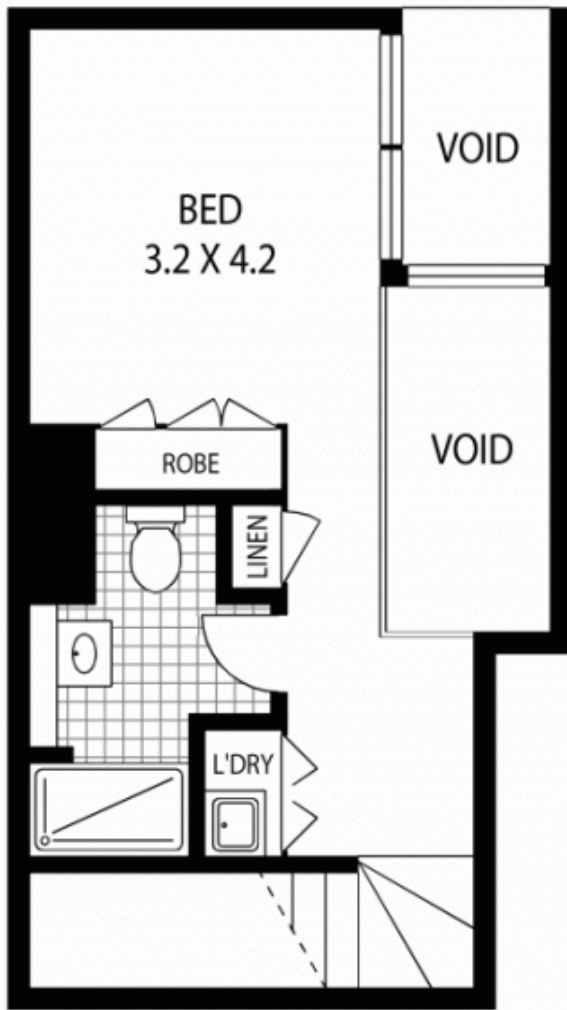
### Agent

**Ettiene West**

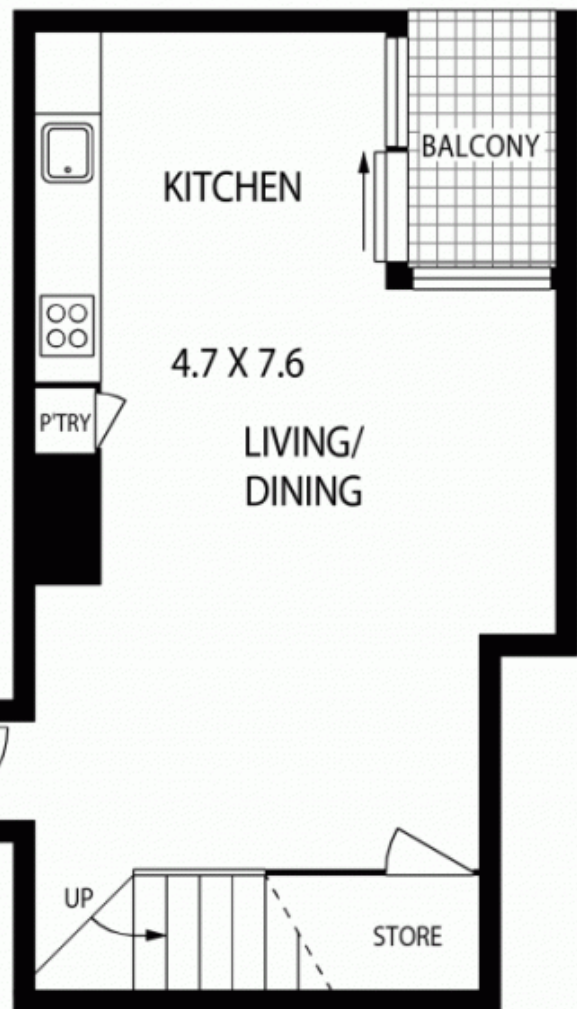
 0410 593 749

 [ettiene@morton.com.au](mailto:ettiene@morton.com.au)

[morton.com.au](http://morton.com.au)



TWELFTH FLOOR



ELEVENTH FLOOR

NOTE : TITLE INCLUDES SINGLE SECURITY PARKING AND 8 SQM STORAGE CAGE IN BASEMENT LEVEL.



1111/20 PELICAN STREET

SURRY HILLS

**SCAPE Floor Planning Disclaimer:** This floor plan is conceptual only. It is provided for illustrative purposes only and should not be relied upon. We make no guarantee as to the correctness of this plan. All interested parties should make and rely on their own enquiries in determining the accuracy of the information contained in this floor plan.