

morton.

SYDNEY 315/23 Shelley Street

 1  1

Situated on the third floor at King Street Wharf, this fantastic 63sqm apartment is the ultimate in modern city living. With uncompromised finishes throughout, plus access to all the five star building facilities, this property is perfect for the investor or first home buyer alike.

- Currently renting for \$525 per week
- Spacious, well designed floorplan with separate study
- East facing entertainers' balcony with floor to ceiling glass doors
- Generous queen sized bedroom with built-in robes
- Luxurious mosaic modern bathroom with internal laundry
- Stylish kitchen with island bench and gas Smeg appliances
- 24 hour security building with video intercom
- Concierge, outdoor heated pool, gym and sauna

View

As advertised or by appointment

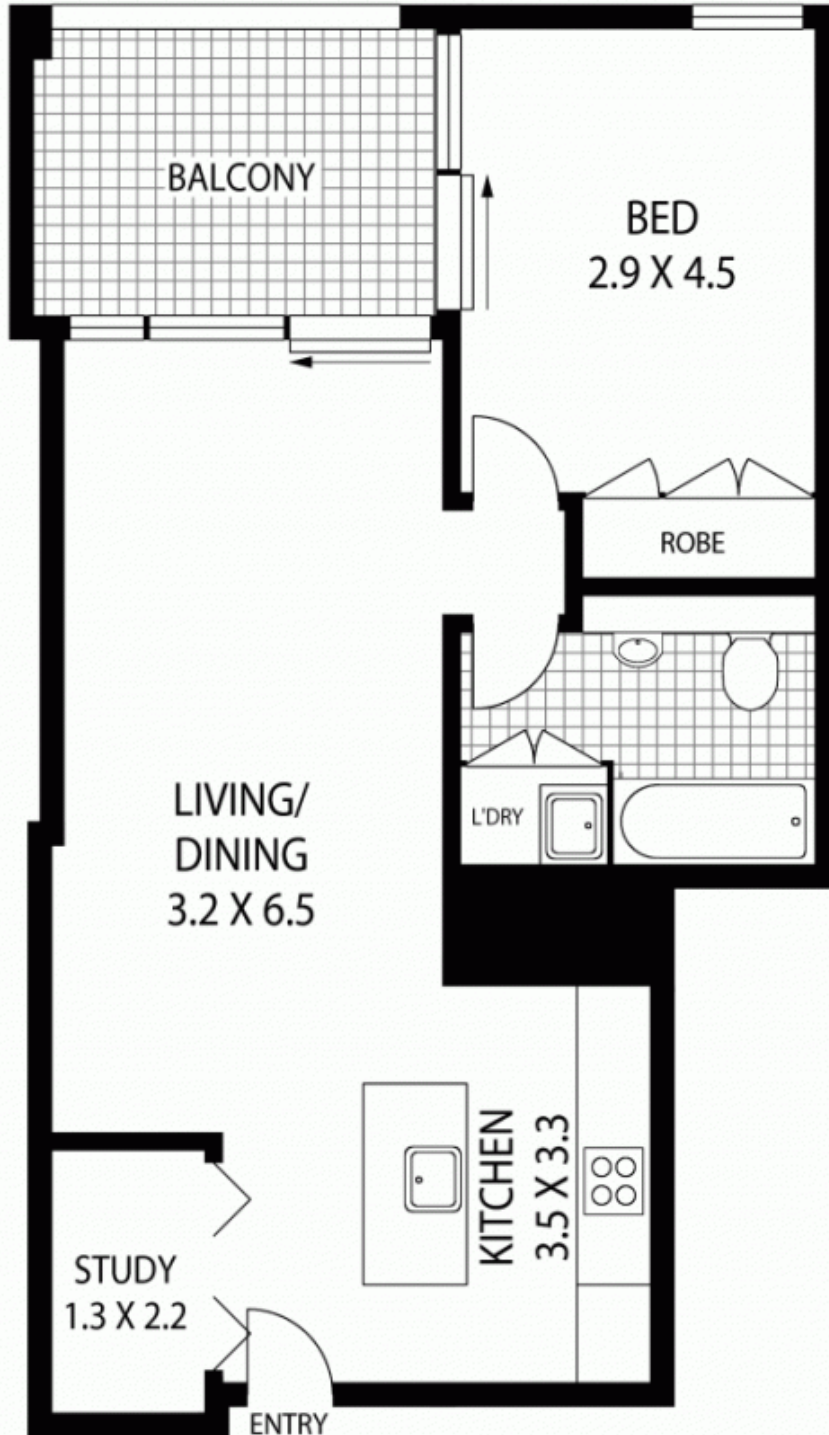
Agent

Ettiene West

 0410 593 749

 ettiene@morton.com.au

morton.com.au



THIRD FLOOR



315/23 SHELLEY STREET

SYDNEY

SCAPE Floor Planning Disclaimer: This floor plan is conceptual only. It is provided for illustrative purposes only and should not be relied upon. We make no guarantee as to the correctness of this plan. All interested parties should make and rely on their own enquiries in determining the accuracy of the information contained in this floor plan.