



# morton.

**SYDNEY** 1303/281 Elizabeth Street

 2  2  1

With sleek white interiors lit by easterly light, this immaculate two bedroom apartment with spectacular park and harbour views represents a wonderful opportunity for anyone seeking a city pad or investment property with guaranteed returns.

- Fluid floor plan with 100sqm of light filled flowing space
- Open plan living and dining opens to balcony
- Well appointed kitchen with stainless steel gas fittings
- Built-ins in all bedrooms, master with ensuite
- Ducted air con, parquet flooring, plantation shutters
- Internal laundry, secure undercover parking, storage
- Resort style pool, spa, gym, sauna, 24 hour concierge

#### View

As advertised or by appointment

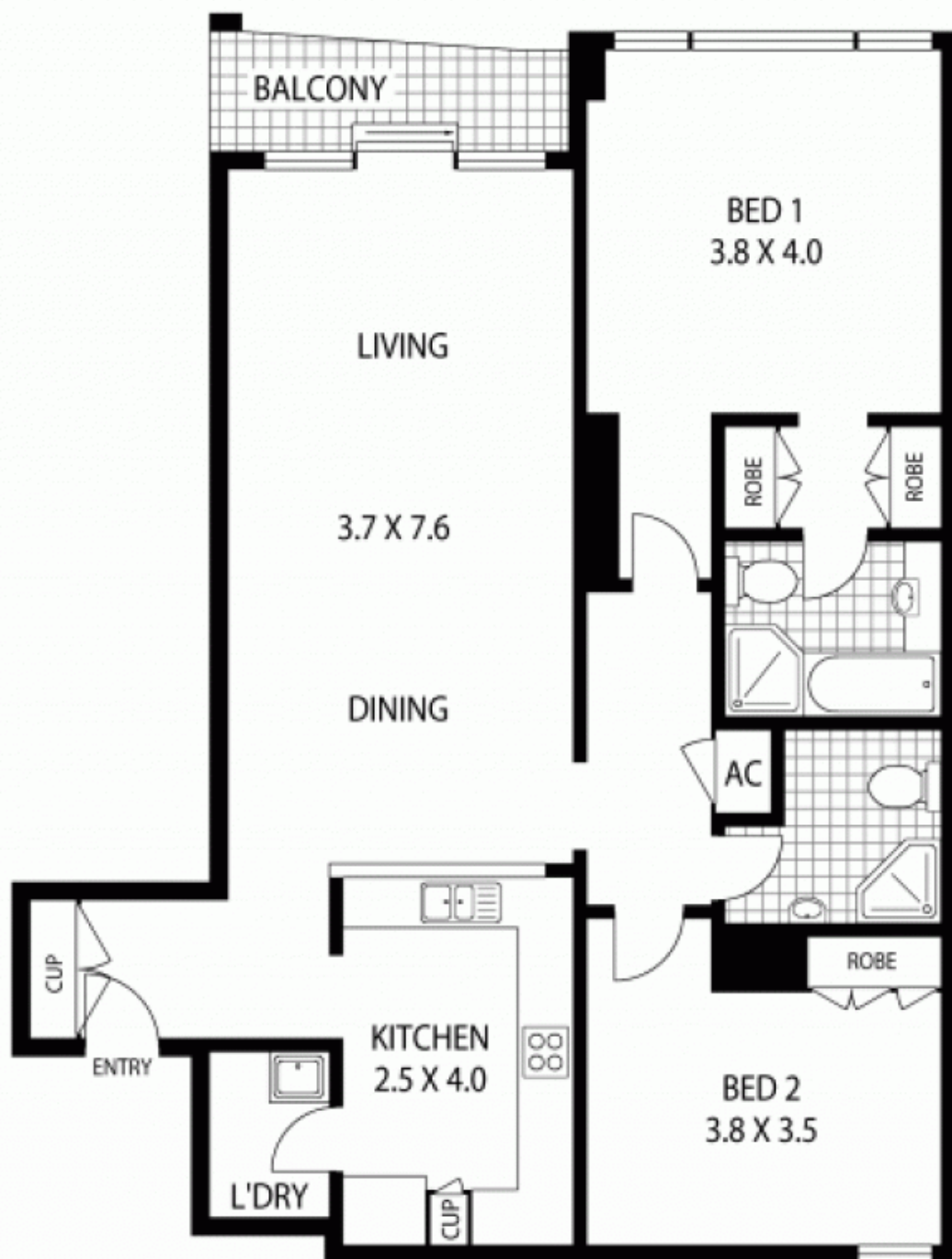
#### Agent

**Ettiene West**

 0410 593 749

 [ettiene@morton.com.au](mailto:ettiene@morton.com.au)

[morton.com.au](http://morton.com.au)



THIRTEENTH FLOOR

NOTE : SINGLE SECURITY  
PARKING AVAILABLE



1303/281 ELIZABETH STREET

SYDNEY

Floor plan supplied by [www.thepicturedesk.com.au](http://www.thepicturedesk.com.au). This floor plan is provided for indicative purposes only. Measurements are approximate and not to scale. The vendor, agency and supplier will accept no liability for its accuracy. Interested parties are advised to make their own independent enquiries.