



# morton.

**SYDNEY** 99/365 Kent Street

 2  2  1

Ideal for the professional on the run wanting to reside or invest in an urban location consisting of a very desirable floor plan with quality finishes and ample space (94sqm), this apartment has an air of modernity and style. Complete with parking, it is quietly located at the rear of the building with a pleasant outlook.

- Attractive views, entertainers patio
- Two bedrooms with built- ins
- Open plan living/dining area
- Modern open plan kitchen
- Two modern bathrooms, main ensuite
- Internal laundry
- Secure car space and storeroom
- Pool, gymnasium, concierge
- Security building
- Stroll to Darling Harbour, transport and CBD

### View

As advertised or by appointment

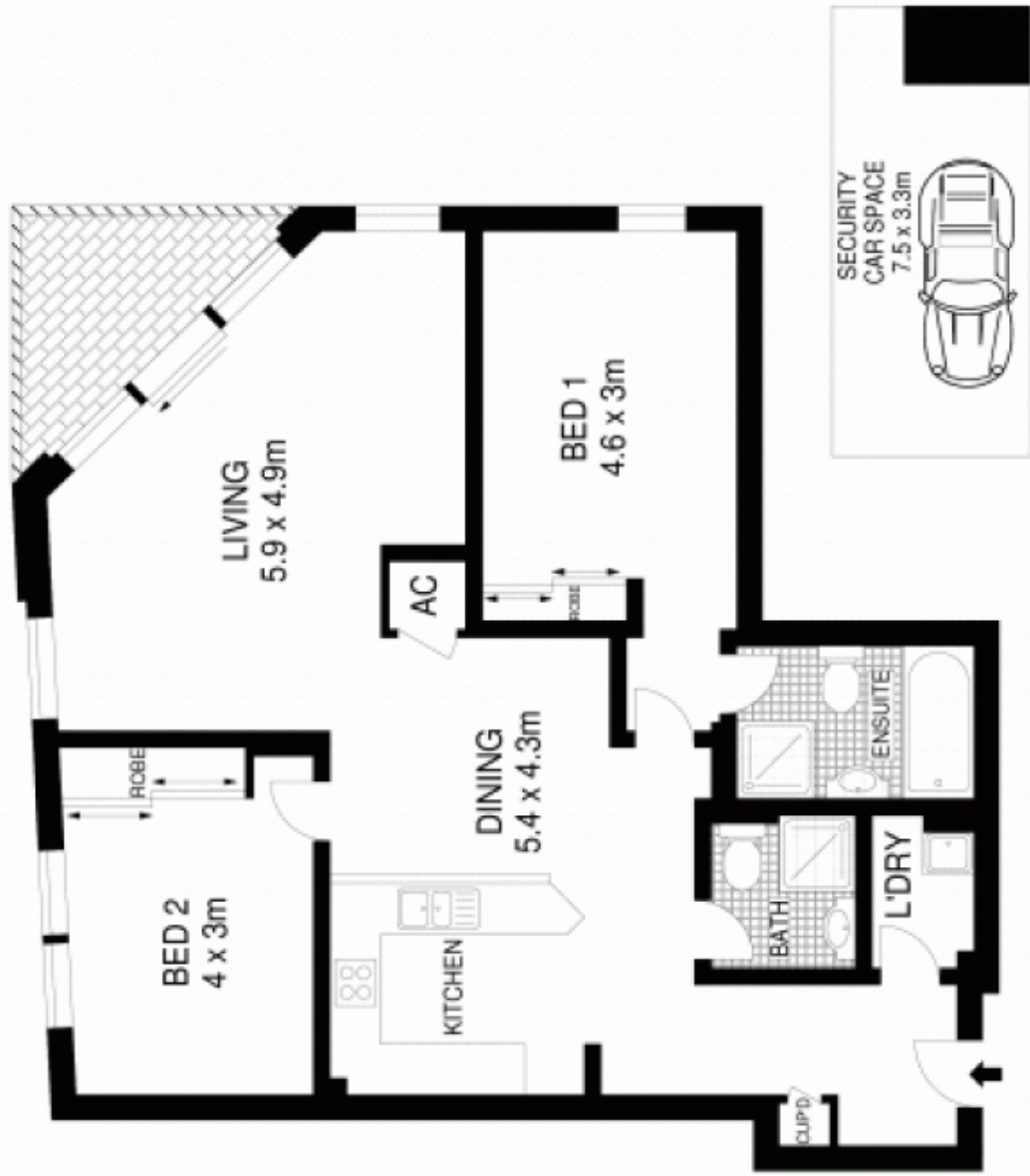
### Agent

**Ettiene West**

 0410 593 749

 [ettiene@morton.com.au](mailto:ettiene@morton.com.au)

[morton.com.au](http://morton.com.au)



LEVEL TWELVE

LEVEL FOUR

0 1 2 3 4 5

SCALE (METRES)

PLANS SHOWN ONLY INDICATIVE OF LAYOUT. DIMENSIONS ARE APPROXIMATE



APARTMENT : 94m<sup>2</sup>  
PARKING : 23m<sup>2</sup>

99/365 KENT STREET

SYDNEY