



morton.

SURRY HILLS 1307/20 Pelican Street

 2  2  2

Like a sentinel on the fringe of the CBD, metres to Oxford Street's vibrant hub, 'Monument' has been innovatively designed by award-winning architects Wood Marsh to deliver the ultimate urban living environment.



- Sunlit living and dining
- North facing entertainer's balcony
- Streamline CaesarStone kitchen
- Stainless steel Miele appliances
- Double bedrooms with built-ins
- Integrated study alcove
- Stylish designer bathrooms
- Landscaped water gardens
- Glass-edged pool, gym and concierge
- Reverse cycle air, concealed laundry

View

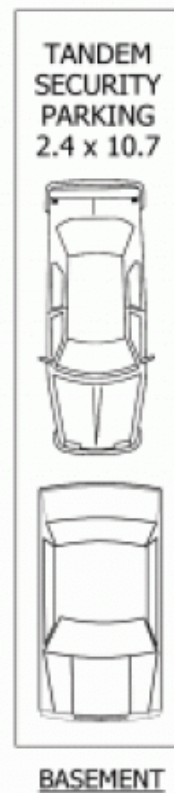
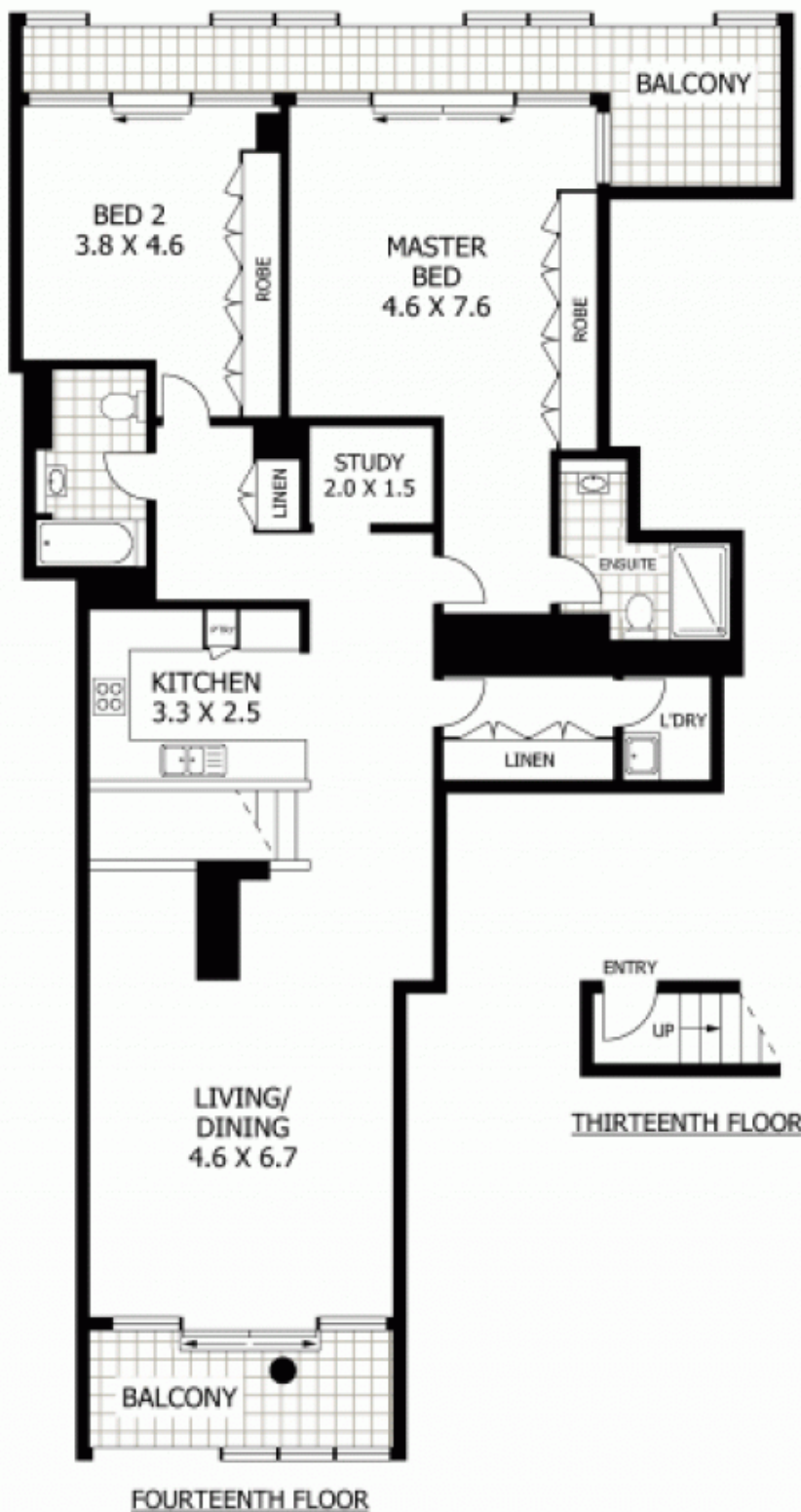
As advertised or by appointment

Agent

Ettiene West

 0410 593 749
 ettiene@morton.com.au

morton.com.au



1307/20 PELICAN STREET

SURRY HILLS

SCAPE Floor Planning Disclaimer: This floor plan is conceptual only. It is provided for illustrative purposes only and should not be relied upon. We make no guarantee as to the correctness of this plan. All interested parties should make and rely on their own enquiries in determining the accuracy of the information contained in this floor plan.