



# morton.

**SYDNEY** 317/49 Shelley Street



Fresh interiors, quality finishes and ample space come together to create this urban oasis. Ideal for the professional couple on the run or astute investors.

- One bedroom with built-in robe
- Cleverly designed separate study
- Open plan living and dining area
- Modern kitchen with breakfast bar
- Bathroom and internal laundry
- Reverse cycle air conditioning
- Secure building, car space

### View

As advertised or by appointment

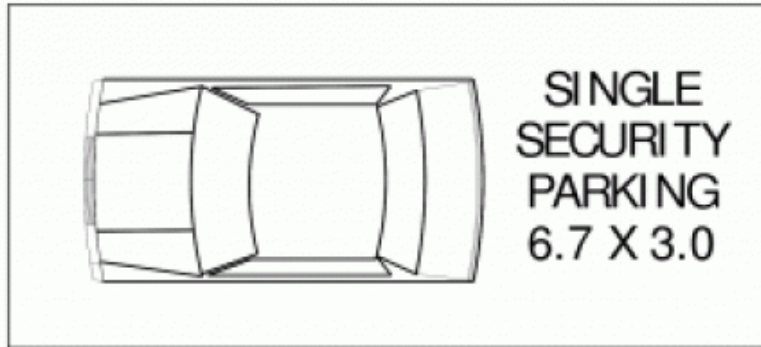
### Agent

**Ettiene West**

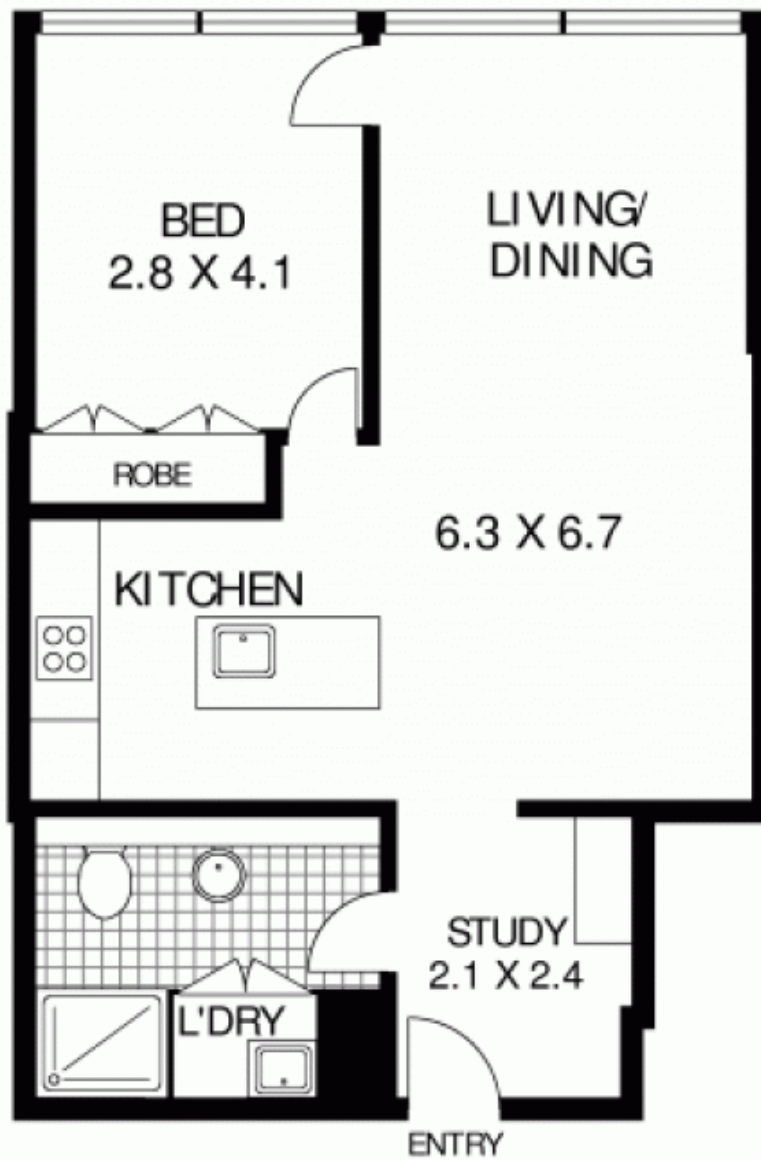
📞 0410 593 749

✉️ [ettiene@morton.com.au](mailto:ettiene@morton.com.au)

[morton.com.au](http://morton.com.au)



BASEMENT FLOOR



SECOND FLOOR



**317/ 49 SHELLEY STREET**

**SYDNEY**

**SCAPE Floor Planning Disclaimer:** This floor plan is conceptual only. It is provided for illustrative purposes only and should not be relied upon. We make no guarantee as to the correctness of this plan. All interested parties should make and rely on their own enquiries in determining the accuracy of the information contained in this floor plan.