



# morton.

**SYDNEY** 609/28 Harbour Street

 2  2  1

This contemporary 109sqm apartment provides the ultimate in inner-city living. The combined living and dining areas flow out onto the spacious balcony that spans the entire length of the apartment and overlooks the Chinese Gardens and CBD.

- Spacious gourmet kitchen with stone benches
- Two generous bedrooms BIRs & balcony access
- Master with ensuite. Second bathroom
- Ensuite with stone benches, dual basins & tub
- Internal laundry, reverse a/c & security parking
- Facilities incl. concierge, rooftop pool, gym & BBQ
- Walk to CBD, Darling Harbour & China Town

### View

As advertised or by appointment

### Agent

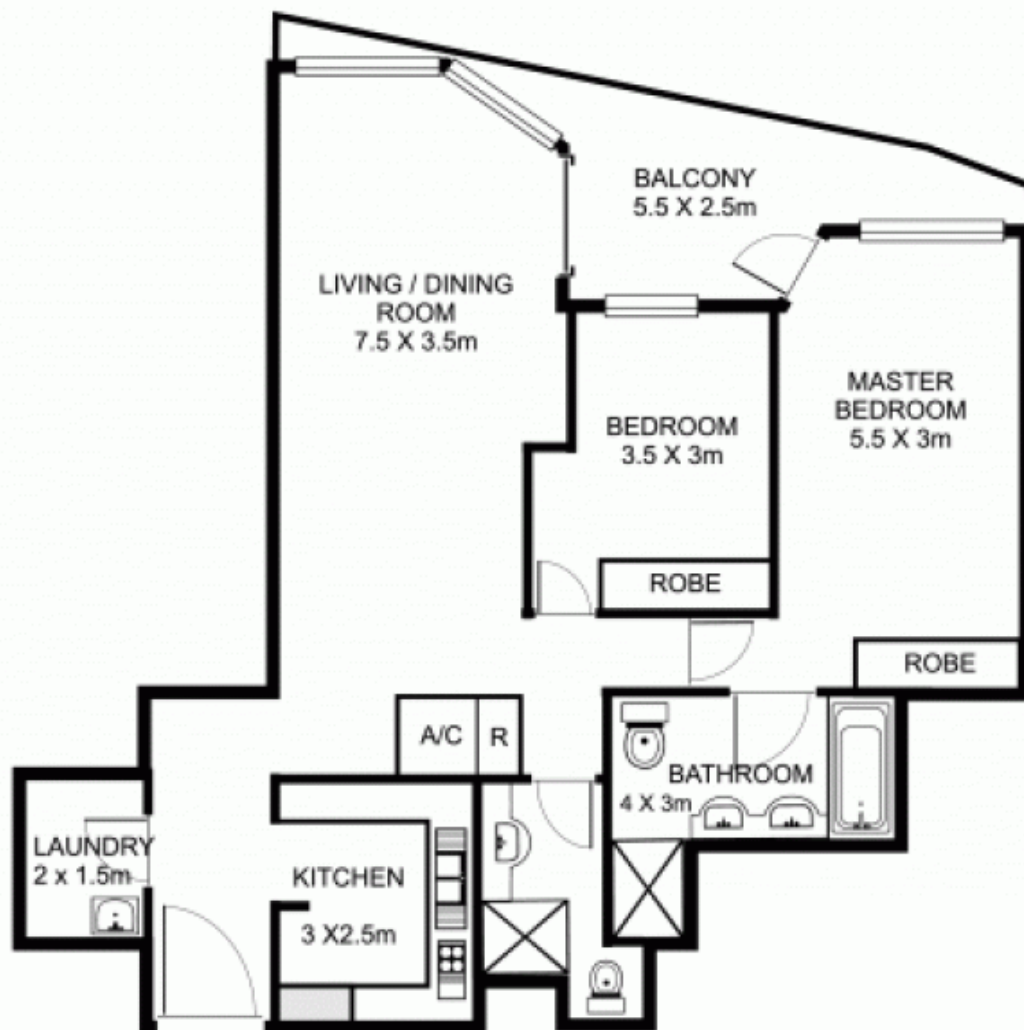
**Ettiene West**

 0410 593 749

 [ettiene@morton.com.au](mailto:ettiene@morton.com.au)

[morton.com.au](http://morton.com.au)

## 609/28 Harbour Street Sydney



\* note  
all measurements are approximate only.  
Plan is provided only as an indication of layout.