



# morton.

**SURRY HILLS** 716/20 Pelican Street

 3  2  2

Set over two luxurious levels, this spacious light-filled apartment is in The Monument: a landmark building designed by award winning architects, Wood Marsh. Featuring the latest in chic interior finishes, with exclusive access to a stunning glass-edged pool, landscaped gardens and gymnasium. This apartment offers resort-style luxury in the heart of the inner-east.

Step outside the stunning concierge serviced lobby and you're just minutes away from vibrant Oxford Street, Hyde Park, Sydney CBD, Cook Phillip Pool and Crown Street.

- Generous open-plan living
- Balcony with harbour views
- Highest quality finishes
- A/C and built-in storage
- Gourmet CaesarStone kitchen
- Miele appliances and eat-in area
- Large master with stunning ensuite
- Main bathroom with extra deep bath

[morton.com.au](http://morton.com.au)

### View

As advertised or by appointment

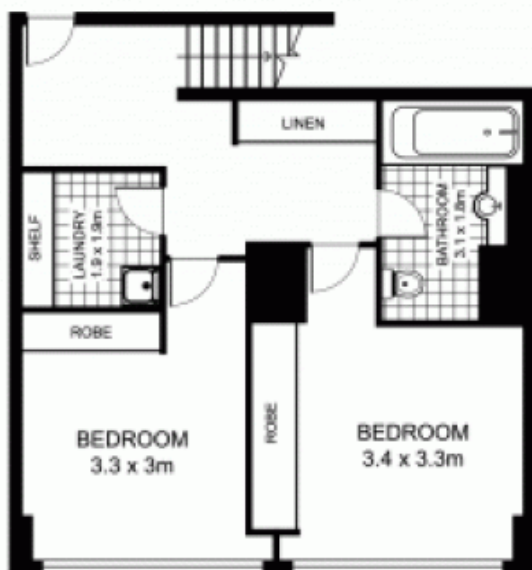
### Agent

**Ettiene West**

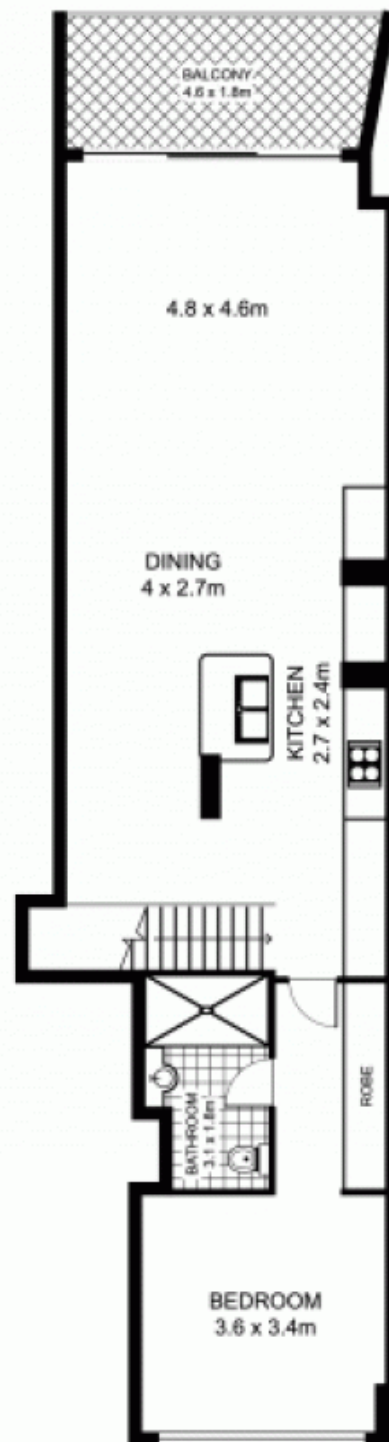
 0410 593 749

 [ettiene@morton.com.au](mailto:ettiene@morton.com.au)

# 716/20 Pelican St, DARLINGHURST



LOWER LEVEL



UPPER LEVEL



This floor plan is intended as a guide only. Layout dimensions are approximate only. No representations or warranties of any nature whatsoever are given or intended. Any person using this information should rely on their own enquiries.