



morton.

SURRY HILLS 717/20 Pelican Street

2 2 1

With fantastic city views and water glimpses from its north-facing terrace, this light and bright apartment offers plenty of space and privacy. Positioned in the prestigious architecturally designed Monument building, it is moments to the CBD and Oxford Street's cafes, shops and night spots. With full security including video intercom, there is also a concierge, lift, gym and pool.

- Generous terrace with views of the CBD and landscaped gardens
- Spacious lounge & dining; huge Caesarstone & Miele kitchen
- Two large bedrooms with built-ins on opposite sides of the unit
- Master with chic ensuite; second bed next to main bathroom

Strata: \$1047.38 approx per quarter
Council: \$151 approx per quarter
Water: \$115 approx per quarter
Internal area: 107 sqm

View

As advertised or by appointment

Agent

Morton RE

info@morton.com.au

morton.com.au

717/20 Pelican St, DARLINGHURST

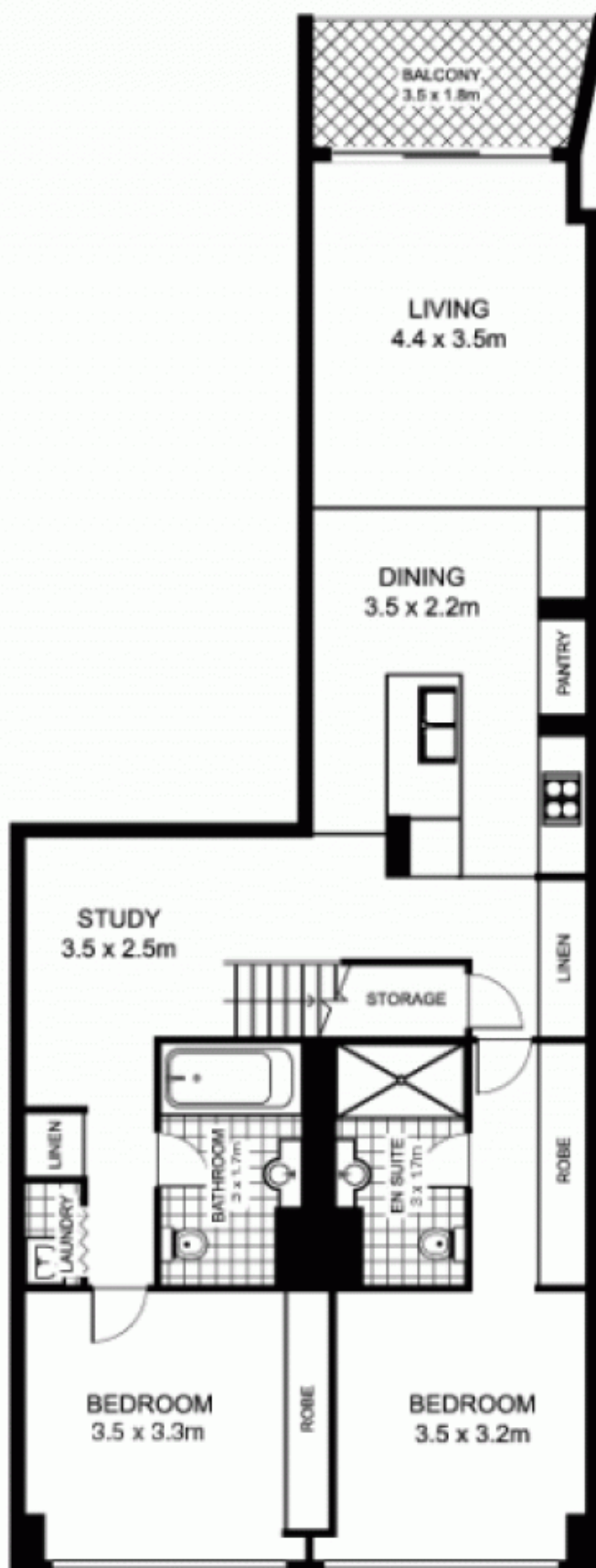
SCALE 



- This floor plan is intended as a guide only
- Layout dimensions are approximate only
- No representations or warranties of any nature whatsoever are given or intended
- Any person using this information should rely on their own enquiries



UPPER LEVEL



LOWER LEVEL