



# morton.

**SYDNEY** 801/35 Shelley Street

 2  2  1

Located within a short stroll to the city centre & vibrant Cockle Bay & Darling Harbour this top floor apartment offers excellent space, great natural light & stunning view of Darling Harbour.

Large open plan living & dining with high ceilings area opens onto entertainer's balcony with attractive Harbour views. Designer kitchen with ceasar stone benchtops, additional island bench & European stainless steel appliances.

Two generous bedrooms both with built-ins & master with designer ensuite bathroom. Reverse cycle air conditioning, security intercom & lift access. Secure under cover parking and storage room.

Resort style facilities include outdoor pool, spa, sauna & gym. This is a rare opportunity to obtain an oversized city pad with an excellent presentation.

#### OUTGOINGS

Water Rates: \$102 p.q approx

[morton.com.au](http://morton.com.au)

#### View

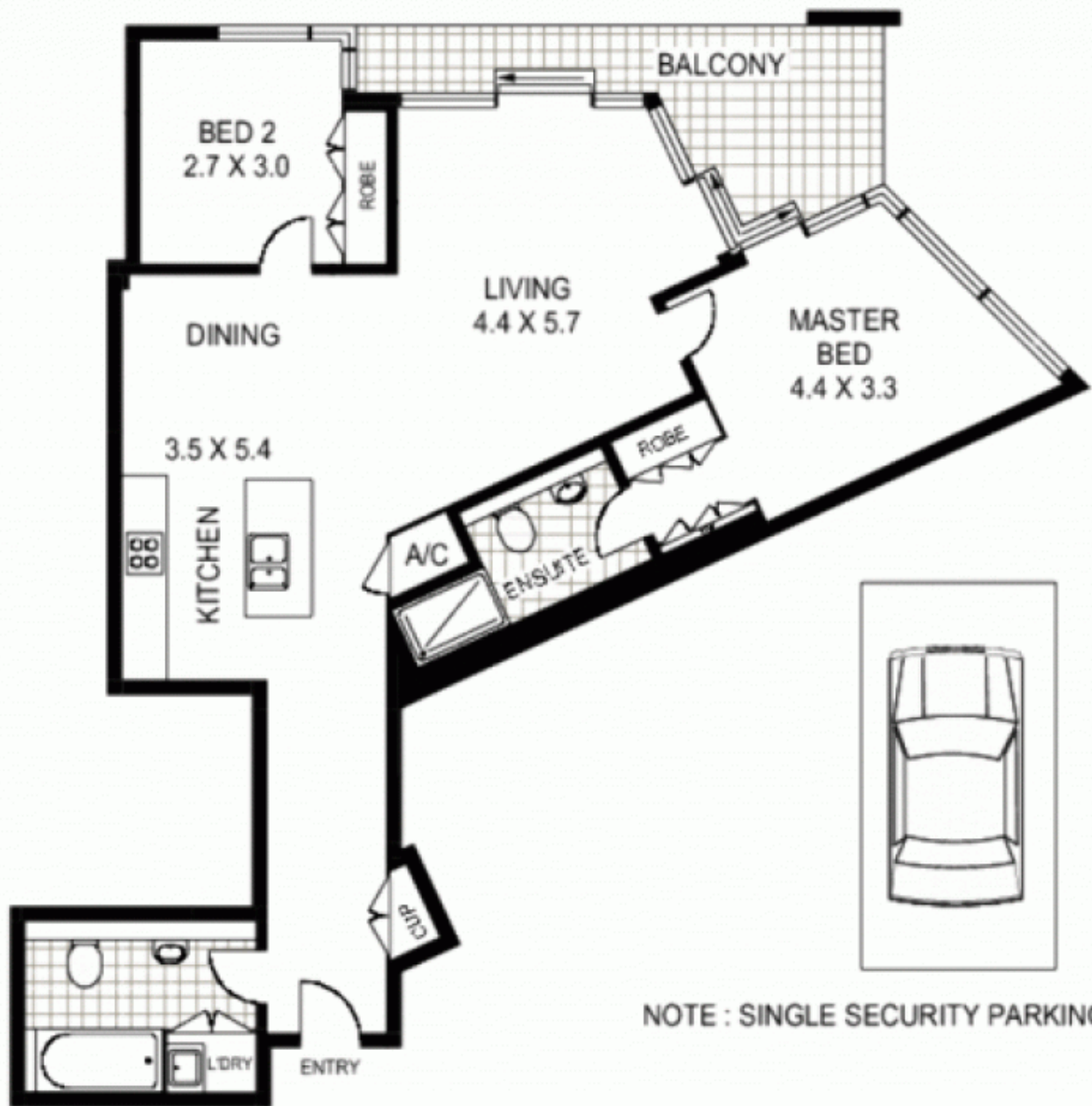
As advertised or by appointment

#### Agent

##### Ettiene West

 0410 593 749

 [ettiene@morton.com.au](mailto:ettiene@morton.com.au)



NOTE : SINGLE SECURITY PARKING

EIGHTH FLOOR



801/35 SHELLEY STREET

SYDNEY

Floor Plan Disclaimer: Mind the Gap (mtg) floor plans / site plans are intended as a guide only. No representations or warranties of any nature whatsoever are given or intended and any person using this information should always rely on their own enquiries. mtg property marketing services - 1300 133 145 - photography, floor plans, virtual tours, video tours, copywriting, project marketing - www.mindthegap.com.au