



morton.

Waterloo 512/830 Elizabeth Street

 3  2  1

Offering the perfect balance of a timeless heritage building, industrially inspired designs, and bespoke apartments; Sydney's latest development 'Iconic' will set a new standard in living within Waterloo. Due for completion by the end of 2017, the Iconic's development is well underway! Masterfully created architecture and interiors by SJB (with styling by Coco-Republic), Iconic Waterloo will embrace its status as a boutique development by maintaining the building's heritage as well as introducing industrial and luxury elements; thus establishing something truly amazing for Sydney's property market. The development will consist of 76 beautifully designed apartments, offering residents:

- Contemporary modular designs, combining the best in raw solid materials, and a modernised, fresh look
- Bespoke cabinetry throughout each kitchen, bathroom, and bedroom
- A convenient location, placed in close proximity to the heart of Sydney's CBD
- A range of options in transport, being within 500m of Green

morton.com.au

View

As advertised or by appointment

Agent

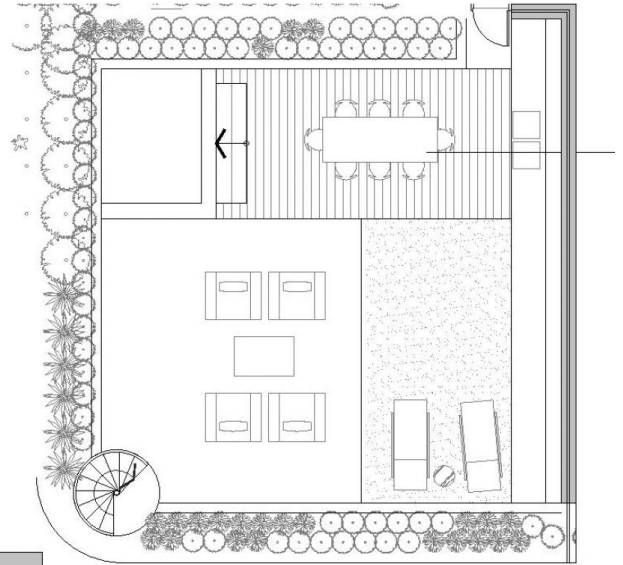
Sarah Fowell

 0437 492 129

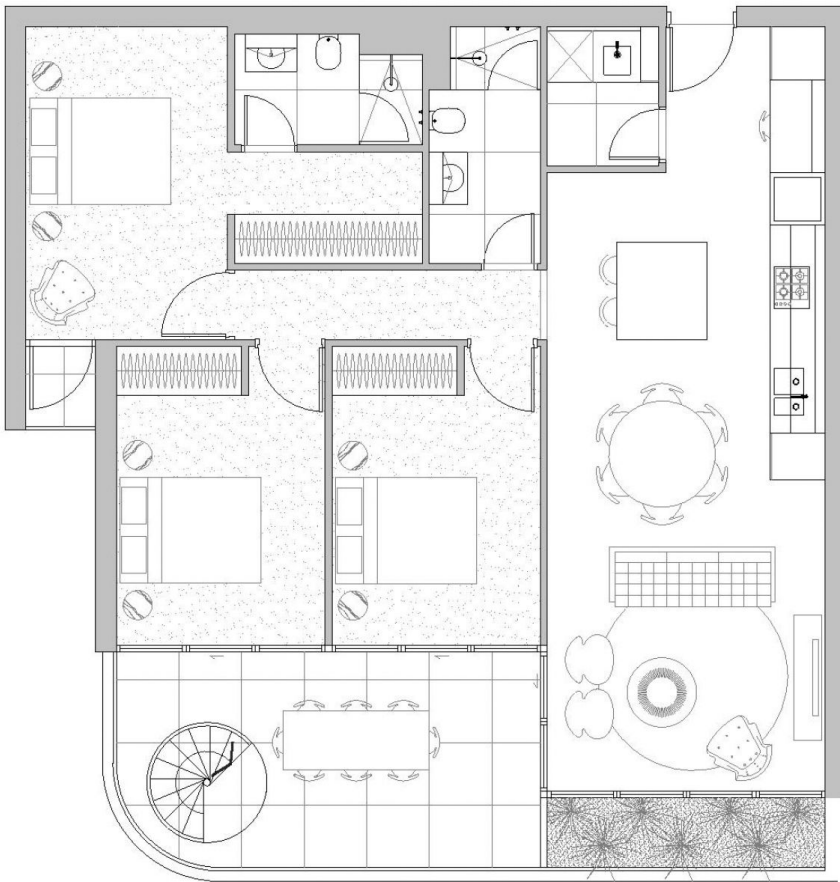
 sarah@morton.com.au

ICONIC

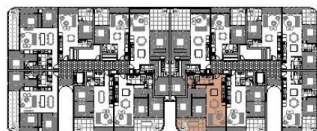
WWW.ICONICWATERLOO.COM | 1800 223 001



^ Terrace (not to scale)



APARTMENT 5.12



level 5



ELIZABETH STREET

Bedrooms:	3
Bathrooms:	2
Carspace:	1
Internal area:	105 sqm
External area:	137 sqm
Total area:	242 sqm



CBRE