



# morton.

Little Bay 3/10 Darwin Avenue

🛏 2 🚿 2 🚗 1

Located just 20 minutes from the Sydney CBD and just moments from Little Bay Beach, East Village comprises a unique collection of superbly restored landmark heritage buildings. This two bedroom single storey apartment features high ceilings, grand windows, and huge entertaining space with corridor views of the ocean.

- Open plan living, dining and kitchen area
- Quality polished timber floorboards
- Soaring four metre high ceilings and original features
- Grand windows maximise light and airflow
- Huge colonnaded private outdoor entertaining areas
- High quality appliances including washer/dryer, refrigerator and dishwasher
- Two bright bedrooms with built in robes and neutral woollen carpets
- Two stylish bathrooms, loft storage space and internal laundry
- Open air car space and over 10sqm of basement storage

### View

As advertised or by appointment

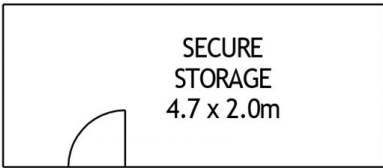
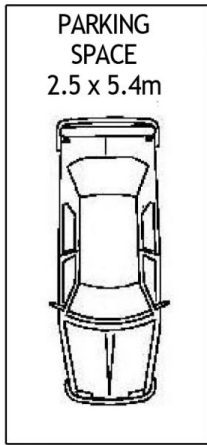
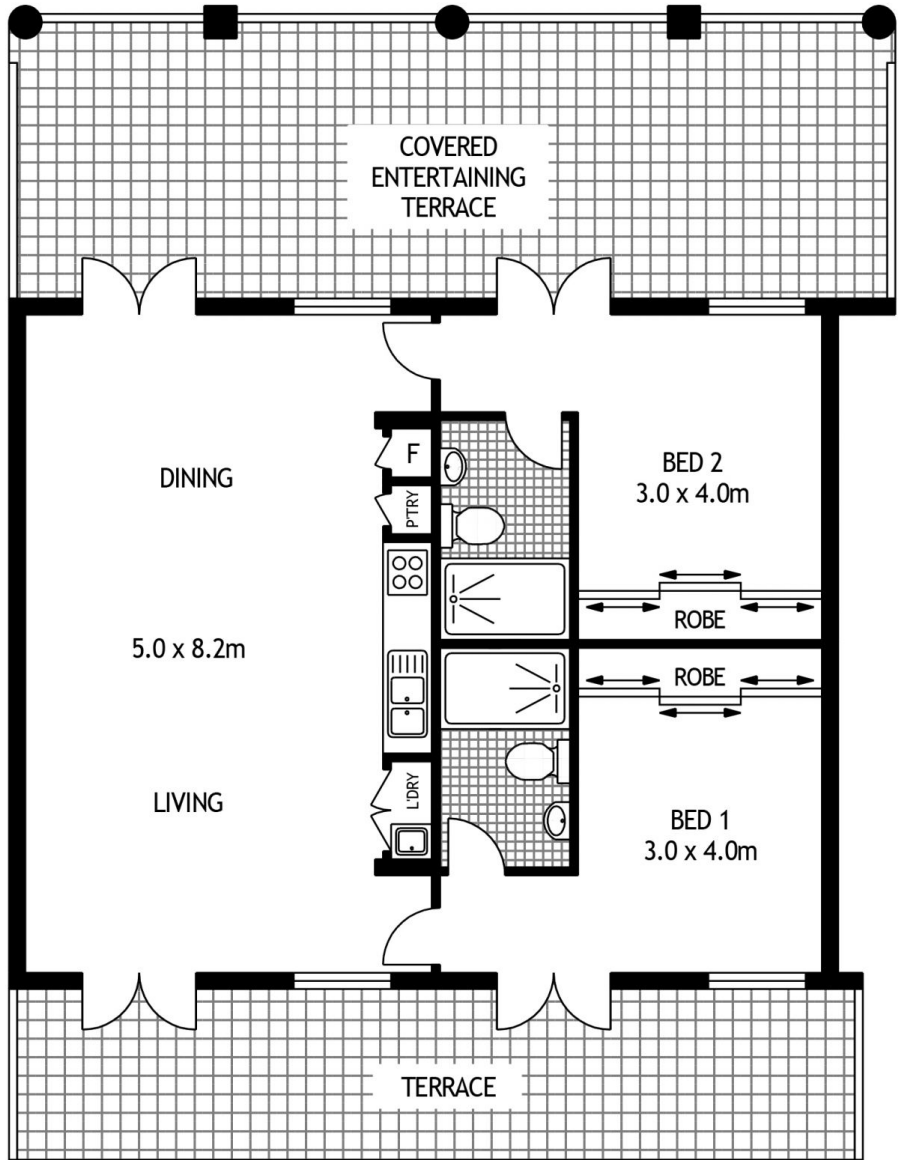
### Agent

**Sarah Fowell**

📞 0437 492 129

✉ sarah@morton.com.au

[morton.com.au](http://morton.com.au)



GROUND FLOOR



3/10 DARWIN AVENUE

LITTLE BAY

SCAPE Floor Planing Disclaimer: This floor plan is conceptual only, it is provided for illustrative purposes only and should not be relied upon. We make no guarantees to the correctness of this plan. All interested parties should make and rely on their own enquiries in determining the accuracy of the information contained in this floor plan.