



# morton.

**Breakfast Point** 82/5 Woodlands Avenue

 2  2  2

A statement in luxury and style, this eighth level apartment offers a tranquil lifestyle in the immaculate inner-west oasis of Breakfast Point. Part of the Spyglass Hill complex, a quiet and private residence awaits, highlighted by quality finishes with spacious indoor and outdoor entertaining areas.

- North-West facing with bright interiors and harbour outlook
- Expansive 119sqm layout
- Open plan gas kitchen with stone bench tops and stainless steel appliances
- Lounge and dining flow out to large entertainers balcony
- Grand master bedroom with ensuite and walk in robe
- 2nd large bedroom with built-in robe
- Fully tiled deluxe main bathroom
- Ducted air-conditioning and large laundry
- Well-maintained security building with intercom access
- Double parking space with secure access

### View

As advertised or by appointment

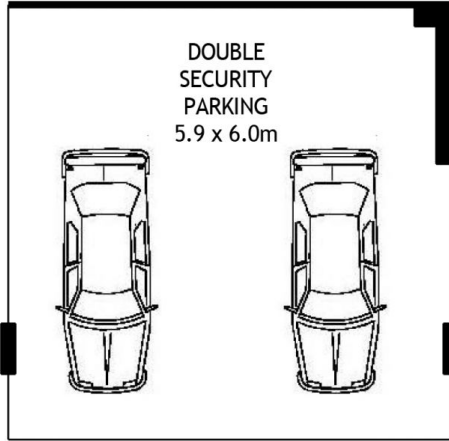
### Agent

**Sarah Fowell**

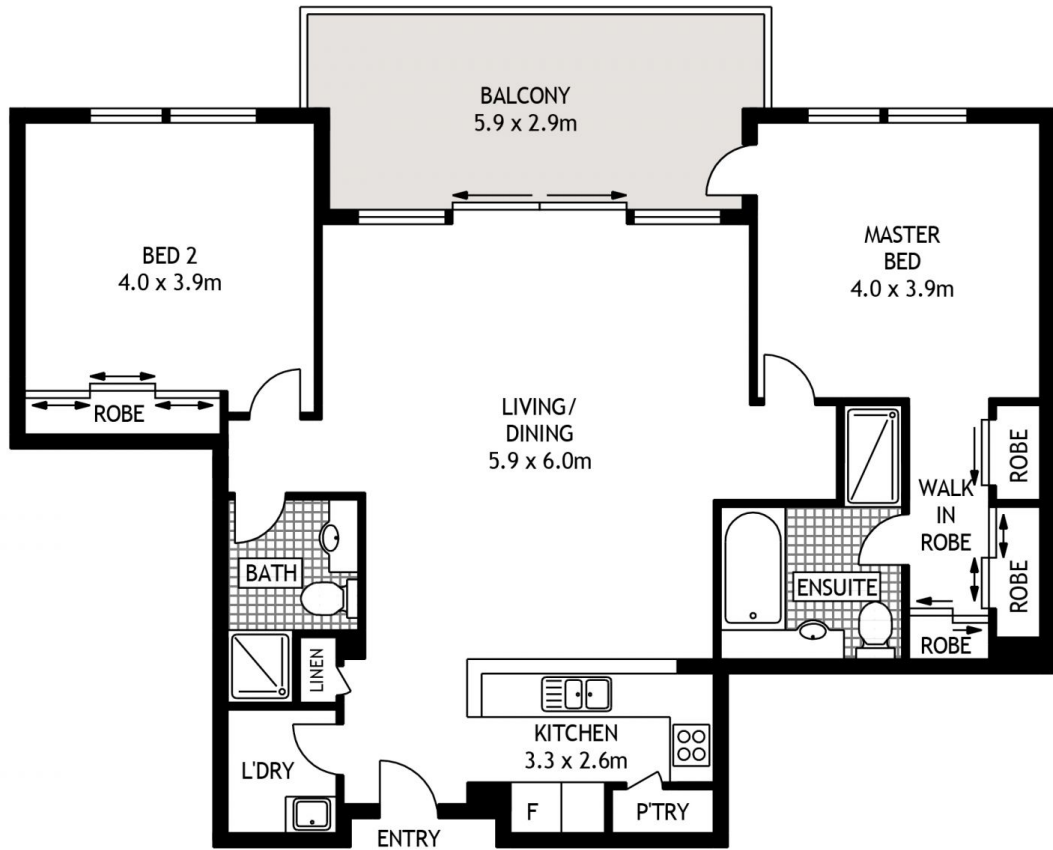
 0437 492 129

 sarah@morton.com.au

[morton.com.au](http://morton.com.au)



BASEMENT TWO



EIGHTH FLOOR



82/5 WOODLANDS AVENUE

BREAKFAST POINT

SCAPE Floor Planing Disclaimer: This floor plan is conceptual only. it is provided for illustrative purposes only and should not be relied upon. We make no guarantees to the correctness of this plan. All interested parties should make and rely on their own enquiries in determining the accuracy of the information contained in this floor plan.