



morton.

Camperdown 616/1-3 Larkin Street



This 6th floor city fringe apartment has an ideal NE aspect with sweeping views to the CBD skyline and is peacefully positioned in the "La Maison" complex along a quiet cul-de-sac. Close to RPA, USYD, city colleges and the hip eateries of Glebe Point Road, a walk-to-everywhere lifestyle is guaranteed. This investment opportunity is perfect for buyers looking for that first step or a portfolio addition, in a thriving and progressive location.

- Immaculately presented interiors with new carpets throughout
- A comfortable and easy to live in floorplan
- Open plan gas kitchen, living and dining with floor to ceiling windows
- All-weather balcony with district views to the city
- Oversized bedroom with built-in robe and leafy outlook
- Ensuite bathroom with bath and shower
- Internal laundry and air-conditioning
- Secure intercom entry in a well maintained building

View

As advertised or by appointment

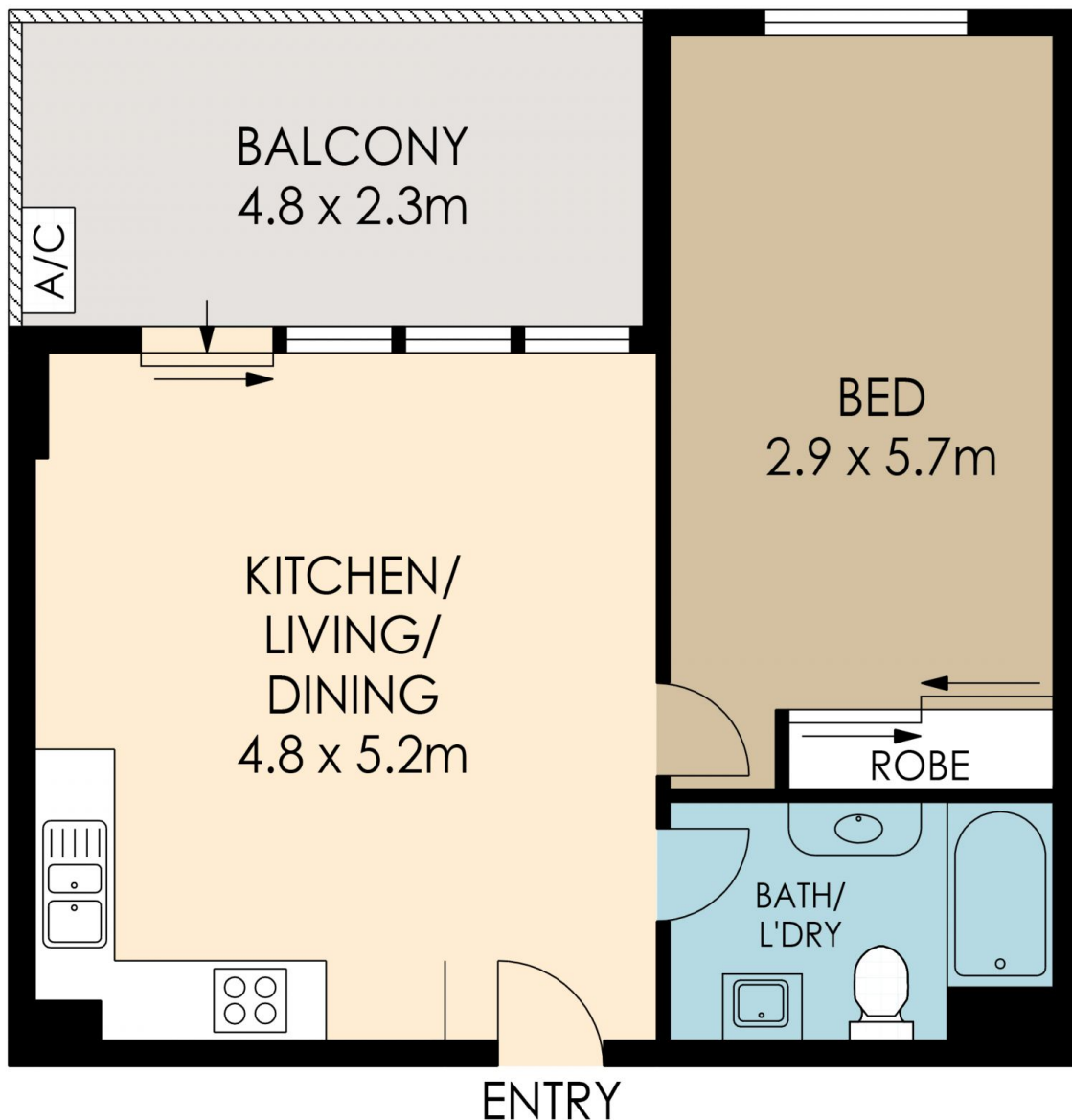
Agent

Sarah Fowell

📞 0437 492 129

✉️ sarah@morton.com.au

morton.com.au



616/1-3 Larkin Street, Camperdown

The information above is provided in good faith and has been provide to us from a variety of sources. We have not verified whether the information is accurate and do not have any belief one way or other in its accuracy. We do not accept any responsibility to any person for its accuracy and do no more than pass it on. All interested parties should rely on their own inquiries in order to determine whether or not this information is in fact accurate.