



morton.

Woolloomooloo 130/6 Cowper Wharf Roadway

 1  1  1

Occupying a coveted absolute waterfront position and designed for seamless indoor/outdoor entertaining, this exceptional property epitomises effortless contemporary living. Flooded with light, the views flow across the sparkling harbour waters to Garden Island and historic Potts Point.

- Large private waterfront deck is ideal for entertaining
- Inviting master bedroom with built-ins and ensuite access
- Gourmet gas kitchen boasts CaesarStone benches, exquisite bathroom
- Ducted air conditioning, internal laundry and timber flooring
- Well presented for the low maintenance lifestyle
- Secure and rare parking space in the Wharf

View

As advertised or by appointment

Agent

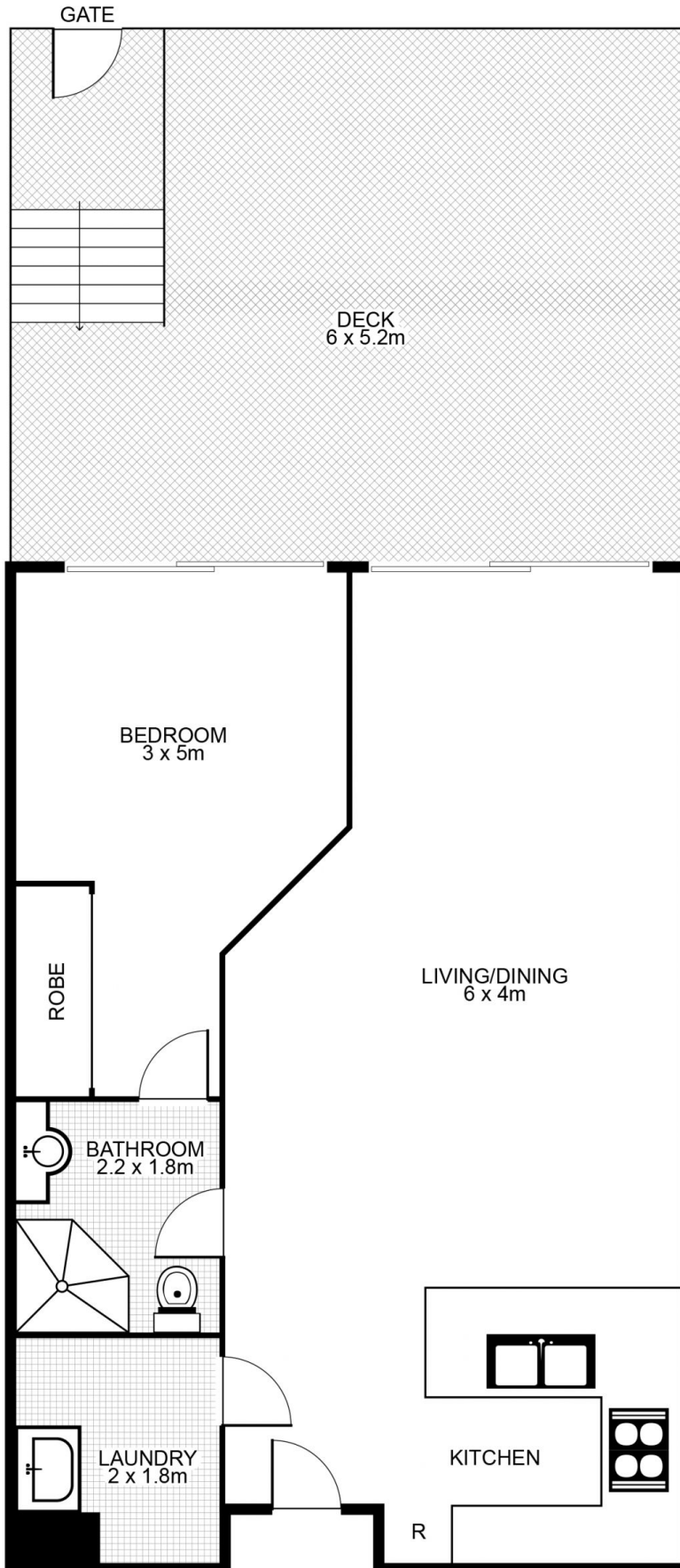
Noel Jenkins

 0410 593 694

 noel@morton.com.au

morton.com.au

130/6 Cowper Wharf Road, WOOLLOOMOOLOO



This is intended as a guide only. Layout dimension are approximate only. No representation or warranties of any nature are given or intended. Any person using this information should rely on their own enquiries.

Plans by