



morton.

Woolloomooloo 64/27-51 Palmer Street

 2  3  1

Over two levels this prestige 191sqm top floor apartment boasts a generous 70sqm main terrace which is a more than ideal spot for entertaining guests. Stunning views over the Domain, Centre Point Tower and North towards the harbour. Within a stroll to vibrant cafés, Woolworths, and it is a short walk to the heart of the CBD.

- Two bedrooms both with ensuite bathroom and built ins
- Separate living and dining areas
- Two separate balconies and enormous partially cover terrace

- Modern kitchen with Smeg appliances
- Internal laundry
- Ducted air-conditioning throughout
- Visitor parking inside the buildings security car park
- Remote lock up 15sqm garage on title


View

As advertised or by appointment

Agent

Noel Jenkins

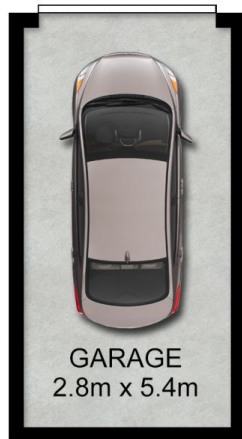
 0410 593 694

 noel@morton.com.au

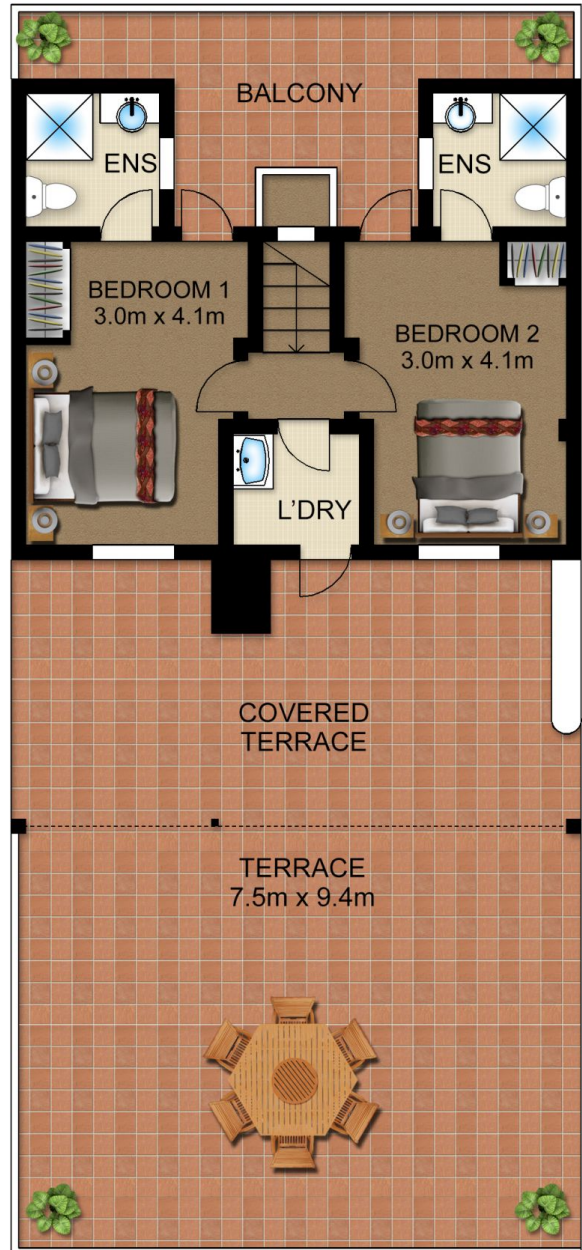
morton.com.au



LEVEL FIVE



STREET LEVEL



UPPER LEVEL

morton.

64/27 Palmer Street, WOOLLOOMOOLOO

Not to scale • All measurements are approximate • Drawn for marketing purposes only • Floorplan by © Industrie Media

