



morton.

Woolloomooloo 437/6 Cowper Wharf Roadway

🛏 2 🚿 1 🚗 1

A superb opportunity to enter what is known to be one of Sydney's most exclusive residential communities. This welcoming oversized apartment presents a lifestyle of warmth, character and convenience. A modern offering in a historic context, the home will be an enviable address and appeal to all.

- Well-proportioned entertainers balcony
- Uninterrupted views across the harbour to Potts Point
- Sleek kitchen has gas appliances, granite benches
- Bright open plan living areas
- Ducted air conditioning, internal laundry
- 24 hour onsite security with video intercom
- Optional pool and gymnasium membership

View

As advertised or by appointment

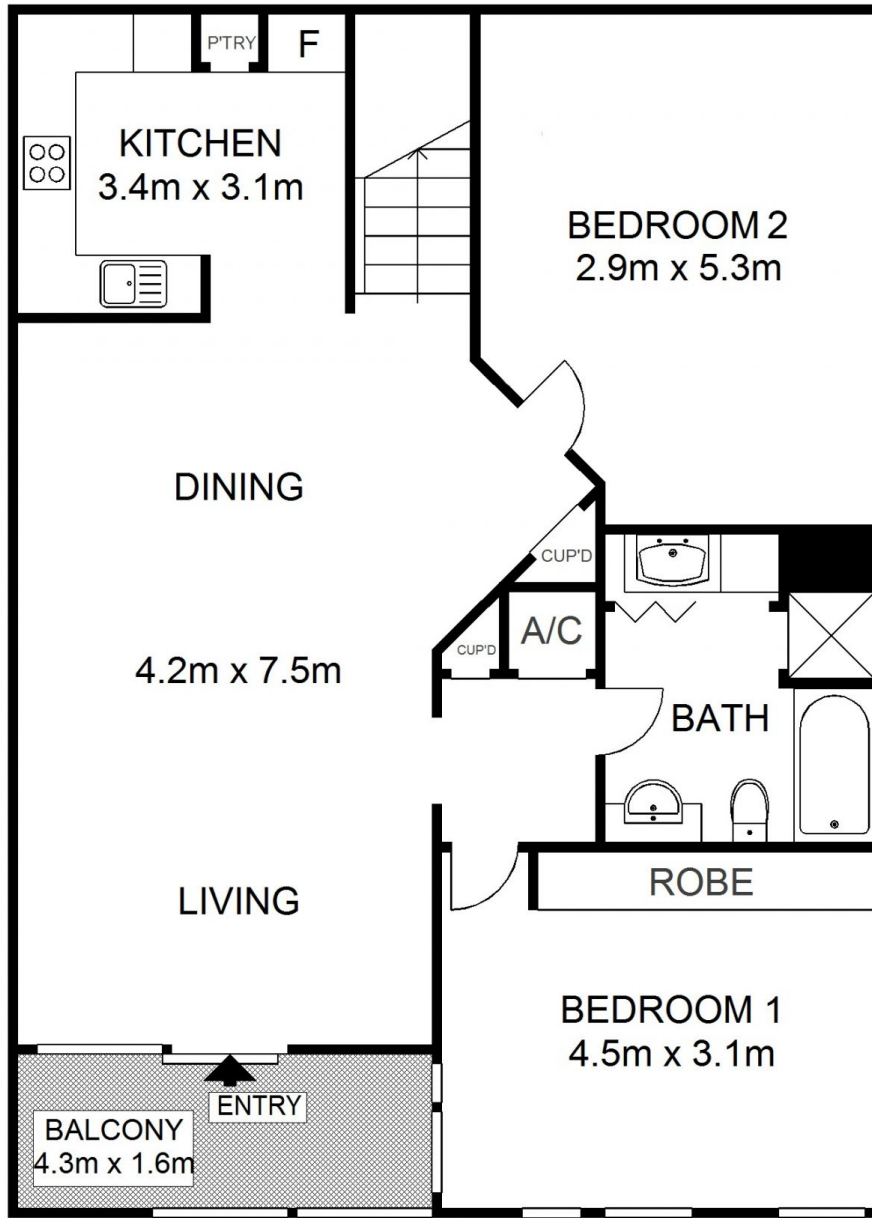
Agent

Noel Jenkins

📞 0410 593 694

✉ noel@morton.com.au

morton.com.au



Scale shown in metres. All dimensions herein are approximate and gathered from sources believed to be reliable. Whilst every effort is made for the accuracy of our floor plans, interested parties should rely on their own enquiries. Floor Plans by Industrie Media | industriemedia.tv

S1

437/6 Cowper Wharf Road, Woolloomooloo

