



# morton.

Woolloomooloo Level G/102/6 Cowper Wharf Rd

1 1 1

Flooded with light and immaculately maintained for a flawless harbourside lifestyle of convenience and character, this exceptional residence defines quality. Occupying a prized lower level position with direct access to the iconic boardwalk, this is the perfect investment or first home opportunity.

- A spacious 30sqm entertaining deck
- Stylishly presented with contemporary living in mind
- Light-filled master bedroom with ensuite and built-ins
- Generously sized combined lounge and dining area
- Designer kitchen, granite benches, gas appliances
- Lincoln Crescent parking space, laundry and air con

#### View

As advertised or by appointment

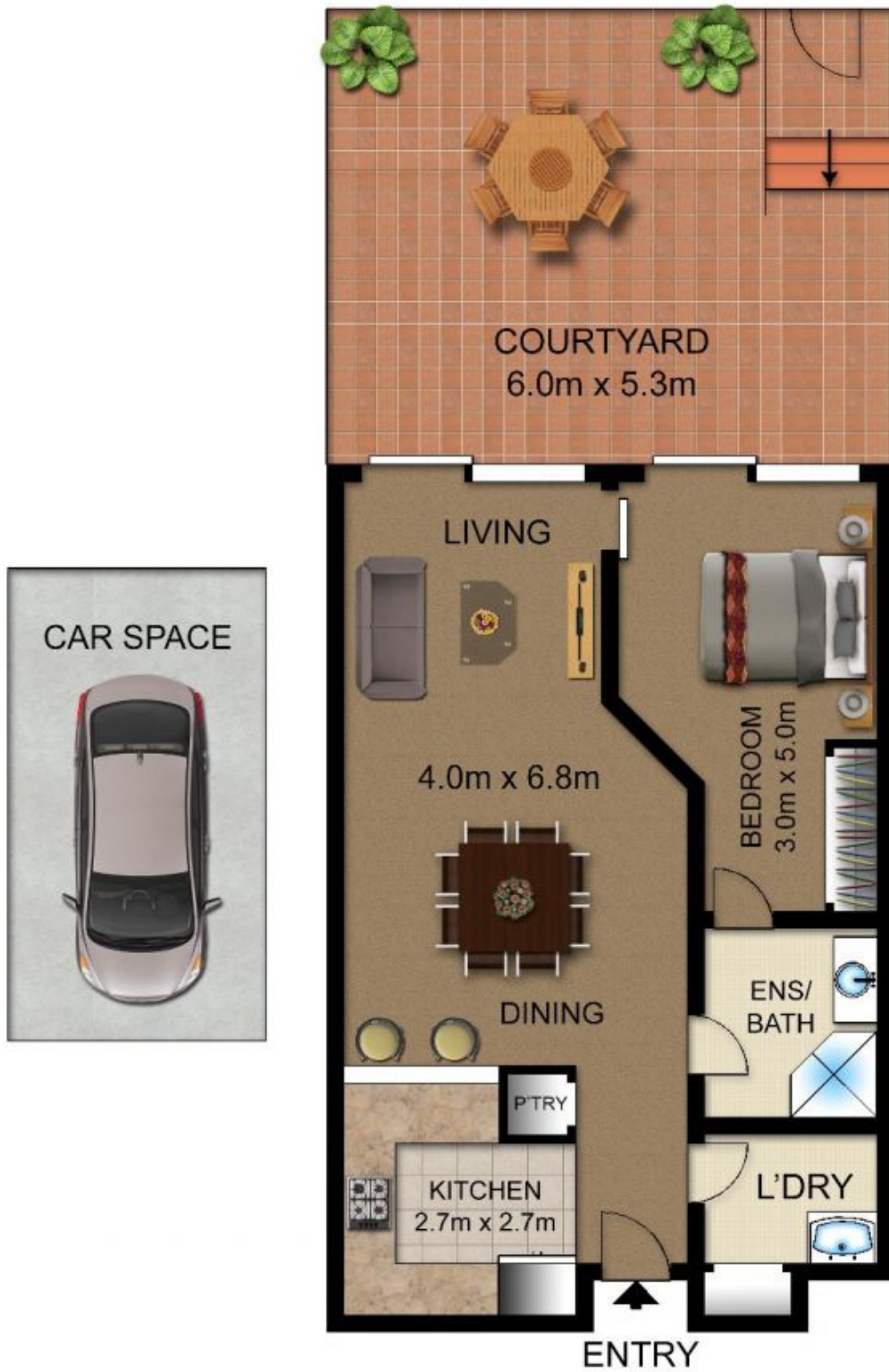
#### Agent

**Noel Jenkins**

0410 593 694

noel@morton.com.au

[morton.com.au](http://morton.com.au)



102/6 Cowper Wharf Road, WOOLLOOMOOLOO

Not to scale • All measurements are approximate • Drawn for marketing purposes only • Floorplan by © Industrie Media

