



**morton.**

**ERSKINEVILLE** 86/16-20 Eve Street

 3  2  1

Set within the sought after 'Glo' building with resort style facilities, this apartment is only a short walk to Erskineville village and Newtown's famous King Street. This north facing dual level apartment features city views an entertainers' terrace and open plan living.

- Open plan living and dining area
- Generous entertainers' terrace
- CaesarStone kitchen with stainless steel SMEG appliances
- Elevated master with private terrace and built-ins
- Pet friendly
- Second bedroom with ensuite and built ins
- Third bedroom with sunroom
- Family bathroom with bath and separate shower
- Separate study/home office.
- High ceilings, internal laundry, air-conditioning
- Manicured gardens, gym, pool and concierge onsite
- Security car space and large storage cage
- Moments to schools, parkland and transport links

**View**

As advertised or by appointment

**Agent**

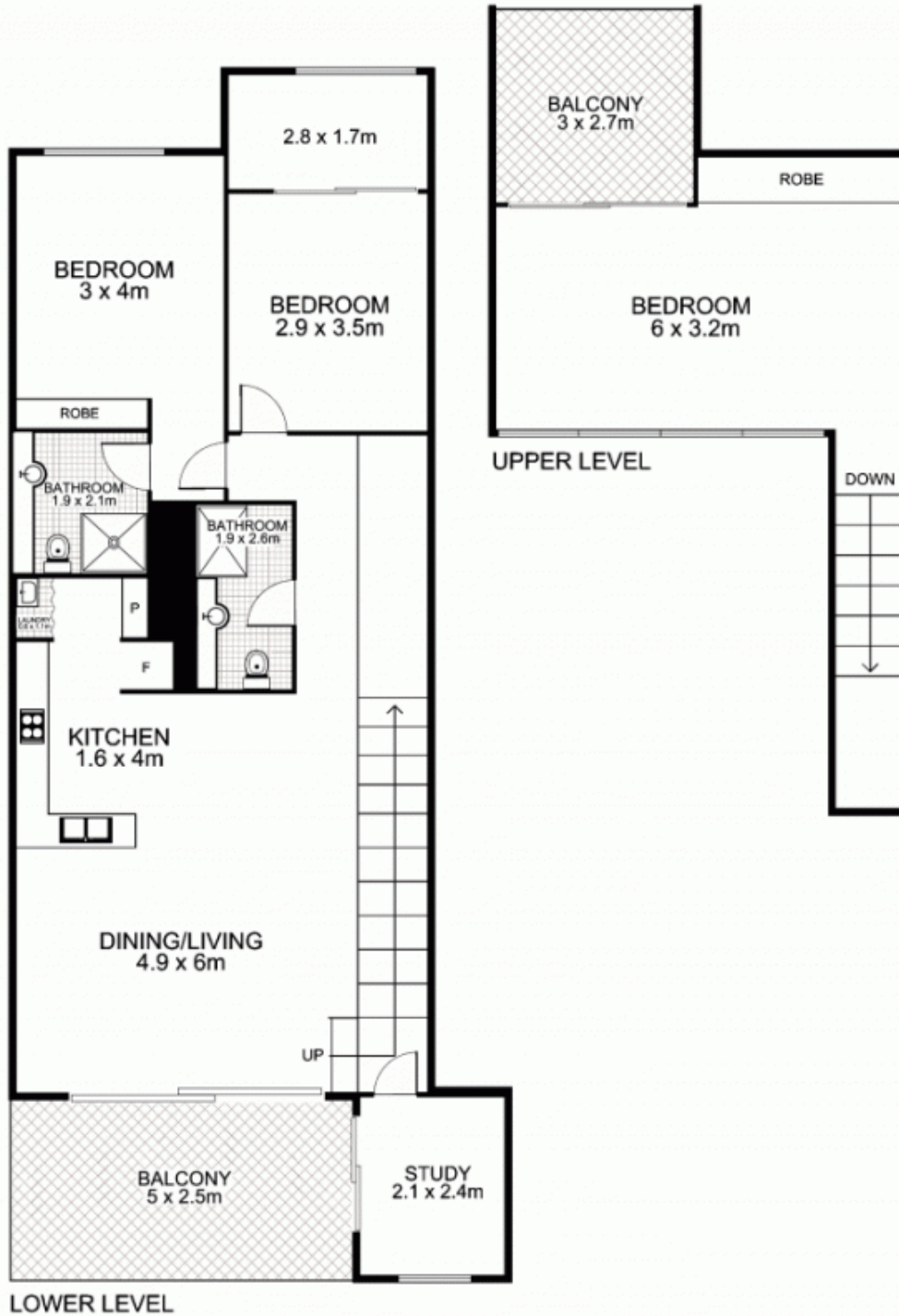
**Sarah Fowell**



 sarah@morton.com.au

**morton.com.au**

**86/20 Eve Street,  
ERSKINEVILLE**



Plans by  
**surroundpix**  
com.au  
1300 30 32 40

This floor plan is intended as a guide only. Layout dimensions are approximate only. No representations or warranties of any nature whatsoever are given or intended. Any person using this information should rely on their own enquiries