



# morton.

**HUNTLEYS COVE** 12 Waruda Place

 3  2  2

Set in the sought after suburb of Huntleys Cove with resort style facilities, we are pleased to offer this immaculately presented townhouse set over three levels, featuring breathtaking water views across the bay to St Josephs College. Including luxury additions this beautiful home is set in manicured gardens moments to the waters edge and surrounding parkland.

- North facing entertainers' terrace on two floors
- Manicured gardens to the rear, stunning water views
- Masters' ensuite with spa bath and separate shower
- Contemporary stone kitchen with SMEG appliances
- Plantation shutters throughout, air-conditioning
- Security Intercom, electric garage door
- Off street parking for four cars, back to base alarm

### View

As advertised or by appointment

### Agent

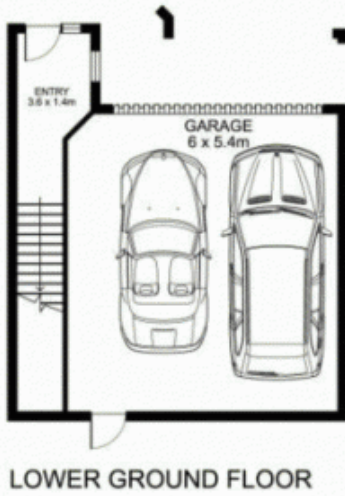
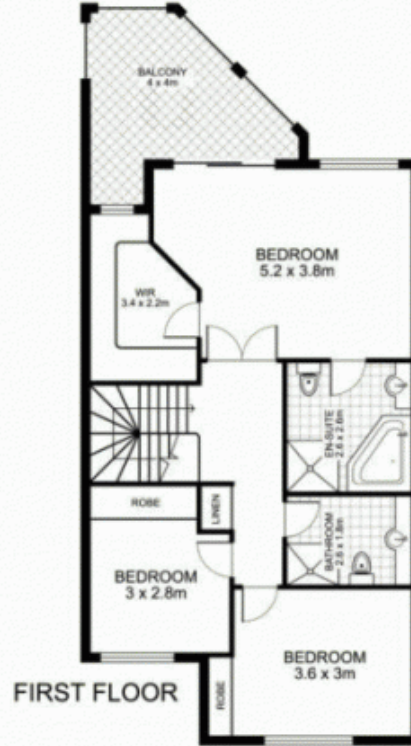
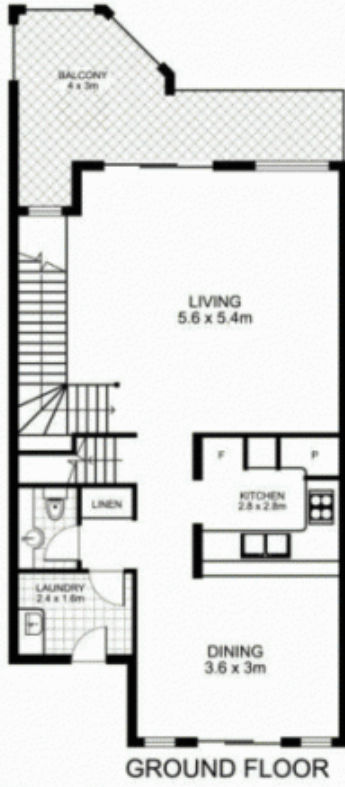
**Sarah Fowell**



 sarah@morton.com.au

[morton.com.au](http://morton.com.au)

**12 Waruda Place,  
HUNTLEYS COVE**



This floor plan is intended as a guide only. Layout dimensions are approximate only. No representations or warranties of any nature whatsoever are given or intended. Any person using this information should rely on their own enquiries.

Plans by  
**surroundpix**  
COMM. PT.  
 1300 30 32 40