



morton.

WOOLLOOMOOLOO 1/27 Palmer Street

 3  2  1

This very generous home provides a modern alternative to a terrace house and is perfect for those who want to be close to the city but not compromise on comfort and space.

- Separate living and dining areas
- Three large bedrooms, main with ensuite
- Chefs kitchen, Smeg appliances
- Lock up garage in security car park
- Courtyard with separate entrance
- Excellent security, reverse cycle a/c

View

As advertised or by appointment

Agent

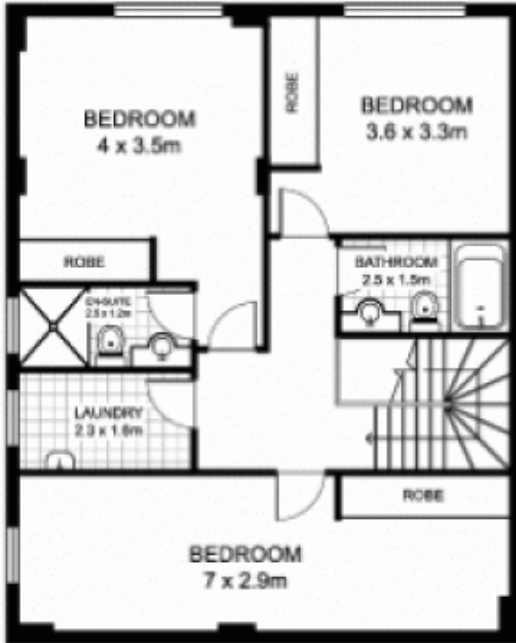
Noel Jenkins

 0410 593 694

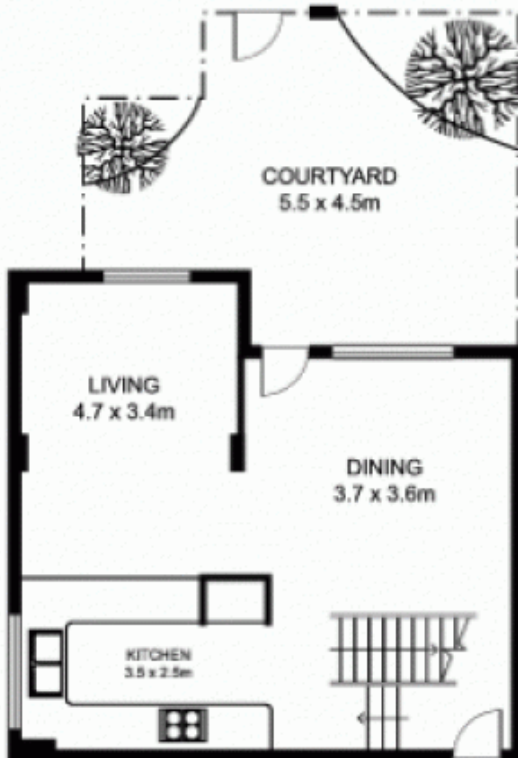
 noel@morton.com.au

morton.com.au

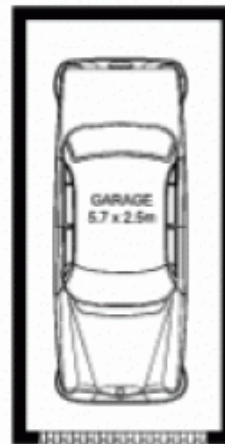
1/27 Palmer Street, WOOLLOOMOOLOO



FIRST FLOOR



GROUND FLOOR



This floor plan is intended as a guide only. Layout dimensions are approximate only. No representations or warranties of any nature whatsoever are given or intended. Any person using this information should rely on their own enquiries