



# morton.

**POTTS POINT** 505/81 Macleay Street

 3  2  2

Enjoy the experience of Sydney's iconic views of City Skyline, Harbour Bridge, Opera House and Botanic Gardens from this exquisitely appointed 2 level inner city apartment in one of Sydney's most desirable buildings.

Located in Potts Point's famous IKON building this apartment reflects and radiates natural light from floor to ceiling windows embellished by the use of innovative architectural design and strategically placed mirrors.

Close to the city, renowned restaurants, exclusive shopping and entertainment venues are also right your doorstep.

- One of IKON's best east/west flow through floorplans boasting 191 sqm plus 30 sqm parking
- Enjoy breathtaking views from all main areas which open out to sunlit balconies
- Beautiful sophisticated décor evoking urban style
- Granite kitchen with Miele stainless steel appliances and breakfast

[morton.com.au](http://morton.com.au)

### View

As advertised or by appointment

### Agent

**Noel Jenkins**

 0410 593 694

 [noel@morton.com.au](mailto:noel@morton.com.au)

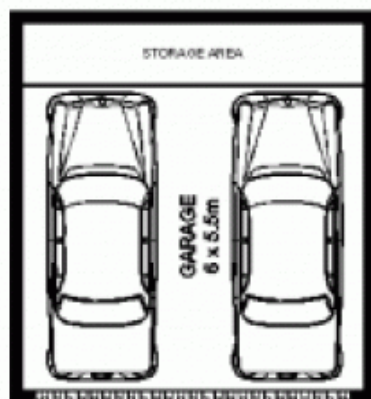
# 505/81 Macleay St, POTTS POINT

SCALE 

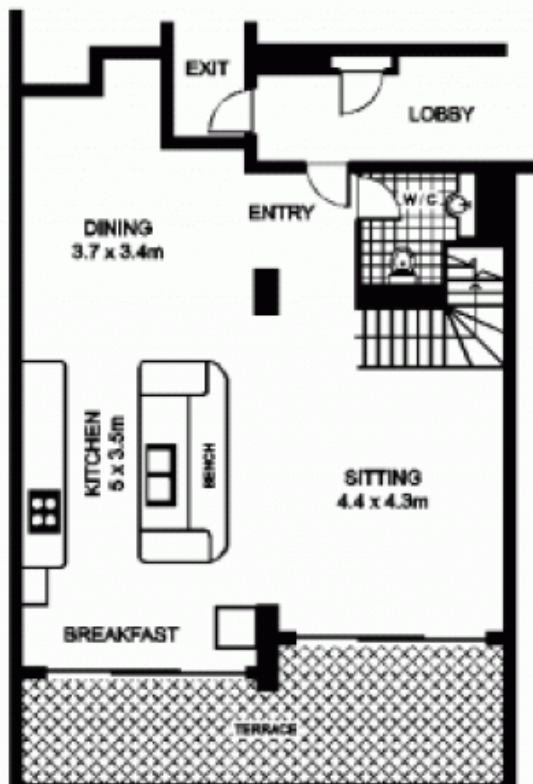


- This floor plan is intended as a guide only
- Layout dimensions are approximate only
- No representations or warranties of any nature whatsoever are given or intended
- Any person using this information should rely on their own enquiries

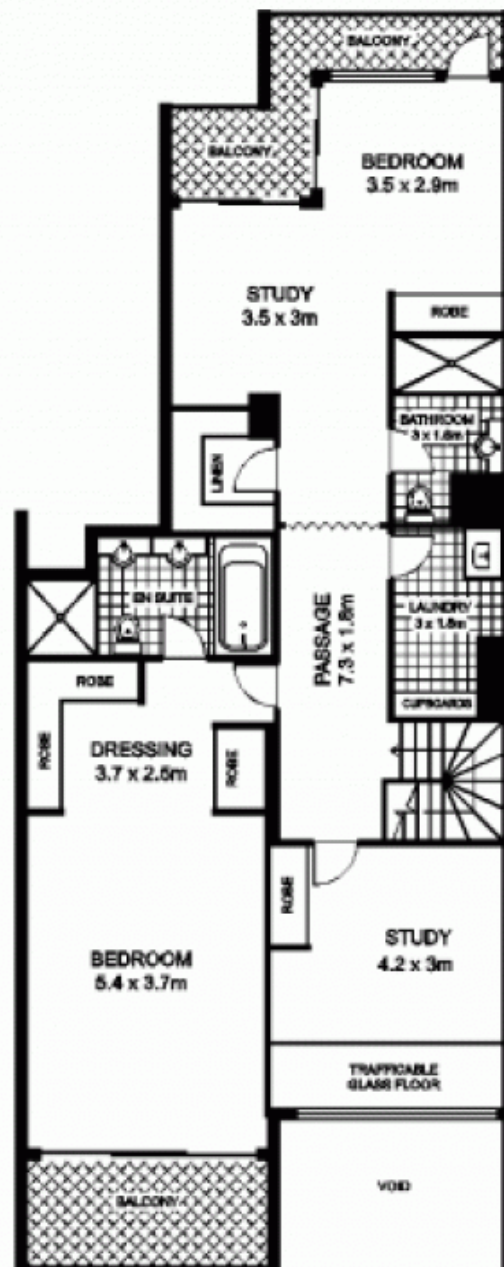
GARAGE



LEVEL P3



LEVEL 1



LEVEL 2