



morton.

Pyrmont 406/8-14 Wharf Crescent

 3  3  3

Unmatched in exclusivity, position or finesse, this breathtaking single level penthouse is without question one of Sydney's finest properties. In a dress circle harbourfront setting that is dominated by unsurpassed panoramic views across the water to the Bridge and city skyline, the vast interiors flow over 300sqm.

- Appointed with the most exacting of designer finishes
- Beautifully crafted for luxury low maintenance living
- Palatial master retreat with marble ensuite and b/ins
- CaesarStone entertainer's kitchen, Miele gas fittings
- Expansive proportions with soaring sculpted ceilings
- Embraced by balconies, large entertaining terrace
- Ducted air conditioning, storage and C-Bus lighting
- In an ultra prestigious boutique peninsula community

View

As advertised or by appointment

Agent

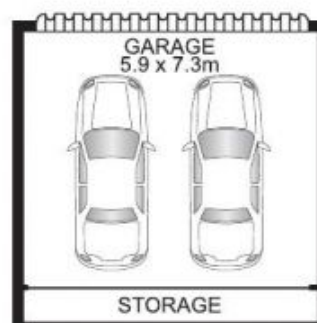
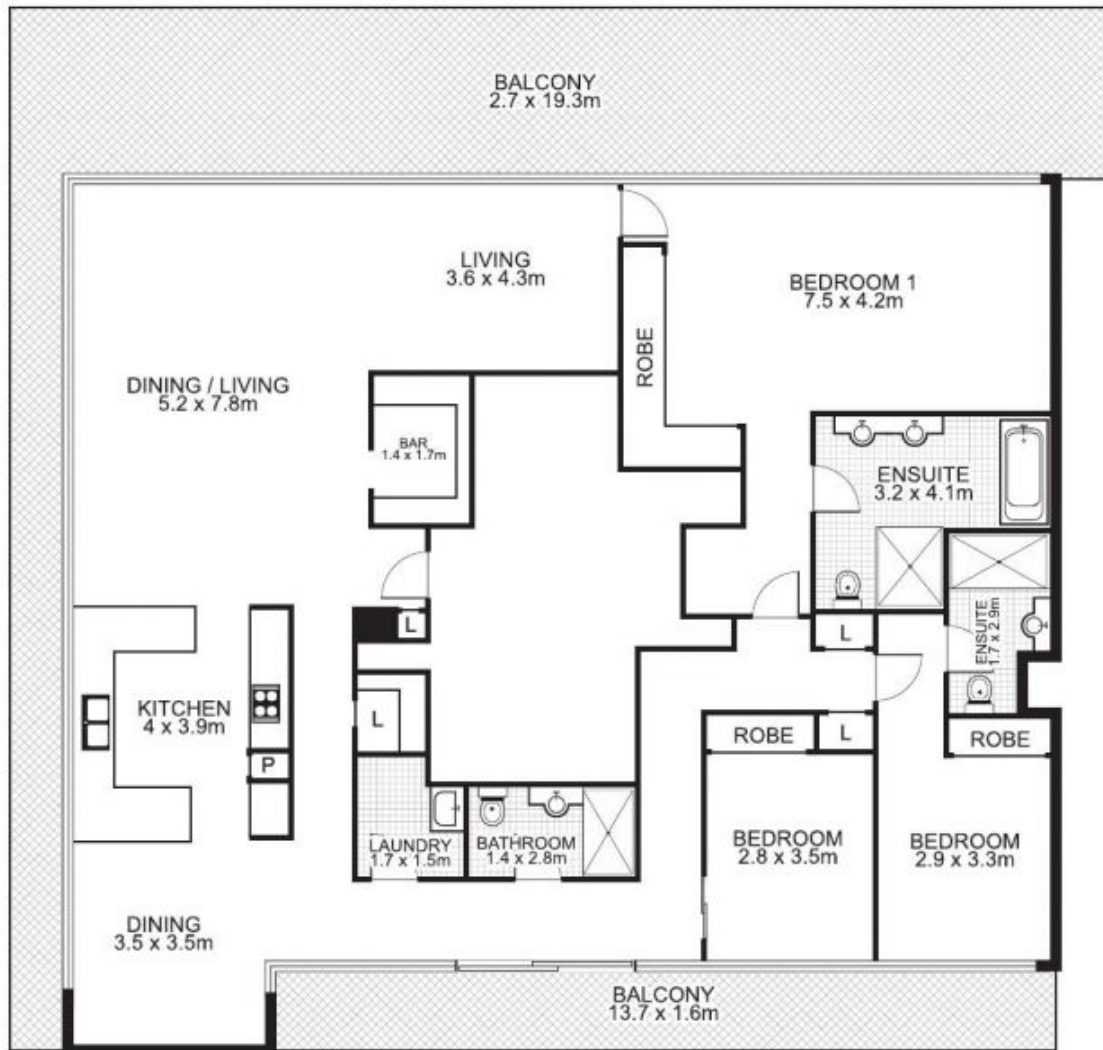
James Crow

 0410 593 057

 james@morton.com.au

morton.com.au

406/8 Wharf Crescent, PYRMONT



This floor plan is intended as a guide only. Layout dimension are approximate only. No representation or warranties of any nature whatsoever are given or intended. Any person using this information should rely on their own enquiries.