



morton.

Pyrmont 246/3 Darling Island Road

 2  2  2

Located on Darling Island's exclusive harbourside peninsula, this open plan two bedroom apartment will suit those seeking space, privacy and exceptional sun lit living areas. Positioned right on the water's edge and spanning across the entire floor, this apartment enjoys expansive views of Sydney Harbour, the Harbour Bridge and city.

- Large open plan lounge and dining with soaring ceilings
- Opens to large balcony ideally suited to indoor/outdoor living
- Integrated kitchen with stone bench tops and Miele appliances
- Master bedroom with walk-through wardrobe and ensuite
- Equally spacious second bedroom with ensuite
- Additional guest powder room
- Reverse cycle dual-zone air conditioning
- Building security with direct lift access
- Secure parking, storage and concierge service
- Excellent facilities include 20 metre pool, gym, spa and sauna

View

As advertised or by appointment

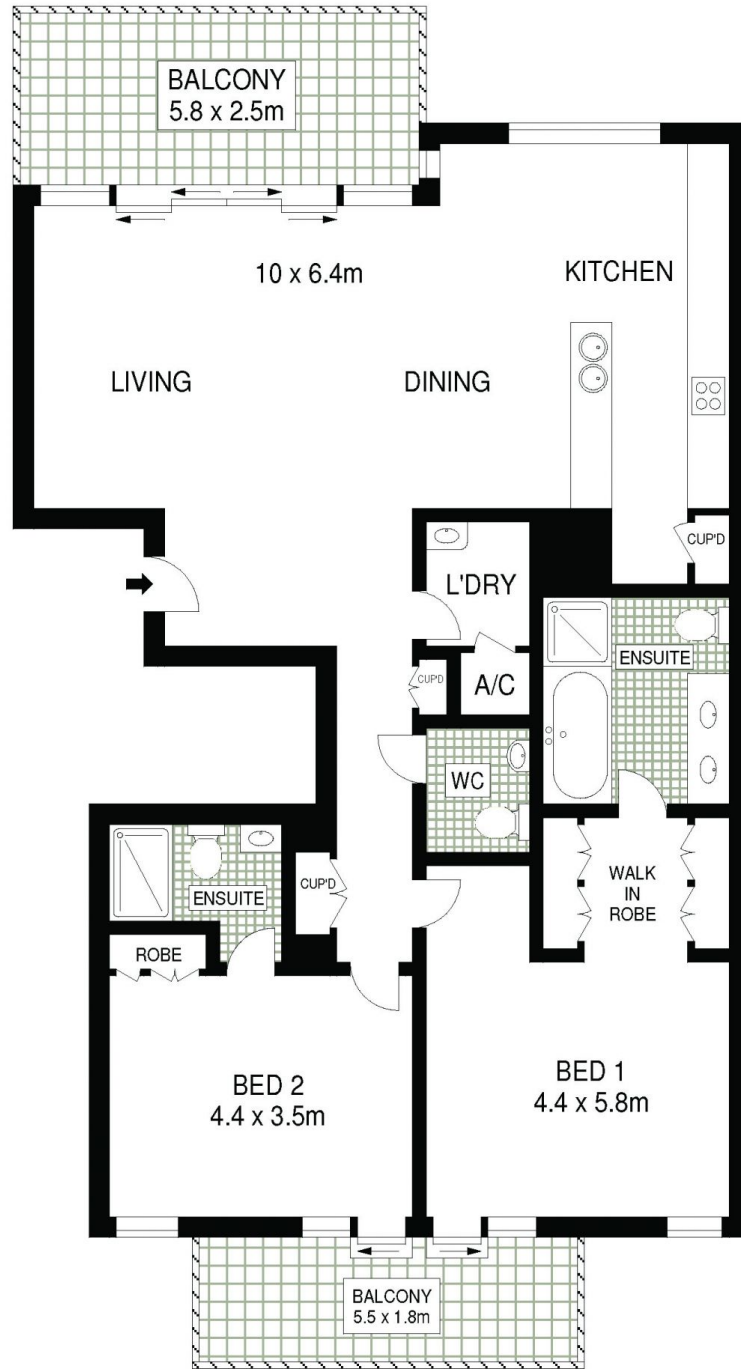
Agent

James Crow

 0410 593 057

 james@morton.com.au

morton.com.au



FOURTH FLOOR

INT : 130m²
EXT : 24m²



246/3 DARLING ISLAND ROAD
PYRMONT



ALL INFORMATION CONTAINED HEREIN IS GATHERED FROM SOURCES WE BELIEVE TO BE RELIABLE. HOWEVER WE CANNOT GUARANTEE ITS ACCURACY AND INTERESTED PERSONS SHOULD RELY ON THEIR OWN ENQUIRIES. DIMENSIONS ARE APPROXIMATE