



morton.

Pyrmont 217/3 Darling Island Road

 3  2  2

Prestigiously perched on the water's edge in what is generally considered to be one of Sydney's most exclusive harbourfront peninsulas, this exquisite residence is a haven of breathtaking distinction. Opening to uninterrupted direct harbour views, this is an upgraded lifestyle offering that is beyond compare.

- An intuitive design enhanced with luxurious appointments
- Soothed by cooling breezes and bathed in ambient light
- Well configured to maximise the flow of space throughout
- Expansive open plan entertaining, sun-washed balcony
- Immaculate gourmet CaesarStone and Miele gas kitchen
- Generous bedrooms, master with ensuite and walk-in robe
- 24hr concierge, heated pool, spa, spacious storage cage
- Ducted air conditioning, dual access and timber floors
- Large side by side parking, elegant mirrored feature wall

View

As advertised or by appointment

Agent

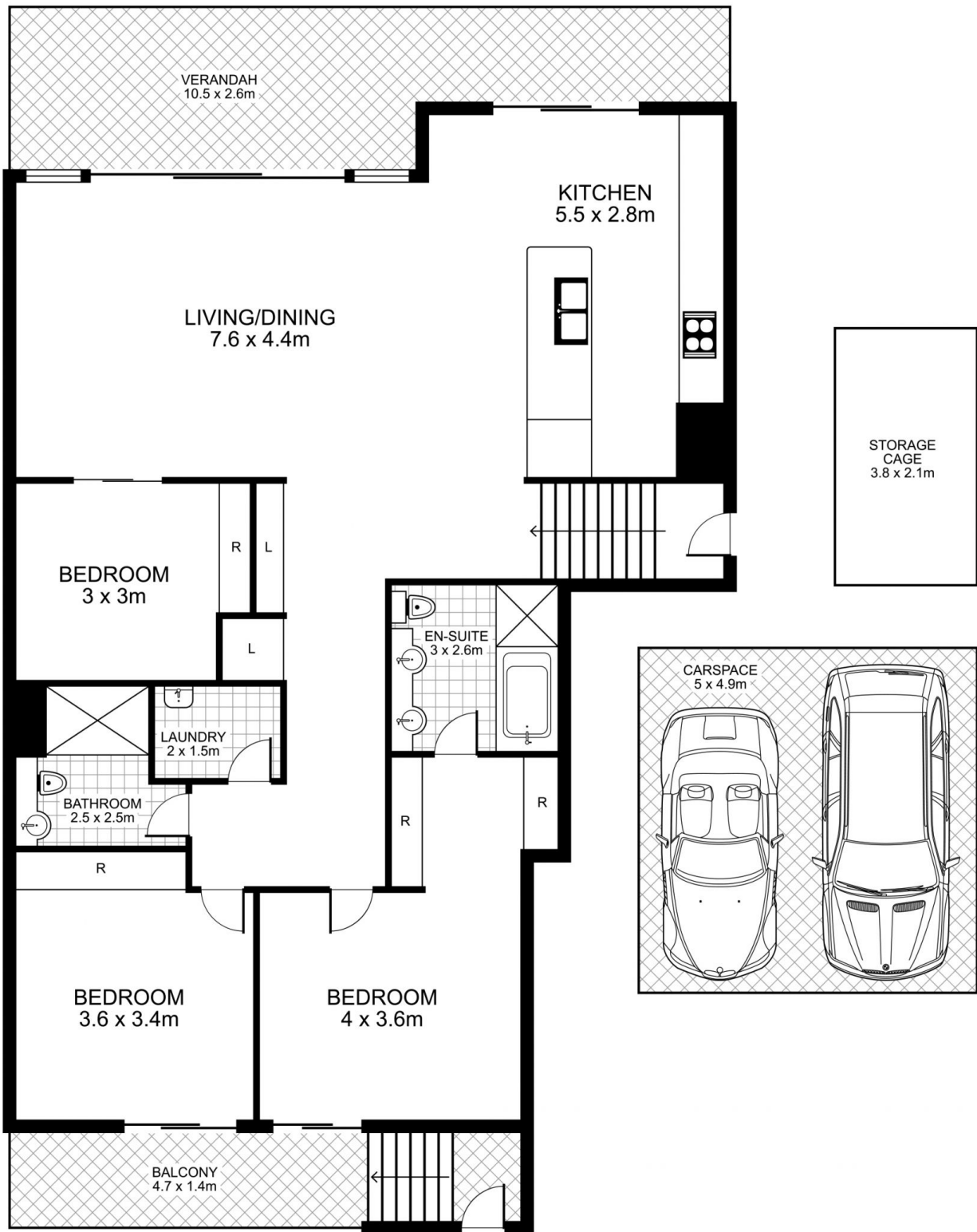
James Crow

 0410 593 057

 james@morton.com.au

morton.com.au

217/3 Darling Island Road, PYRMONT



an is intended as a guide only. Layout dimensions are approximate only. No representations or warranties of any nature are given or intended. Any person using this information should rely on their own enquiries

Plans by