



morton.

Pyrmont 126 Bowman Street

 3  2

Peacefully and privately positioned in one of Sydney's premier harbourside communities, this stunning traditional terrace offers a lifestyle of convenience and substance. In a historic community, the well presented interiors capture superb views across the harbour to Rozelle and Balmain.



- Well proportioned, flowing over three separate levels
- Impressively appointed for understated modern living
- With a choice of formal and casual entertaining areas
- Neat kitchen complete with gas appliances and dishwasher
- Outdoor living with a separate deck and garden courtyard
- Polished timber floors, original fireplaces and high ceilings
- With rear street access, ample storage and balconies

View

As advertised or by appointment

Agents

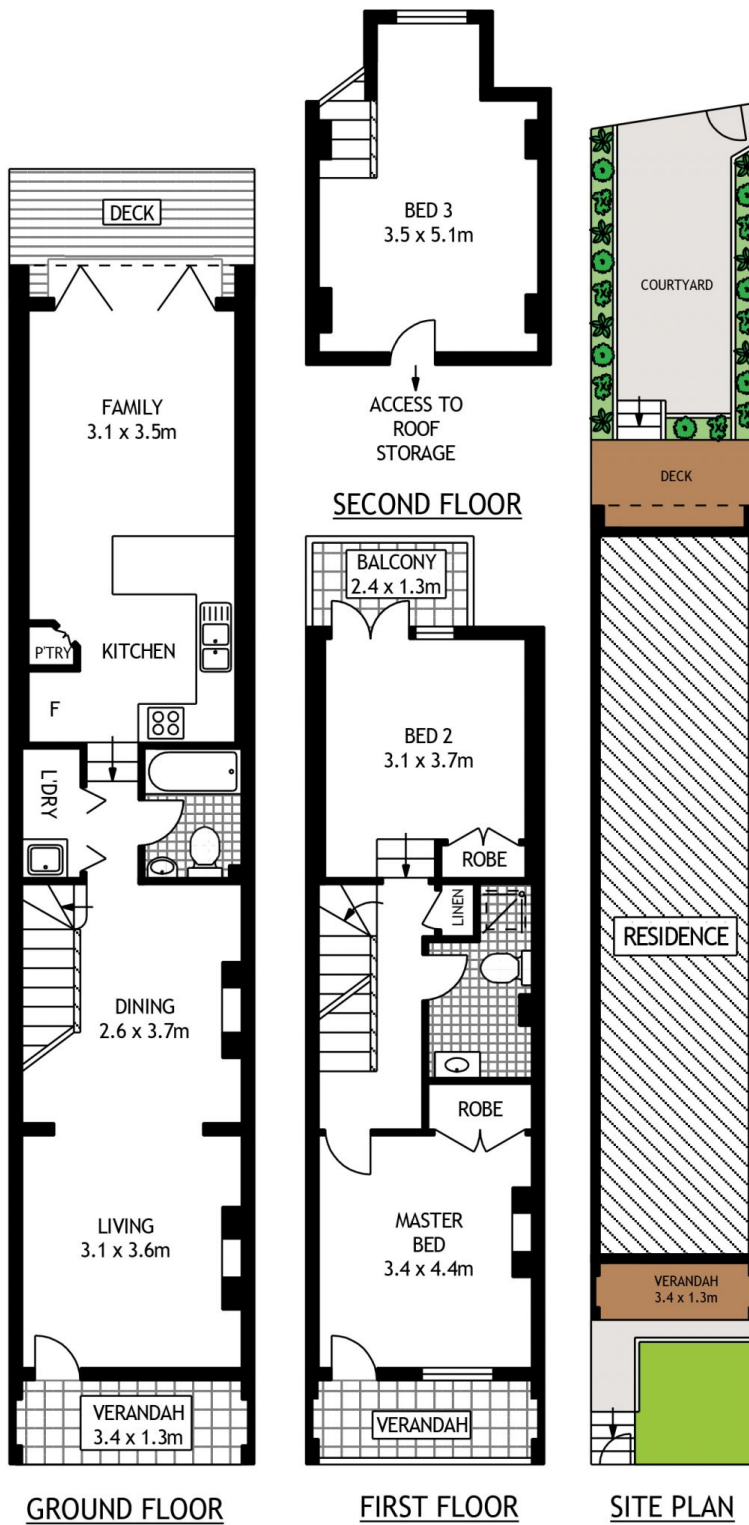
James Crow

 0410 593 057
 james@morton.com.au

Ian Qiu

 0447 696 425
 ian@morton.com.au

morton.com.au



126 BOWMAN STREET

PYRMONT

SCAPE Floor Planning Disclaimer: This floor plan is conceptual only. It is provided for illustrative purposes only and should not be relied upon. We make no guarantees to the correctness of this plan. All interested parties should make and rely on their own enquiries in determining the accuracy of the information contained in this floor plan.