



morton.

Pyrmont G01/1 Distillery Drive

 2
  2
  1

View

As advertised or by appointment

Agent

Ian Qiu

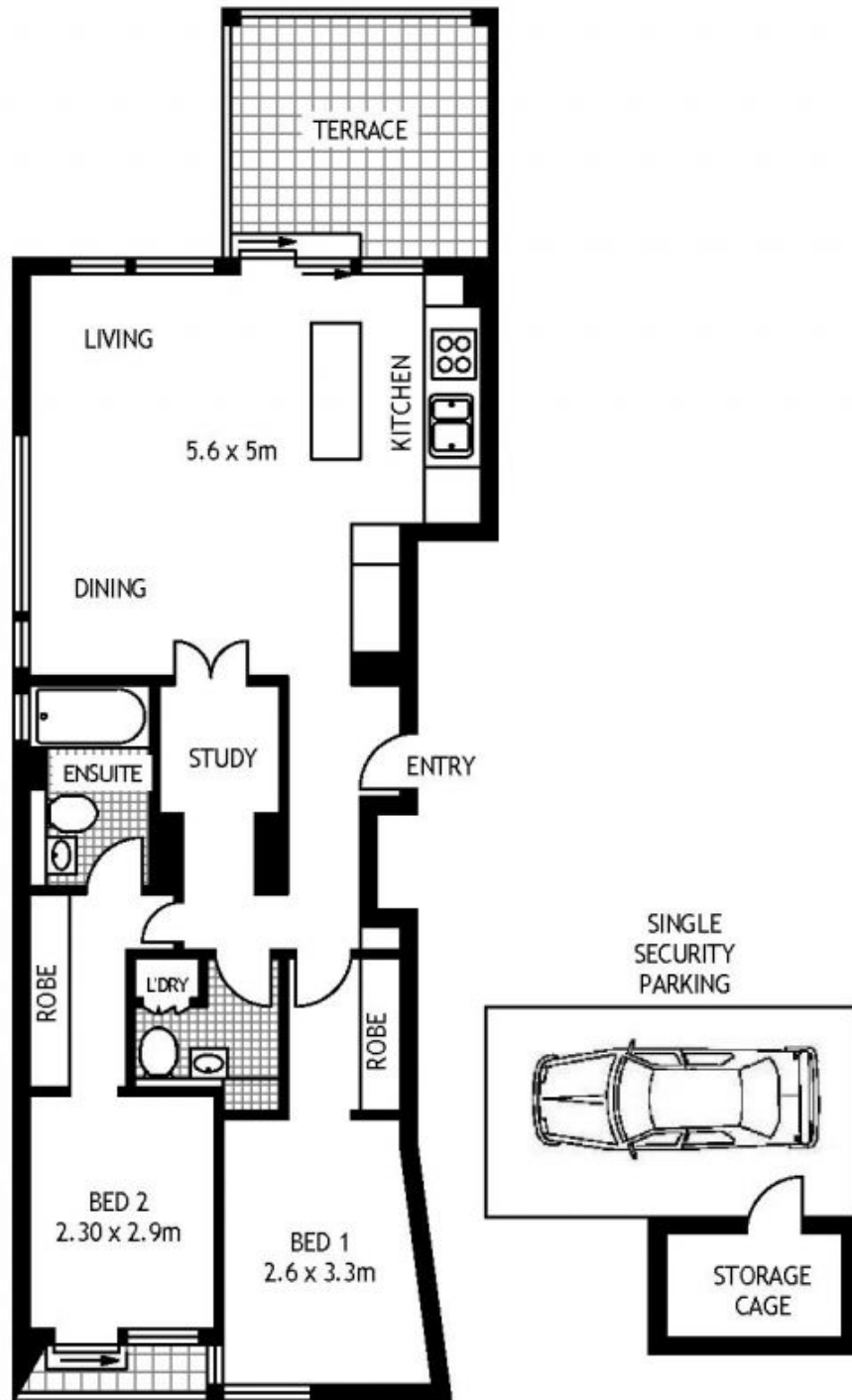
 0447 696 425

 ian@morton.com.au

Privately set in a highly-sought after yet extremely rare corner position at the end of an exclusive cul de sac, this exceptional residence is a home unmatched in quality or outlook. With uninterrupted views across the Anzac Bridge and Blackwattle Bay, this is low maintenance living at its finest.

- Well crafted with an emphasis on contemporary style
- Luxuriously appointed with exquisite designer finishes
- Ideal separation of sleeping and entertaining spaces
- Double bedrooms, built-ins, master has ensuite, balcony
- Open plan living flows to a protected barbecue terrace
- Storage cage, double glazing, ducted air conditioning
- Self-contained study room and CaesarStone gas kitchen
- With an environmentally sustainable 'green star' rating

morton.com.au



G011 DISTILLERY DRIVE

PYRMONT

SCAPE Floor Planning Disclaimer: This floor plan is conceptual only. It is provided for illustrative purposes only and should not be relied upon. We make no guarantees to the correctness of this plan. All interested parties should make and rely on their own enquiries in determining the accuracy of the information contained in this floor plan.