



morton.

Pyrmont 712/50 Murray Street

 3  2  1

Architecturally designed to emulate a window to the world, this unique 3 bedroom 'round-house' apartment at the eminent One Darling Harbour building boasts dazzling panoramic views over Sydney Harbour and Cockle Bay. Generous home-like proportions, immaculately presented interiors and 5 star resort facilities ensure a desirable city lifestyle within Sydney's most vibrant harbour-side precinct.

- Coveted 7th floor corner apartment, with a sunlit north facing 156sqm layout
- Rare circular combined living area, featuring floor-to-ceiling windows
- Two balconies, perfectly placed for spectacular harbour and city views
- Gourmet kitchen with island breakfast bar and granite benchtops
- Spacious bedrooms, all with built-ins and balcony access
- Master bedroom ensuite with twin vanities, separate bath and shower
- Well appointed main bathroom and additional guest

View

As advertised or by appointment

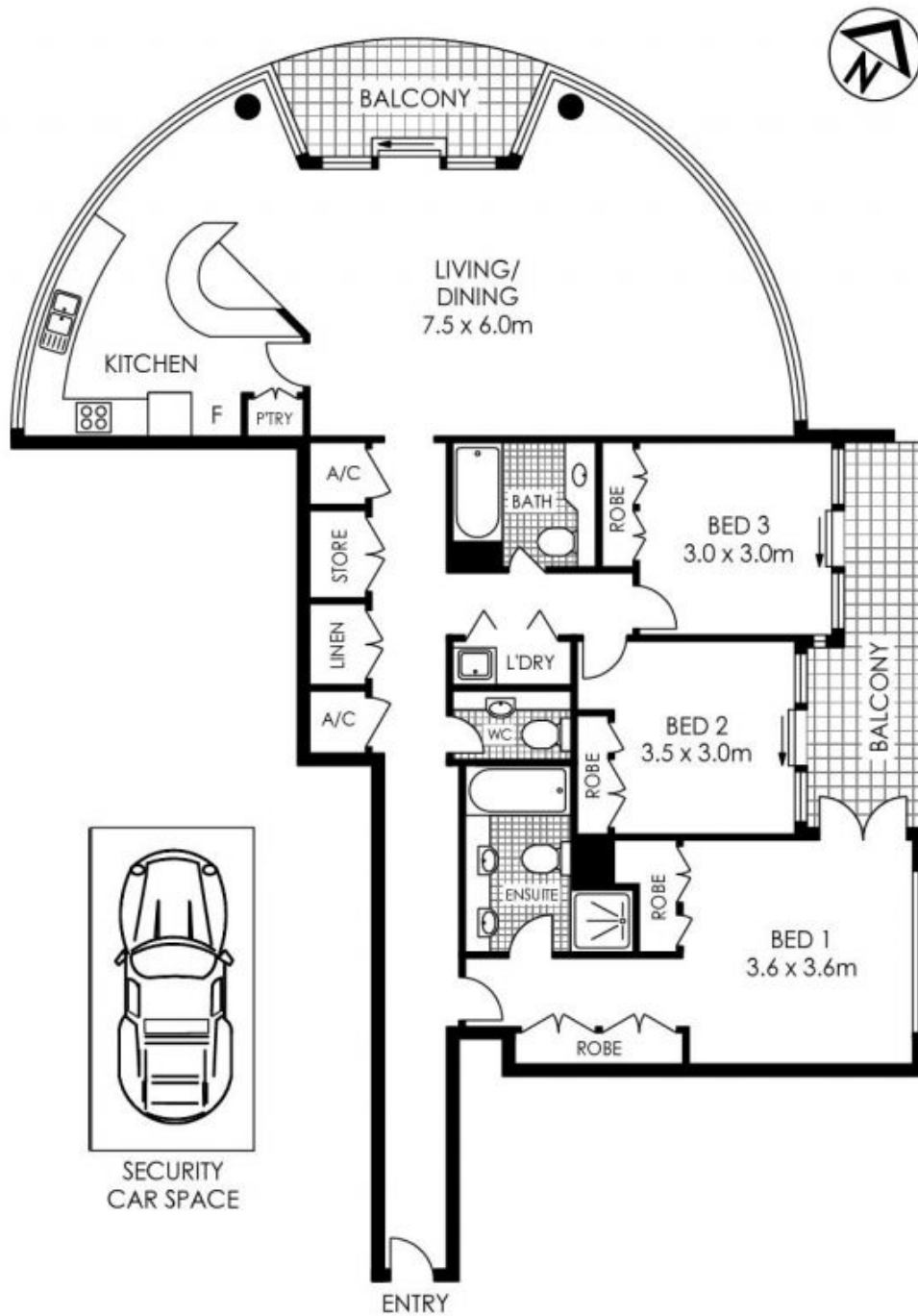
Agent

James Crow

 0410 593 057

 james@morton.com.au

morton.com.au



712/50 Murray Street, Pyrmont

The information above is provided in good faith and has been provide to us from a variety of sources. We have not verified whether the information is accurate and do not have any belief one way or other in its accuracy. We do not accept any responsibility to any person for its accuracy and do no more than pass it on. All interested parties should rely on their own inquiries in order to determine whether or not this information is in fact accurate.