



morton.

PYRMONT 126 Bowman Street

 3  2

Peacefully and privately positioned in one of Sydney's premier harbourside communities, this stunning traditional terrace offers a lifestyle of convenience and substance. In a historic community, the well presented interiors capture superb views across the harbour to Rozelle and Balmain.

- Well proportioned, flowing over three separate levels
- Impressively appointed for understated modern living
- With a choice of formal and casual entertaining areas
- Neat kitchen complete with gas appliances, dishwasher
- Outdoor living with a separate deck, garden courtyard
- Polished timber floors, original fireplaces, high ceilings
- With rear street access, ample storage and balconies

View

As advertised or by appointment

Agent

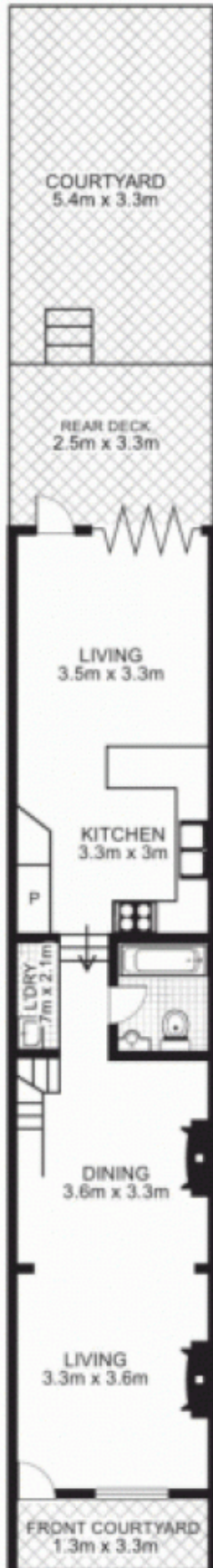
James Crow

 0410 593 057

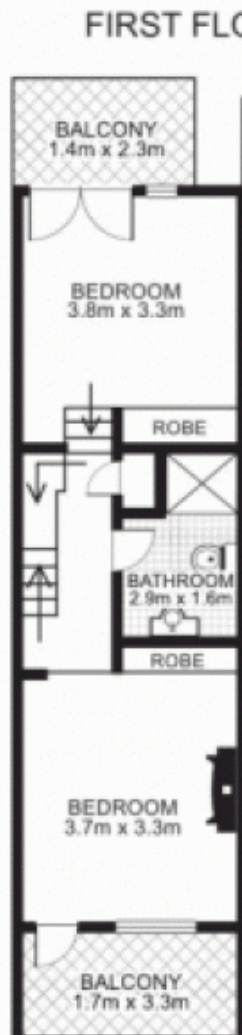
 james@morton.com.au

morton.com.au

126 Bowman Street, PYRMONT



GROUND FLOOR



FIRST FLOOR

SECOND FLOOR



This floor plan is intended as a guide only. Layout dimensions are approximate only. No representation or warranties of any nature whatsoever are given or intended. Any person using this information should rely on their own enquiries.