



morton.

Pyrmont 351/3 Darling Island Road

 3  3  3

Undoubtedly one of the finest penthouse apartments to be offered in Sydney. Located on the northern tip of Darling Island's waterfront enclave this sublime apartment of grand proportions enjoys point blank views of the Harbour Bridge, city and harbour foreshore.

- Stunningly appointed to offer an unsurpassed luxurious lifestyle
- Enormous living with soaring pitched cathedral ceilings
- Floor to ceiling glass frames your harbour backdrop
- Entertainers terrace + rooftop terrace with 360 degree views
- Master bedroom w/walk through wardrobes & travertine ensuite
- Excellent security + private lift entry lobby
- Central C-Bus controls for lighting and zoned air conditioning
- Concierge service, European linen window coverings
- Under cover secure parking with direct lift access
- Health club with pool, gym, spa and sauna

View

As advertised or by appointment

Agent

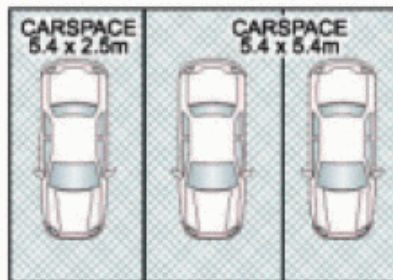
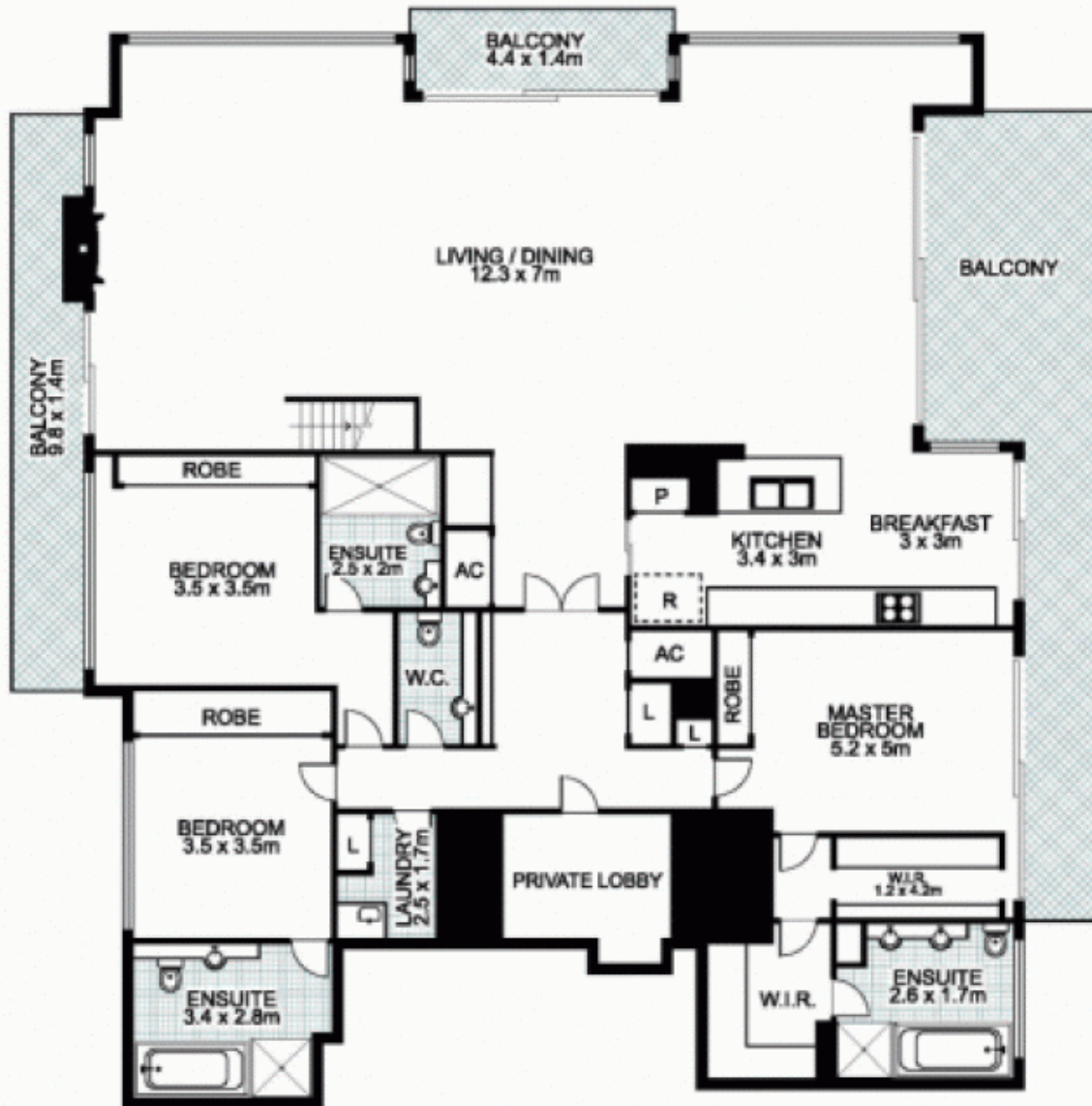
James Crow

 0410 593 057

 james@morton.com.au

morton.com.au

3 Darling Island Road, PYRMONT



This floor plan is intended as a guide only. Layout dimension are approximate only. No representation or warranties of any nature whatsoever are given or intended. Any person using this information should rely on their own enquiries.