

morton.

LEWISHAM 42 Victoria Street

 3  2  1

Effortlessly balancing period grace and designer style with an exacting attention to detail, this traditional c1891 Victorian terrace has been immaculately refurbished throughout for ultra contemporary luxury living. Occupying a prized corner position, this stunning freestanding residence is a home of rare quality.

- Immaculately presented with the finest of finishes
- Choice of formal and casual entertaining options
- Generous master suite complete with Juliet balcony
- Cutting edge CaesarStone kitchen, gas appliances
- Stunning north facing rear garden with feature wall
- Formal lounge could be a potential fourth bedroom
- With desirable rear lane access to a single garage
- Polished floors, soaring ceilings, period appointments
- Italian travertine floors, sun washed barbecue deck
- European laundry, skylight, storage and guest w/c

View

As advertised or by appointment

Agent

Sarah Fowell

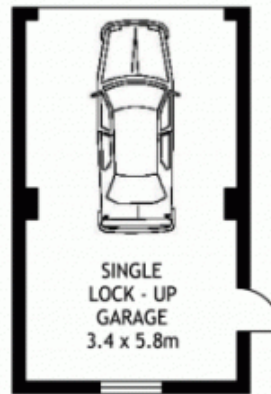
 0437 492 129

 sarah@morton.com.au

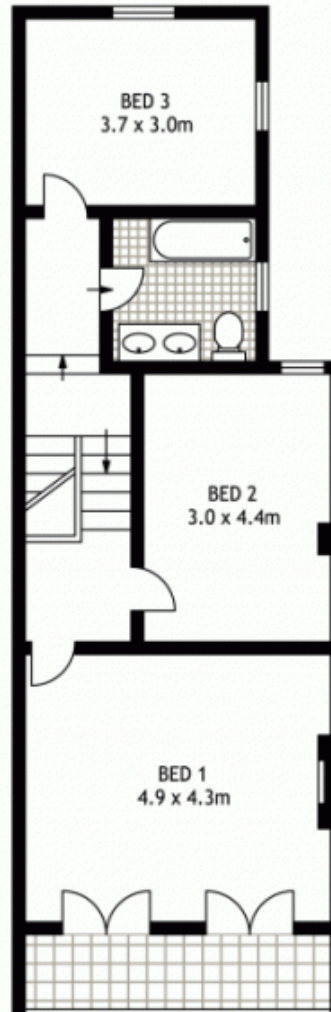
morton.com.au



GROUND FLOOR



GROUND FLOOR



FIRST FLOOR



42 VICTORIA STREET

LEWISHAM

SCAPE Floor Planning Disclaimer: This floor plan is conceptual only. It is provided for illustrative purposes only and should not be relied upon. We make no guarantees as to the correctness of this plan. All interested parties should make and rely on their own enquiries in determining the accuracy of the information contained in this floor plan.