



morton.

CHIPPENDALE 45/39 Dangar Place

 2  1  2

Quietly set in one of the inner city's most sought-after enclaves just a short stroll to Newtown's King Street and minutes to the heart of the city, this inviting residence presents an affordable opportunity for the investor, professional couple or first time buyer to enter a premier community.

- Well presented with scope for further improvements
- Possibility of offering an impressive rental return
- Rare chance to possess two inner city parking spaces
- Open plan lounge and dining area flows to a balcony
- Both bedrooms come with mirrored built-in wardrobes
- Original kitchen has an electric stove, tiled splashbacks
- Internal laundry, intercom security, low maintenance

View

As advertised or by appointment

Agent

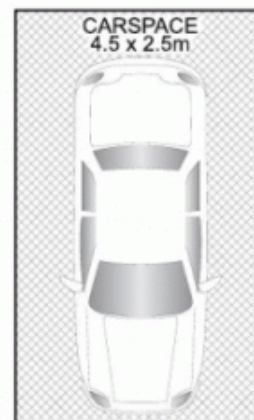
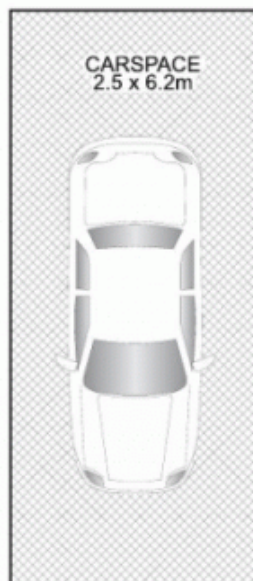
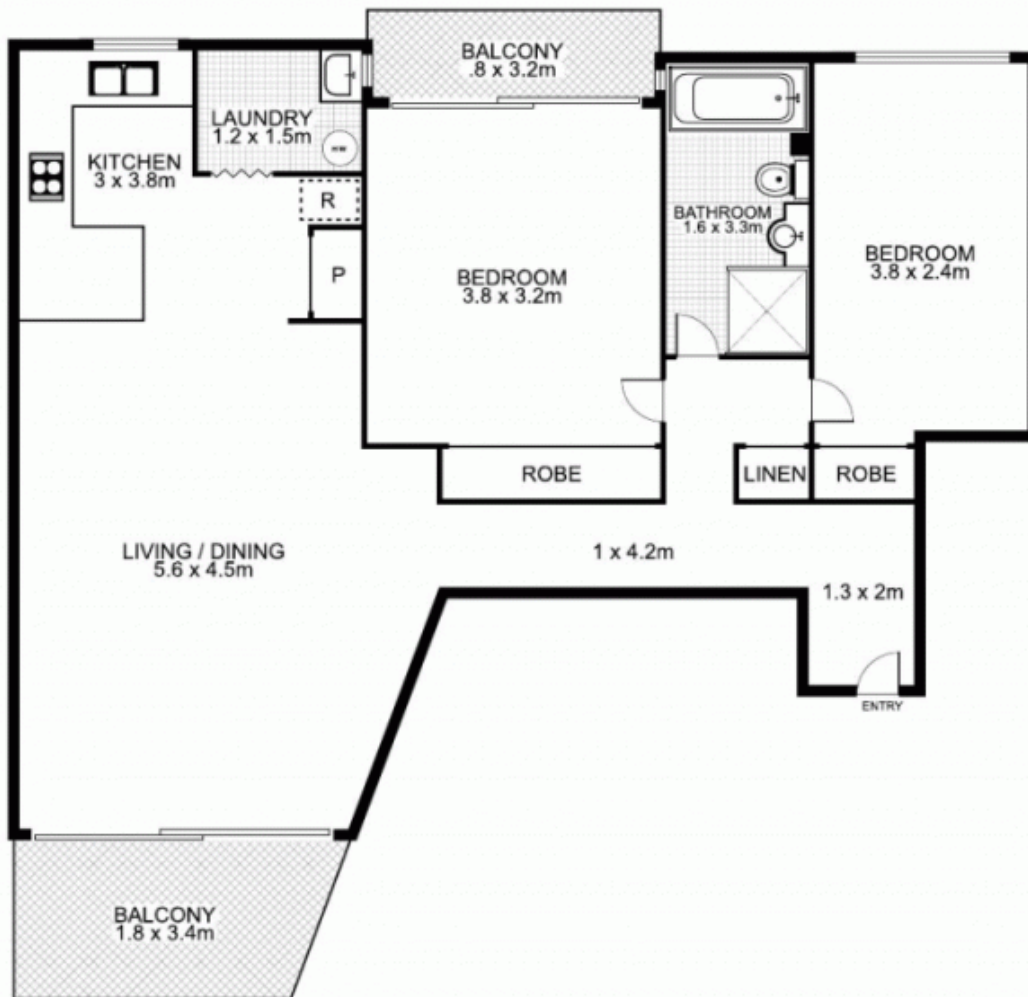
Sarah Fowell

 0437 492 129

 sarah@morton.com.au

morton.com.au

45/39 Dangar Place, CHIPPENDALE



This floor plan is intended as a guide only. Layout dimension are approximate only. No representation or warranties of any nature whatsoever are given or intended. Any person using this information should rely on their own enquiries.