



morton.

PYRMONT 603/320-380 Harris Street

 3  3  2

Set in what is undoubtedly one of Pyrmont's most exclusive residential communities, this exceptional dual level penthouse apartment presents a cutting-edge lifestyle of grace and sophisticated elegance. Invitingly private and surprisingly peaceful, panoramic views stretch across the city skyline.

- Impeccably styled with the finest of modern finishes
- Well proportioned living and dining opens to the city view
- Welcoming master with built-ins, ensuite & private courtyard
- Equally spacious 2nd & 3rd bedrooms with built-ins
- Both access large private timber finished outdoor entertaining
- Flawless designer living for the discerning purchaser
- Deluxe kitchen with granite benches, Miele gas fittings
- Chic bathrooms, main bathroom with bath, guest powder room
- Study with built-in work station
- Polished timber floors, ducted air conditioning
- On site building management
- With a magnificent communal landscaped roof garden

View

As advertised or by appointment

Agent

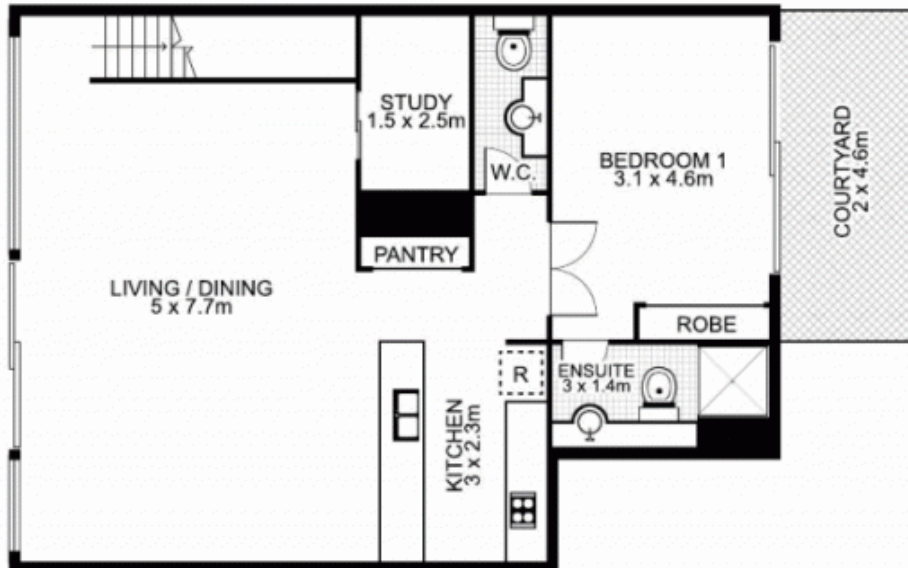
James Crow

 0410 593 057

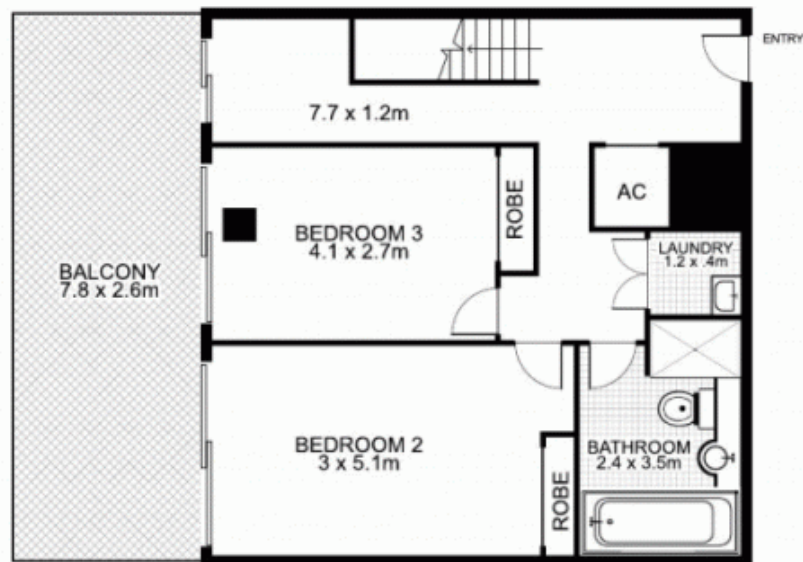
 james@morton.com.au

morton.com.au

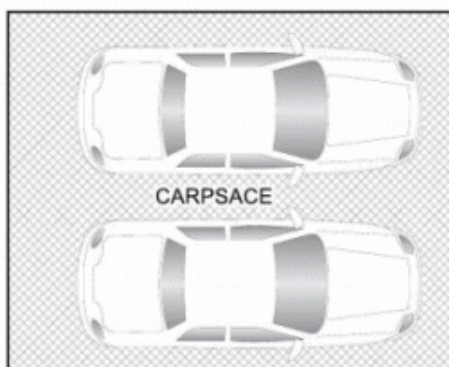
603/320 Harris Street, PYRMONT



FIRST FLOOR



GROUND FLOOR



Plans by
surroundpix
com.au
1300 30 32 40

This floor plan is intended as a guide only. Layout dimension are approximate only. No representation or warranties of any nature whatsoever are given or intended. Any person using this information should rely on their own enquiries.