



morton.

PYRMONT D905/24-26 Point Street

 3  2  2

Undoubtedly located in one of the most desirable positions on the northern Pyrmont peninsula this full brick linear apartment, positioned high on an elevated cul-de-sac, enjoys majestic water and city skyline views.

- Awash with the light of a coveted northern aspect
- Privately positioned in a premier peninsula enclave
- Immaculately presented, quality finishes throughout
- Open plan lounge/dining, high ceilings, harbour backdrop
- Sleek kitchen has Miele gas appliances, granite benches
- Generous double bedrooms have built-ins, master with ensuite
- Flows to a vast 30m² entertaining terrace with city views
- Excellent storage, air conditioning, building security
- Enormous storeroom and secure side by side parking
- Exceptional floor plan with balconies off front & rear of property
- 25 metre lap pool and gym

View

As advertised or by appointment

Agent

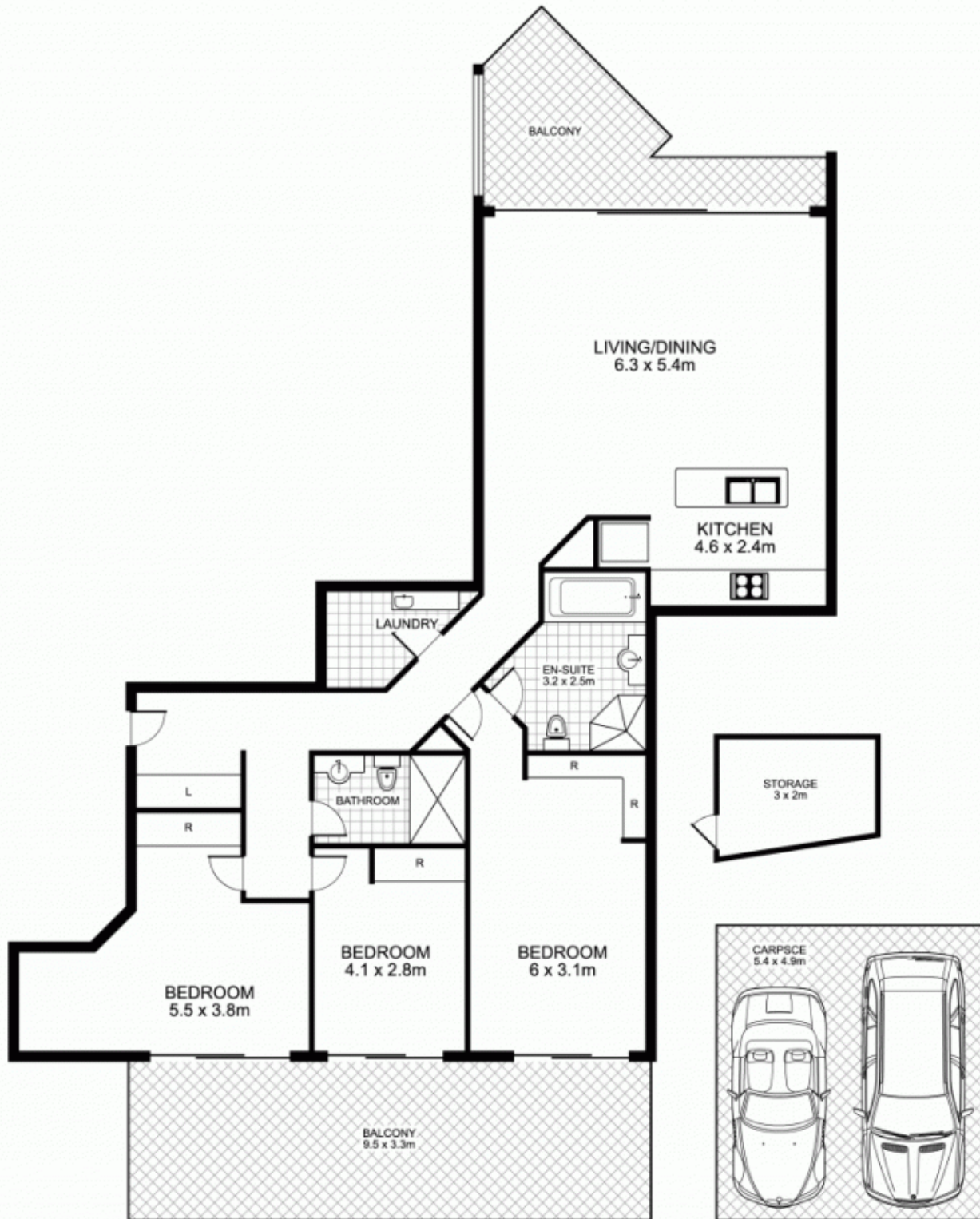
James Crow

 0410 593 057

 james@morton.com.au

morton.com.au

D905/24-26 Point Street, PYRMONT



This floor plan is intended as a guide only. Layout dimensions are approximate only. No representations or warranties of any nature whatsoever are given or intended. Any person using this information should rely on their own enquiries



Plans by
surroundpix
icom.au
1300 30 32 40