



morton.

Pyrmont Level Penthouse/2/243 Pyrmont Street

 3  3  2

Occupying an incredibly private and peaceful position atop one of Sydney's most iconic heritage buildings, this exceptional dual level penthouse presents a rare opportunity to enter an exclusive community. Effortlessly balancing historic grace and contemporary style, this is a residence of unquestionable appeal.

- Breathtaking panoramic aspect across the city skyline
- Westward views across Blackwattle Bay, Anzac Bridge
- Flooded with both morning and afternoon sunshine
- Elegantly presented with the finest of appointments
- Palatial 110sqm exclusive use BBQ entertaining terrace
- Spacious master complete with ensuite, views, walk-in
- A selection of formal/informal lounge and dining areas
- Superior Miele induction kitchen with granite benches
- Pool, gym, spa, sauna, 24 hour concierge and security
- Additional guest powder room
- Parquetry floors, skylights, ducted air con, express lift
- Excellent executive short term rental opportunity

View

As advertised or by appointment

Agent

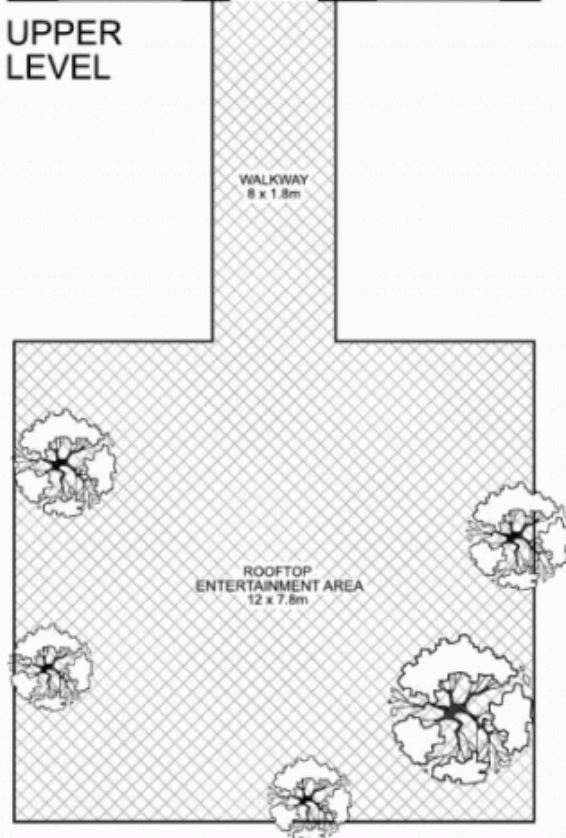
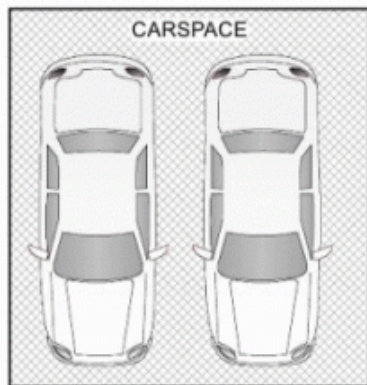
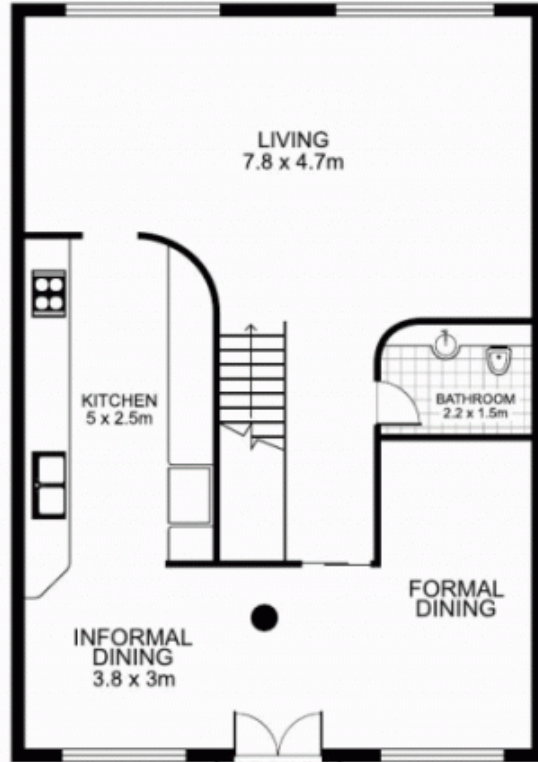
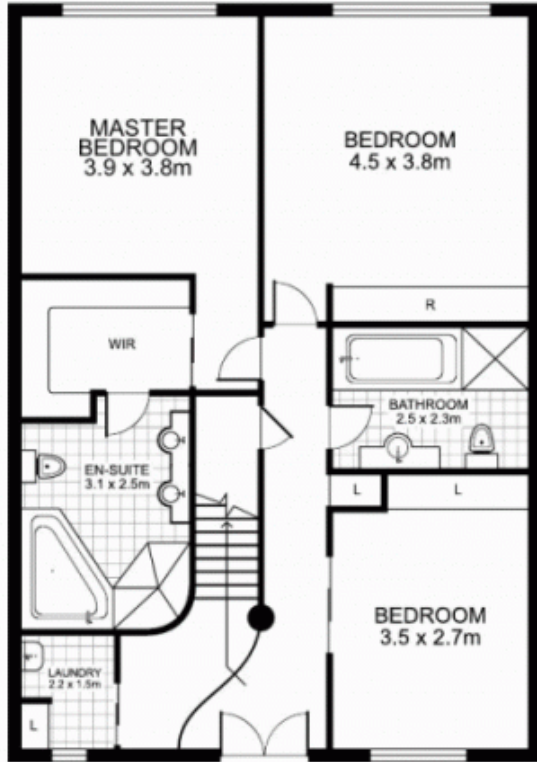
James Crow

 0410 593 057

 james@morton.com.au

morton.com.au

2/243 Pyrmont Street, PYRMONT



Plans by
surroundpix
 lcom.au
 1300 30 32 40

This floor plan is intended as a guide only. Layout dimensions are approximate only. No representations or warranties of any nature whatsoever are given or intended. Any person using this information should rely on their own enquiries