



# morton.

**PYRMONT** 244/3 Darling Island Road

 2  2  2

Located on Darling Island's exclusive harbourside peninsula, this open plan two bedroom apartment will suit those seeking space, privacy and exceptional finishes. Positioned on the water's edge and spanning across the entire floor, this apartment enjoys expansive views of Sydney Harbour, the city skyline and Pyrmont's historic finger wharves.

- Large open plan lounge and dining with soaring ceilings
- Opens to large balcony ideally suited to indoor/outdoor living
- Fantastic natural light throughout
- Polished timber floors
- Integrated kitchen with stone bench tops and Miele appliances
- King sized bedrooms with superbly crafted ensuites and built-ins
- Both bedrooms access additional balcony with Harbour backdrop
- Additional guest powder room
- Reverse-cycle dual-zone air conditioning
- Automated exterior sun screens

[morton.com.au](http://morton.com.au)

#### View

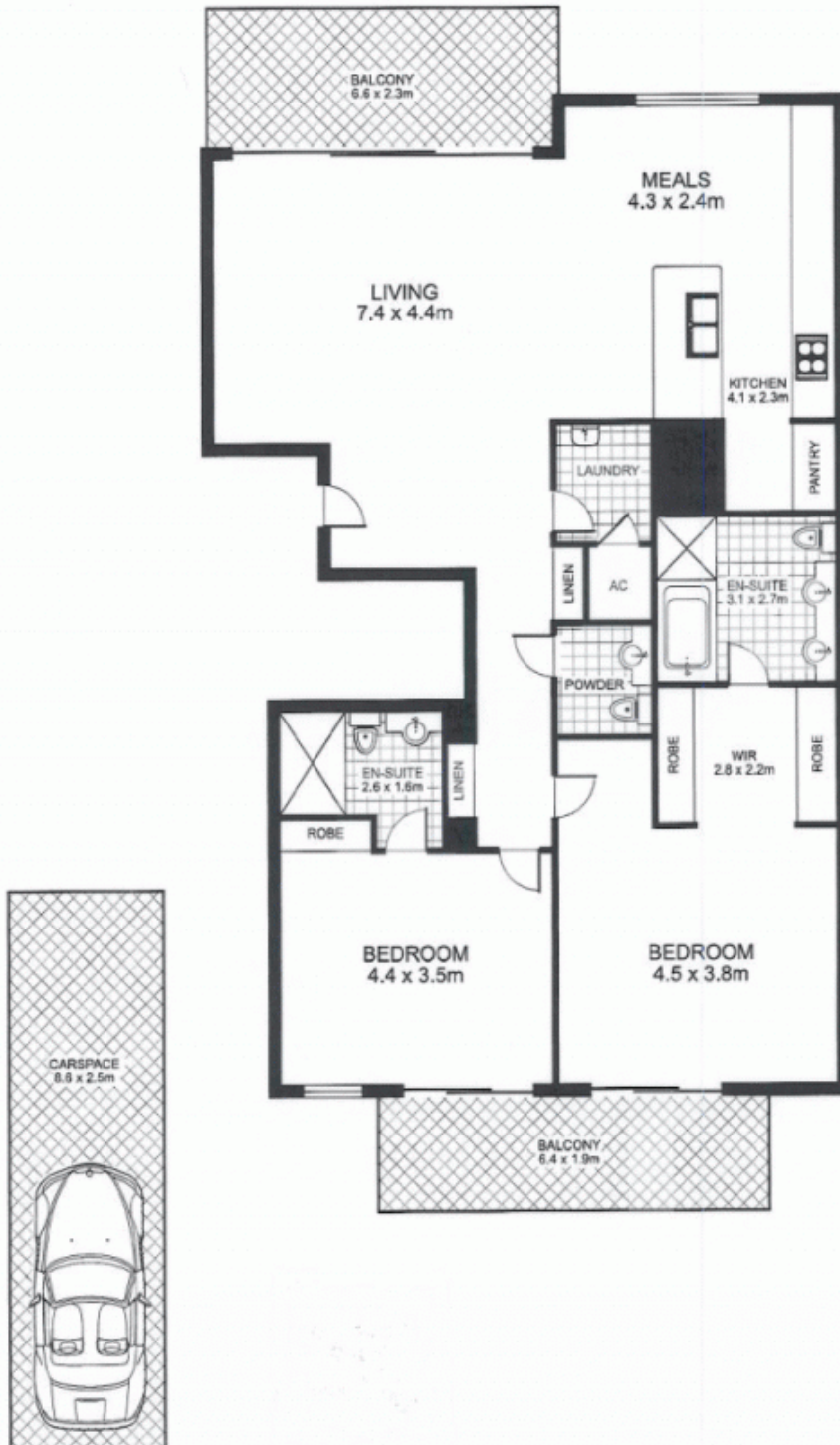
As advertised or by appointment

#### Agent

**James Crow**

 0410 593 057

 [james@morton.com.au](mailto:james@morton.com.au)



Plans by  
**surroundpix**  
 .com.au  
 1300 30 32 40

This floor plan is intended as a guide only. Layout dimensions are approximate only. No representations or warranties of any nature whatsoever are given or intended. Any person using this information should rely on their own enquiries