



morton.

ROZELLE 501/28 Warayama Place

 2  2  2

This magnificent apartment is located at 'Crestview' in Balmain Shore's waterfront complex and boasts the largest floor plan for a two bedroom in the building. Situated high up on level five, and occupying a top floor position, this property offers open plan living with expansive water views. This is the ideal property for you to enjoy the convenience of low maintenance living so close to the CBD.

- Two large bedrooms with built-in wardrobes
- Ducted air-conditioning
- Two secure undercover side by side car spaces
- Large entertainers' balcony with gas bayonet
- Spacious open plan living and dining
- Contemporary kitchen with granite bench tops and pantry
- Stainless steel appl inc. gas cook top, rangehood and dishwasher
- Master bedroom features ensuite and built-in wardrobes
- Main bathroom with bath tub
- Internal laundry and large linen closet
- Security building with intercom, lift and onsite building

morton.com.au

View

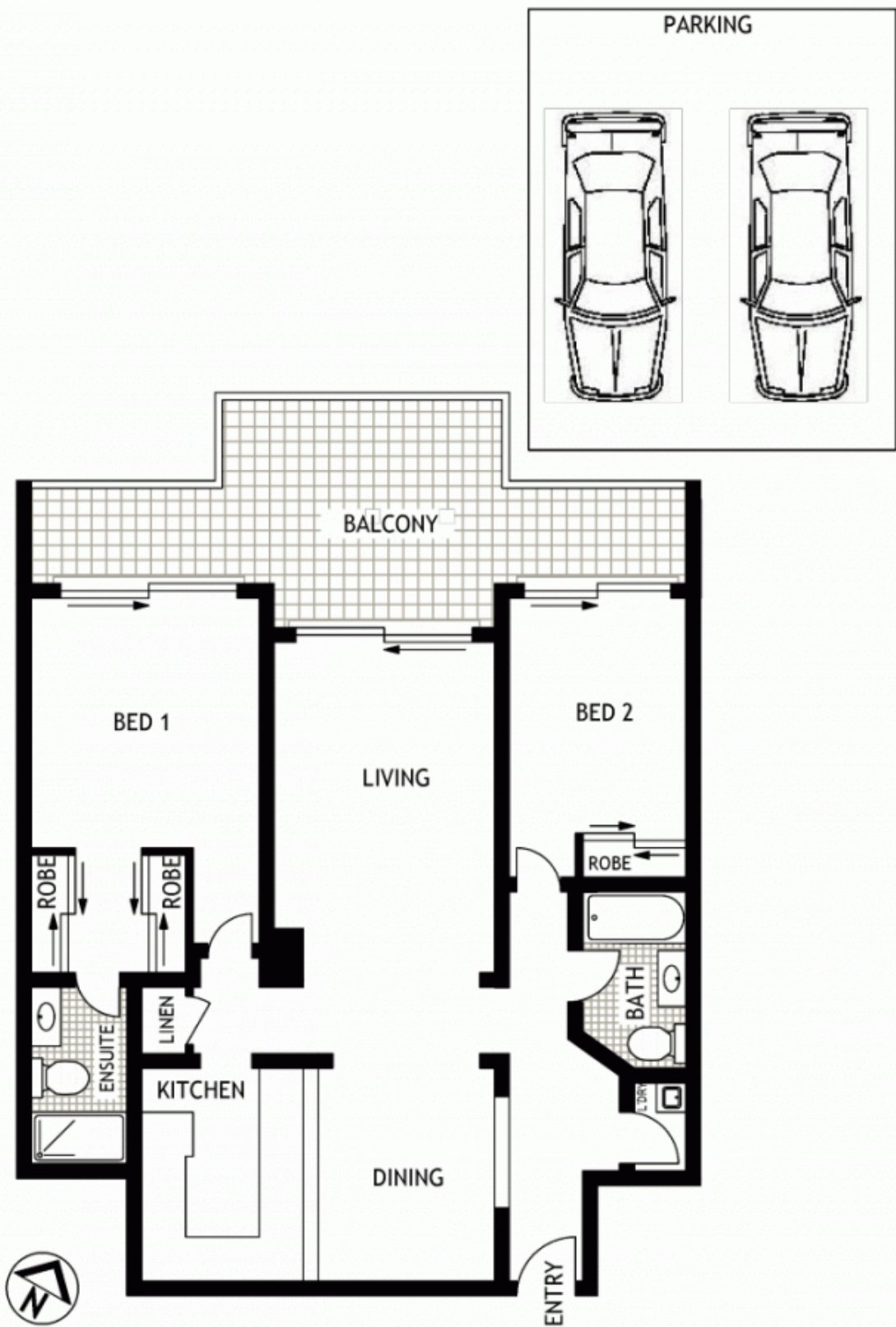
As advertised or by appointment

Agent

Ian Qiu

 0447 696 425

 ian@morton.com.au



501/28 WARAYAMA PLACE

ROZELLE

SCAPE Floor Planing Disclaimer: This floor plan is conceptual only. It is provided for illustrative purposes only and should not be relied upon. We make no guarantees to the correctness of this plan. All interested parties should make and rely on their own enquiries in determining the accuracy of the information contained in this floor plan.