



morton.

PYRMONT 8/56A Pirrama Road

🛏 3 🚿 3 🚗 2

Located literally on Sydney Harbour this as new luxury apartment, set across two levels, will redefine your notion of relaxed but sophisticated city living. The ultra chic address is surrounded by the harbour, enjoys uninterrupted city and Harbour Bridge views and incorporates leading edge design, superb inclusions as well as an ambience of space and luxury.

- Enormous open plan living area with Blackbutt timber floors
- Opens to vast balcony with expansive harbour / city views
- Formal dining opens to additional balcony
- Superbly crafted marble kitchen w/ incredible island bench space
- Miele appliances, dual sinks and wine storage
- King sized master bedroom overlooking the harbour and city
- Fitted 'soft close' wardrobes + stunning Travertine marble ensuite
- Equally spacious 2nd bedroom with built-in wardrobes
- Enormous lower level bedroom with Travertine ensuite
- Ideal teenagers' retreat or guest quarters with separate entry
- Adjacent informal living with access to a 3rd balcony

View

As advertised or by appointment

Agent

James Crow

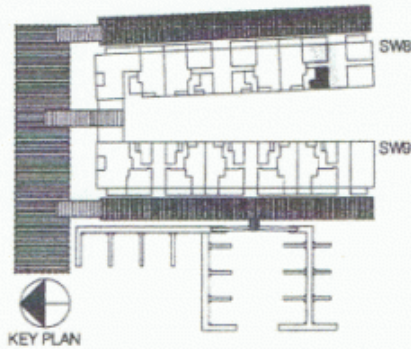
📞 0410 593 057

✉ james@morton.com.au

morton.com.au

SYDNEY WHARF 8

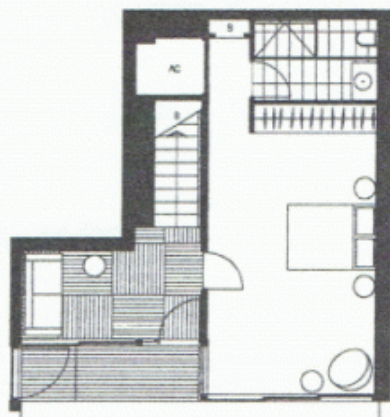
8.1.08



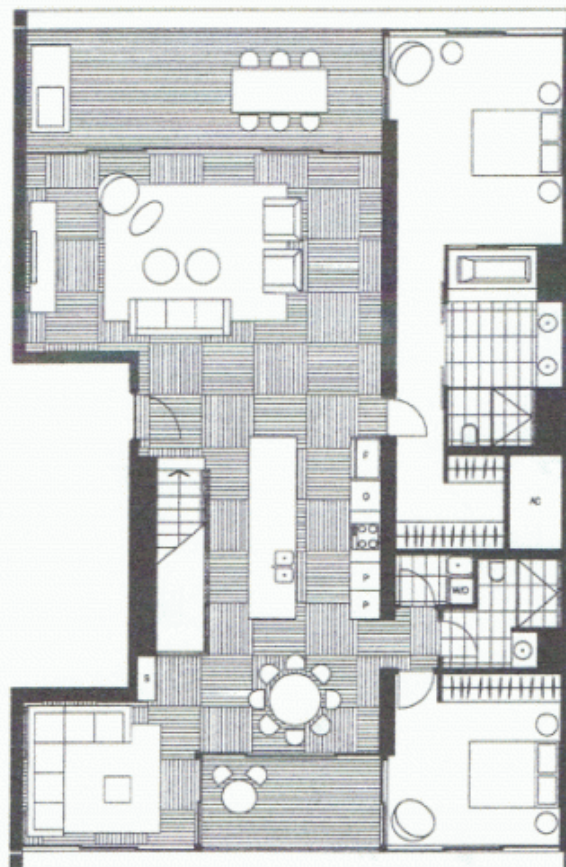
SYDNEY WHARF 8
PYRMONT BAY
3 BEDROOM MEZZANINE

Living	8.2 x 4.6m
Dining	4.0 x 3.1m
Family	3.9 x 3.2m
Bedroom 1	3.8 x 4.8m
Bedroom 2	3.8 x 3.3m
Bedroom 3	3.8 x 6.0m

Note:
- Floor plans are drawn at an unspecified scale.
- Room sizes of Bedrooms are taken to the front face of robe.



LEVEL 1



LEVEL 2

Disclaimer:
This Layout Plan is a guide only and was prepared prior to completion of the project. This information contained herein is believed to be correct, however is not guaranteed. Dimensions are approximate. Changes will undoubtedly occur during the development, dimensions, areas, fittings, fixtures and specifications may be subject to change without notice in accordance with the provisions of the Contract for Sale. Subheads necessary for services are not depicted. The furniture displayed in the Layout Plan is not included in the sale. The position of the furniture should not be taken to indicate the final position of power points, TV connection points and the like. Floor finish setout is indicative only. Prospective purchasers must rely on their own enquiries.